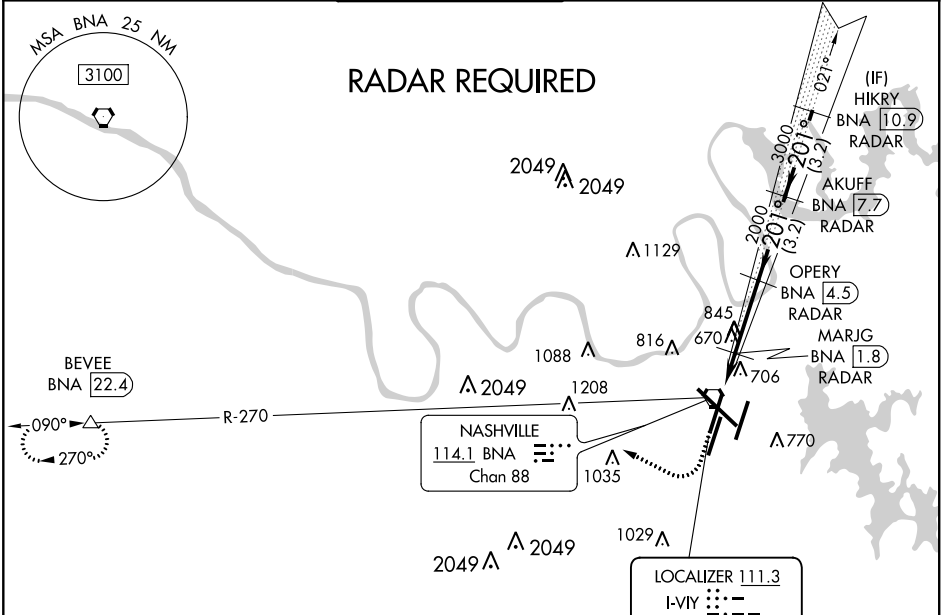


| | | | | |
|---------------------------|------------------------|----------|-------------|-------------|
| LOC I-VIY 111.3 | APP CRS 201° | Rwy Idg | 20R | 20C |
| | | TDZE | 7702 | 8001 |
| | | Apt Elev | 578 | 588 |
| | | | 599 | 599 |

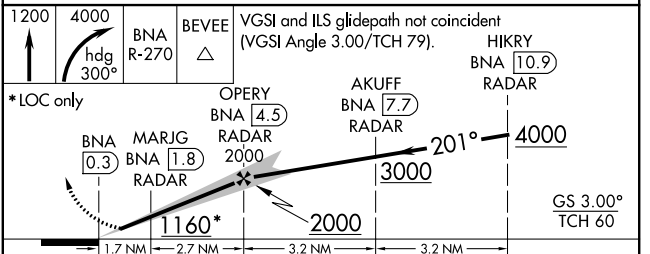
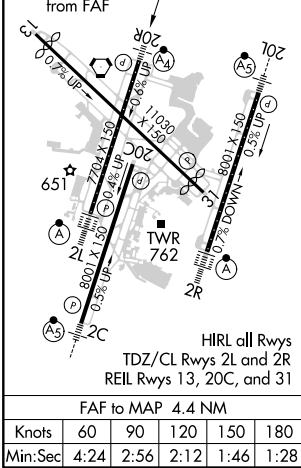
ILS or LOC RWY 20R

NASHVILLE INTL (BNA)

| | | | | | |
|--|--------------|--|---|---------------------------------------|-------------------------------|
| <p>Simultaneous approach authorized with Rwy 20L. DME or radar required. For inop ALS, increase S-LOC 20R Cat D visibility to 1 1/4 SM. DME from BNA VORTAC. Simultaneous reception of I-VIY and BNA DME required.</p> | <p>MALSF</p> | <p>MISSED APPROACH: Climb to 1200 then climbing right turn to 4000 on heading 300° and on BNA VORTAC R-270 to BEVEE/BNA 22.4 DME and hold.</p> | | | |
| | | D-ATIS 135.1 | NASHVILLE APP CON 118.4 360.7 | NASHVILLE TOWER 118.6 257.8 | GND CON 121.9 348.6 |



| | | |
|----------|----------|--------------|
| ELEV 599 | D | TDZE 20C 588 |
| | | TDZE 20R 578 |



| CATEGORY | A | B | C | D |
|--------------|-----------------------|-----------------------|-------------------------------|-------------------------------|
| S-ILS 20R | 778/40 200 (200-3/4) | | | |
| S-LOC 20R | 1000/40 | 422 (500-3/4) | 1000/50 | 422 (500-1) |
| SIDESTEP 20C | 1000-1 | 412 (500-1) | 1000-1 1/2 412 (500-1 1/2) | 1000-2 412 (500-2) |
| CIRCLING | 1100-1 501 (600-1) | 1120-1 521 (600-1) | 1200-1 3/4 601 (700-1 3/4) | 1380-2 1/2 781 (800-2 1/2) |

SE-1, 02 DEC 2021 to 30 DEC 2021

SE-1, 02 DEC 2021 to 30 DEC 2021