

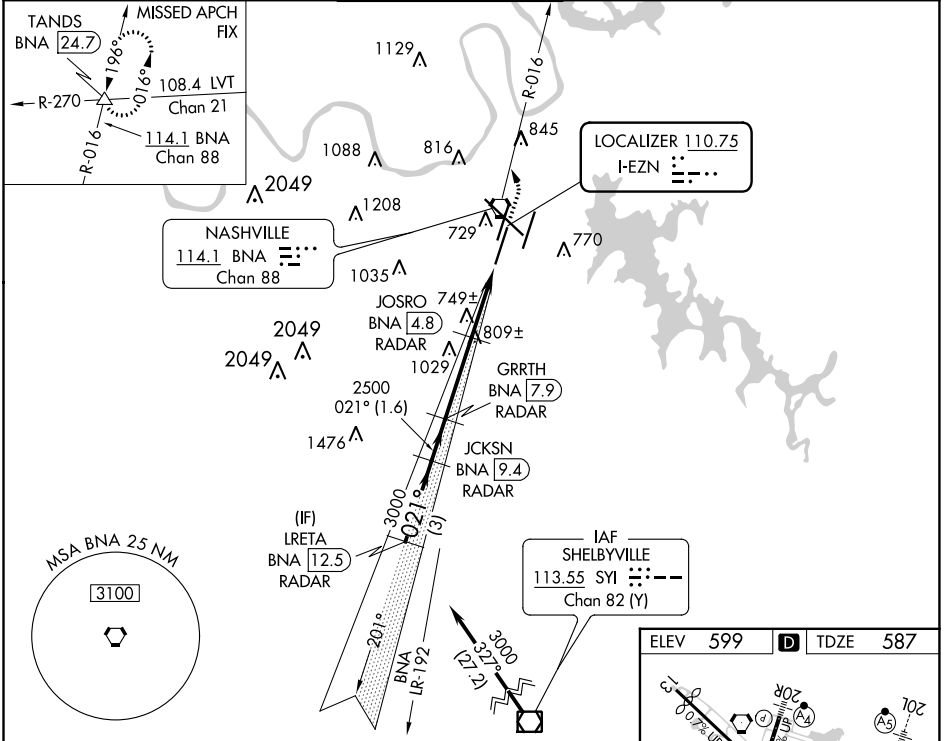
ILS or LOC RWY 2C

NASHVILLE INTL (BNA)

LOC I-EZN 110.75	APP CRS 021°	Rwy Idg TDZE Apt Elev 7601 587 599
----------------------------	------------------------	--

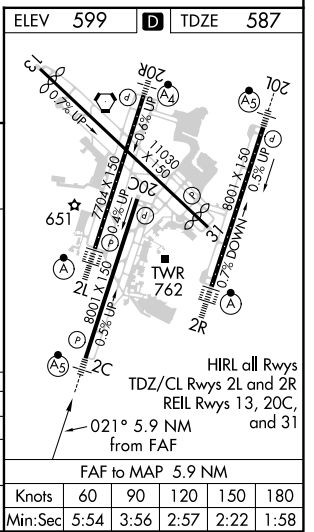
DME or RADAR required.	MALSR 	MISSED APPROACH: Climb to 1300 then climbing left turn to 4000 on BNA VORTAC R-016 to TANDS INT/BNA 24.7 and hold.
<p>▼ Simultaneous approach authorized. For inop ALS, increase S-LOC 2C Cats C and D visibility to RVR 6000. DME from BNA VORTAC.</p> <p>▲ Simultaneous reception of I-EZN and BNA DME required.</p> <p># RVR 1800 authorized with the use of FD or AP or HUD to DA.</p>		

D-ATIS 135.1	NASHVILLE APP CON 118.4 360.7	NASHVILLE TOWER 118.6 257.8	GND CON 121.9 348.6	CLNC DEL 126.05	CPDLC
------------------------	---	---------------------------------------	-------------------------------	---------------------------	-------



VGSI and ILS glidepath not coincident (VGSI Angle 3.00/TCH 64).

LRETA BNA [12.5] RADAR	JCKSN BNA [9.4] RADAR	GRRTH BNA [7.9] RADAR	JOSRO BNA [4.8] RADAR	TANDS △
3000 - 021°			2500	
GS 3.00° TCH 60			*1520	
3 NM			1.6 NM	1.2 NM
CATEGORY	A	B	C	D
S-ILS 2C #	787/24		200 (200-1/2)	
S-LOC 2C	1000/24	413 (500-1/2)	1000/40	413 (500-3/4)
CIRCLING	1100-1 501 (600-1)	1120-1 521 (600-1)	1200-1 3/4 601 (700-1 3/4)	1380-2 1/2 781 (800-2 1/2)



SE-1, 02 DEC 2021 to 30 DEC 2021

SE-1, 02 DEC 2021 to 30 DEC 2021