

LOC I-PNO <b>111.95</b>	APP CRS <b>316°</b>	Rwy Idg TDZE Apt Elev <b>9487</b> <b>578</b> <b>599</b>
----------------------------	------------------------	--

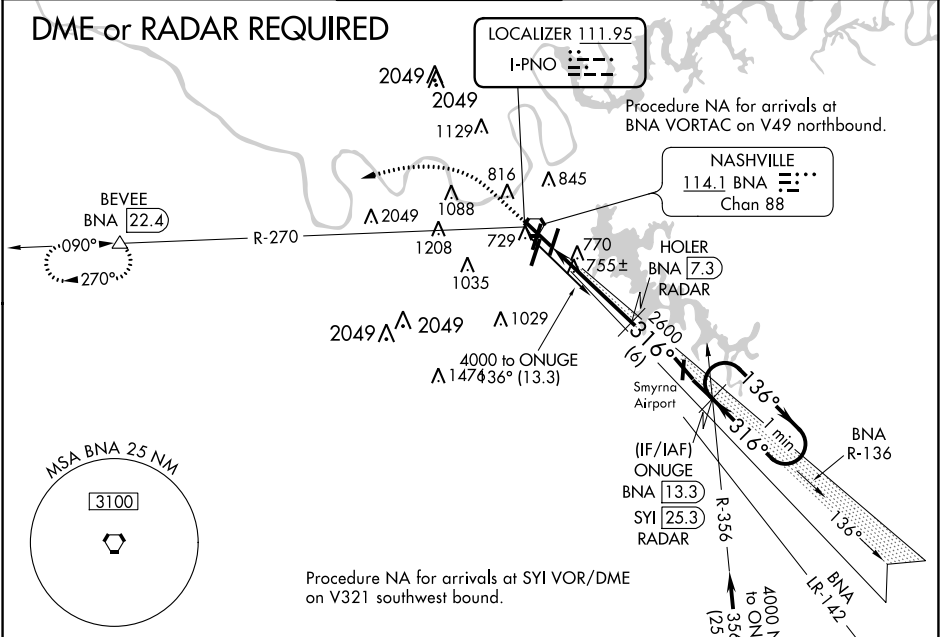
# ILS or LOC RWY 31

NASHVILLE INTL (BNA)

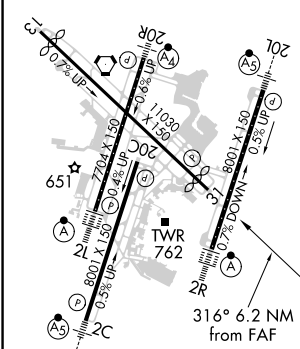
**▼** DME or radar required.  
**▲** DME from BNA VORTAC.  
 Simultaneous reception of I-PNO and BNA DME required.

MISSED APPROACH: Climb to 1400 then climbing left turn to 4000 on BNA VORTAC R-270 to BEVEE/BNA 22.4 DME and hold.

D-ATIS <b>135.1</b>	NASHVILLE APP CON <b>118.4 360.7</b>	NASHVILLE TOWER <b>118.6 257.8</b>	GND CON <b>121.9 348.6</b>	CLNC DEL <b>126.05</b>	CPDLC
------------------------	---	---------------------------------------	-------------------------------	---------------------------	-------



ELEV 599	<b>D</b>	TDZE 578
----------	----------	----------



FAF to MAP 6.2 NM	HIRL all Rwys TDZ/CL Rwys 2L and 2R REIL Rwys 13, 20C, and 31				
Knots	60	90	120	150	180
Min:Sec	6:12	4:08	3:06	2:29	2:04
<b>C</b> CIRCLING	1100-1 501 (600-1)	1120-1 521 (600-1)	1200-1 <sup>3</sup> / <sub>4</sub> 601 (700-1 <sup>3</sup> / <sub>4</sub> )	1380-2 <sup>1</sup> / <sub>2</sub> 781 (800-2 <sup>1</sup> / <sub>2</sub> )	

SE-1, 02 DEC 2021 to 30 DEC 2021

SE-1, 02 DEC 2021 to 30 DEC 2021