

| | | |
|-------------|----------|-------------|
| APP CRS | Rwy Idg | 8000 |
| 021° | TDZE | 590 |
| | Apt Elev | 599 |

RNAV (RNP) Z RWY 2R

NASHVILLE INTL (BNA)

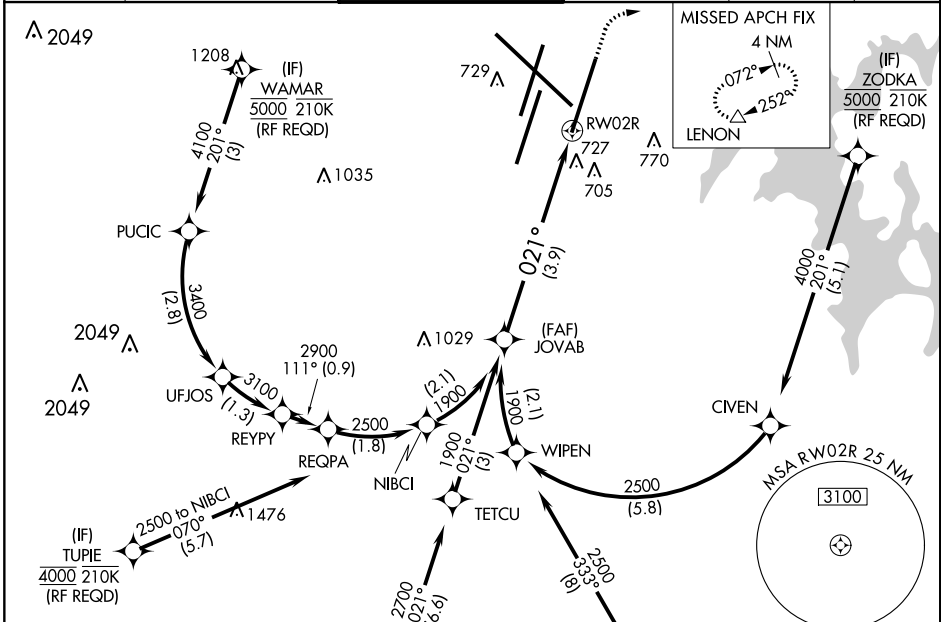
RNP AR APCH.

For uncompensated Baro-VNAV systems, procedure NA below -11°C or above 54°C.
 For inoperative ALSF-2, increase RNP 0.15 all Cats visibility to RVR 5600, RNP 0.30 all Cats visibility to 1 3/8 mile. Simultaneous approach authorized with Rwy 2L/C. Use of FD or AP providing RNAV track guidance required during simultaneous operations.

ALSF-2

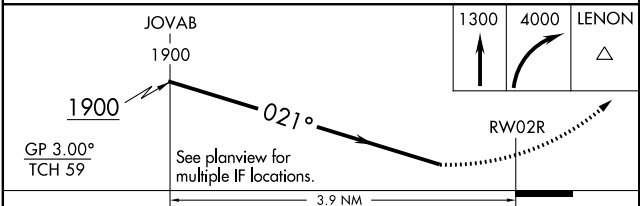
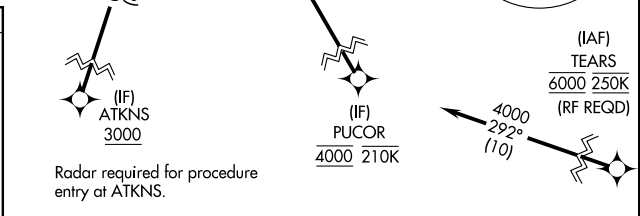
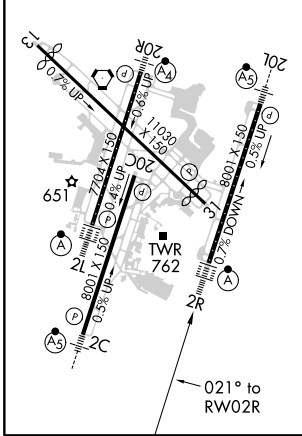
MISSED APPROACH:
 Climb to 1300 then climbing right turn to 4000 direct LENON and hold.

| | | | | | |
|--------------|--------------------|--------------------|--------------------|---------------|-------|
| D-ATIS | NASHVILLE APP CON | NASHVILLE TOWER | GND CON | CLNC DEL | CPDLC |
| 135.1 | 118.4 360.7 | 118.6 257.8 | 121.9 348.6 | 126.05 | |



| | | |
|----------|----------|----------|
| ELEV 599 | D | TDZE 590 |
|----------|----------|----------|

HIRL all Rwys
 TDZ/CL Rwys 2L and 2R
 REIL Rwys 13, 20C, and 31



| CATEGORY | A | B | C | D |
|-------------|---|---------|---------------|---|
| RNP 0.15 DA | | 938/40 | 348 (400-3/4) | |
| RNP 0.30 DA | | 1024/48 | 434 (500-1) | |

AUTHORIZATION REQUIRED

SE-1, 02 DEC 2021 to 30 DEC 2021

SE-1, 02 DEC 2021 to 30 DEC 2021