

APP CRS	Rwy Idg	<b>9487</b>
<b>316°</b>	TDZE	<b>578</b>
	Apt Elev	<b>599</b>

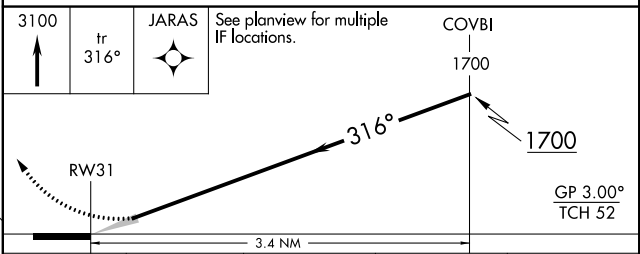
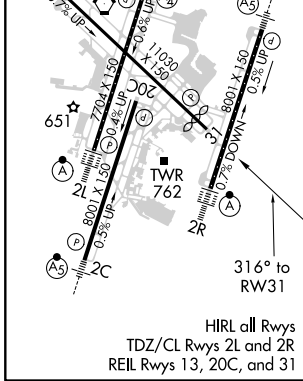
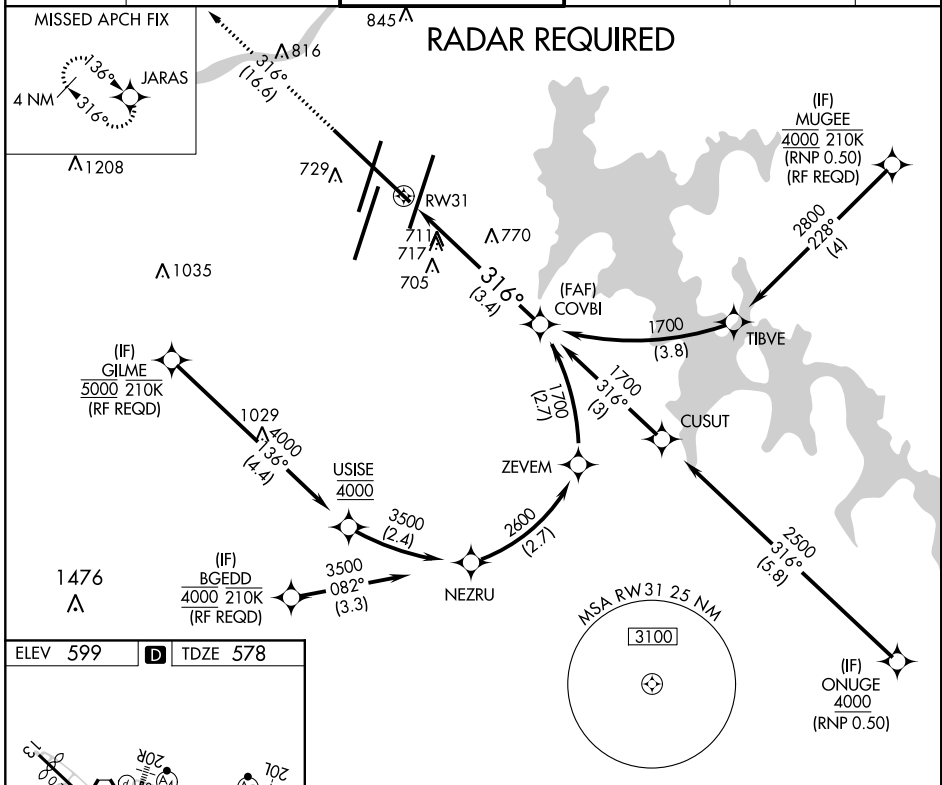
# RNAV (RNP) Z RWY 31

NASHVILLE INTL (BNA)

**▽** For uncompensated Baro-VNAV systems, procedure NA below -16°C (4°F) or above 54°C (130°F). GPS required.

MISSED APPROACH: Climb to 3100 on track 316° to JARAS and hold.

D-ATIS	NASHVILLE APP CON	NASHVILLE TOWER	GND CON	CLNC DEL	CPDLC
<b>135.1</b>	<b>118.4 360.7</b>	<b>118.6 257.8</b>	<b>121.9 348.6</b>	<b>126.05</b>	



CATEGORY	A	B	C	D
RNP 0.25 DA		1025-1½	447 (500-1½)	
RNP 0.30 DA		1099-1¾	521 (600-1¾)	

**AUTHORIZATION REQUIRED**

SE-1, 02 DEC 2021 to 30 DEC 2021

SE-1, 02 DEC 2021 to 30 DEC 2021