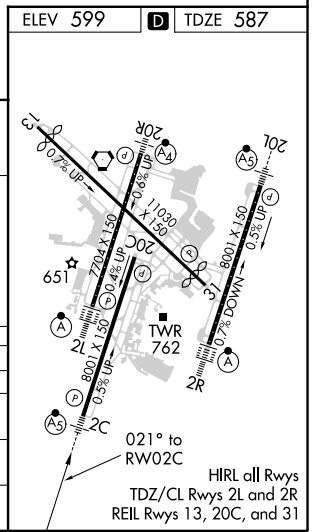
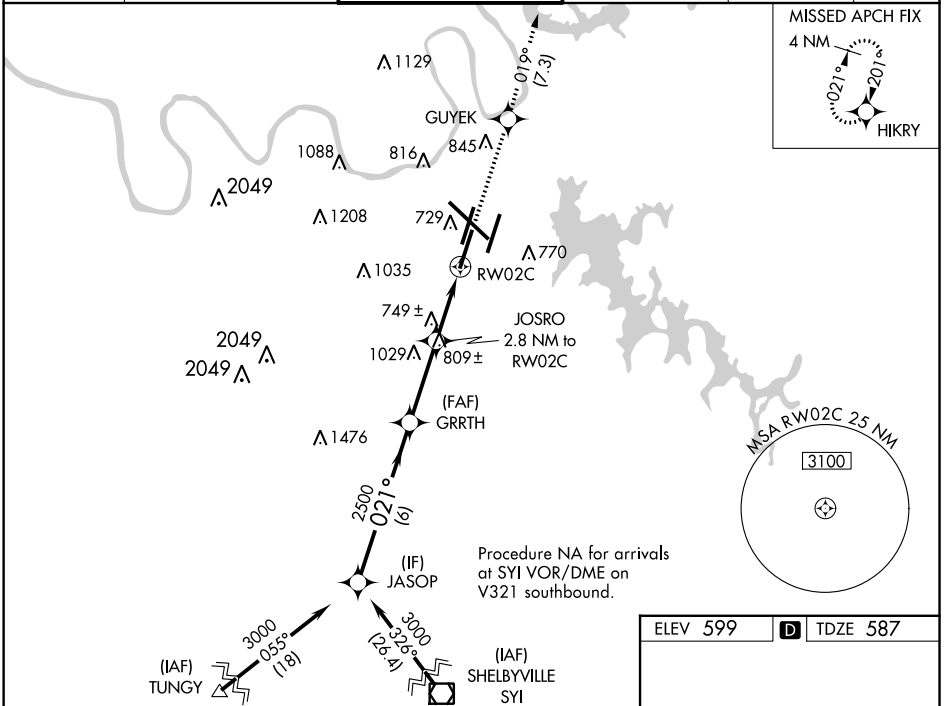


WAAS CH <b>70613</b> <b>W02B</b>	APP CRS <b>021°</b>	Rwy Idg TDZE Apt Elev	<b>7601</b> <b>587</b> <b>599</b>
--	------------------------	-----------------------------	---

# RNAV (GPS) Y RWY 2C

NASHVILLE INTL (BNA)

RNP APCH - GPS		NASHVILLE TOWER <b>118.6 257.8</b>		GND CON <b>121.9 348.6</b>	CLNC DEL <b>126.05</b>	CPDLC
<p>▼ For uncompensated Baro-VNAV systems, LNAV/VNAV NA below -11°C or above 54°C. Use of FD or AP providing RNAV track guidance required during simultaneous operations. LNAV procedure NA during simultaneous operations. Simultaneous approach authorized with Rwy 2R.                  ▲ ** RVR 1800 authorized with use of FD or AP or HUD to DA.</p>		MALSR		MISSED APPROACH: Climb to 4000 direct GUYEK and on track 019° to HIKRY and hold, continue climb-in-hold to 4000.		



VGSi and ILS glidepath not coincident (VGSi Angle 3.00/TCH 64).		4000	GUYEK	tr 19°	HIKRY
JASOP	GRRTH	JOSRO	*LNAV only		
3000	2500	2.8 NM to RW02C	*1.2 NM to RW02C		
GP 3.00° TCH 60		*1520			
	6 NM	3.1 NM	1.6 NM	1.2 NM	
CATEGORY	A	B	C	D	
LPV DA**	787/24		200 (200-1/2)		
LNAV/VNAV DA	1059/60		472 (500-1/4)		
LNAV MDA	1000/24	413 (500-1/2)	1000/40	413 (500-3/4)	
CIRCLING	1100-1 501 (600-1)	1120-1 521 (600-1)	1200-1 3/4 601 (700-1 3/4)	1380-2 1/2 781 (800-2 1/2)	

SE-1, 02 DEC 2021 to 30 DEC 2021

SE-1, 02 DEC 2021 to 30 DEC 2021