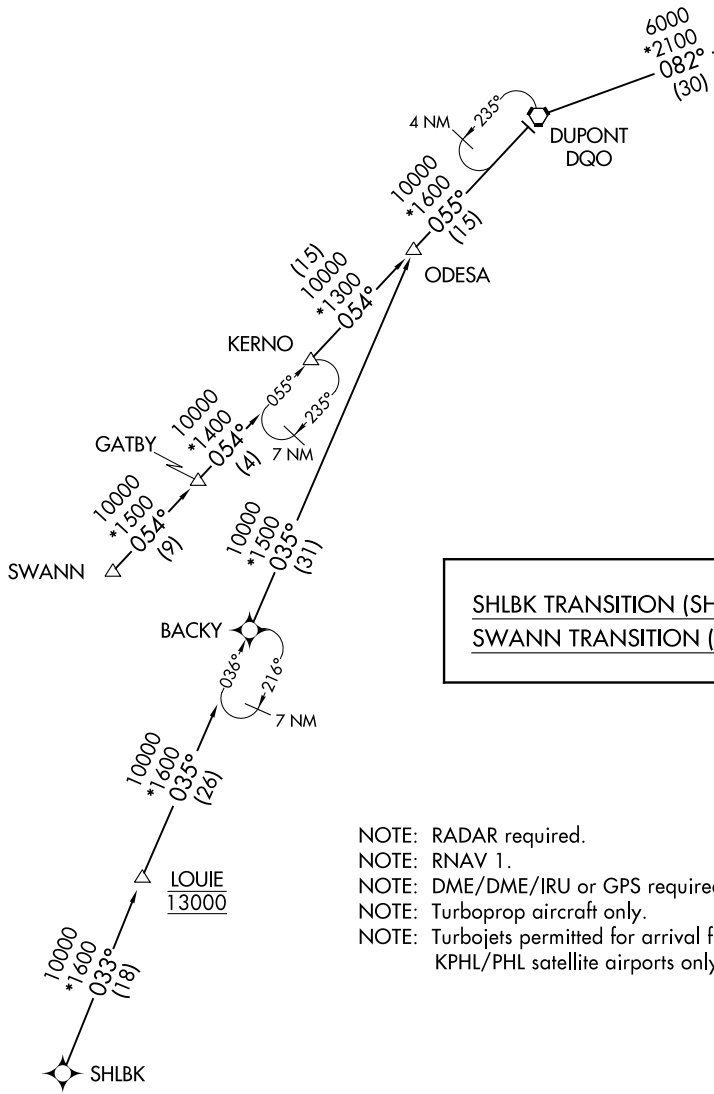


APPLE ONE ARRIVAL (RNAV) Transition Routes

PHILADELPHIA APP CON
119.75 269.25
POTOMAC APP CON
124.55 317.425
NEW YORK APP CON
127.3 263.0
D-ATIS ARR
125.95

See following page
for Arrival Route.
4 NM
262°
RUUTH



SHLBK TRANSITION (SHLBK.APPLE1):
SWANN TRANSITION (SWANN.APPLE1):

- NOTE: RADAR required.
- NOTE: RNAV 1.
- NOTE: DME/DME/IRU or GPS required.
- NOTE: Turboprop aircraft only.
- NOTE: Turbojets permitted for arrival from KPHL/PHL satellite airports only.

NOTE: Chart not to scale.

NE-2, 02 DEC 2021 to 30 DEC 2021

NE-2, 02 DEC 2021 to 30 DEC 2021