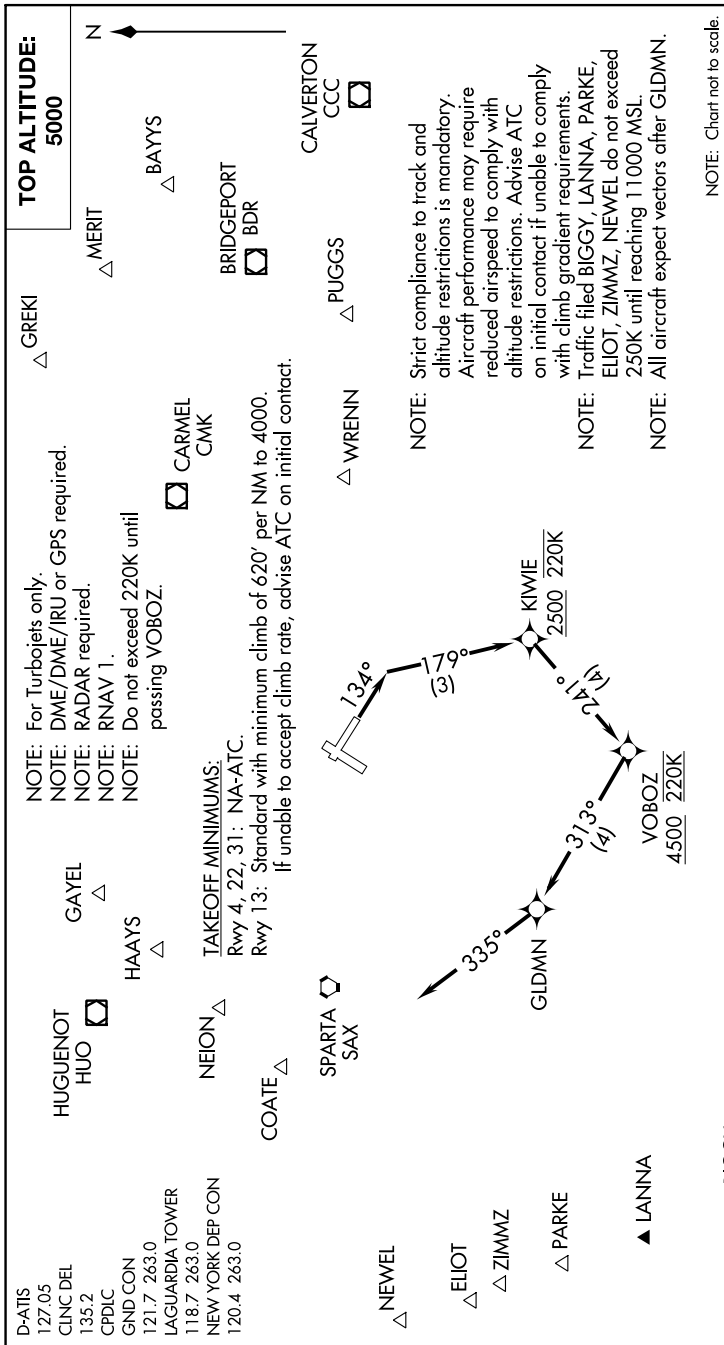


# GLDMN SEVEN DEPARTURE (RNAV)

NE-2, 02 DEC 2021 to 30 DEC 2021



**DEPARTURE ROUTE DESCRIPTION**

**TAKEOFF RUNWAY 13:** Climb on heading 134° to intercept course 179° to cross KIWIE at or above 2500 and at or below 220K, then on track 241° to cross VOBOZ at or above 4500 and at 220K, then on track 313° to GLDMN, then on track 335° for RADAR vector on course. Maintain 5000 or as assigned by ATC. Expect clearance to filed altitude/flight level 10 minutes after departure.

NE-2, 02 DEC 2021 to 30 DEC 2021

# GLDMN SEVEN DEPARTURE (RNAV)