

LOC/DME I-GDI <b>108.5</b> Chan <b>22</b>	APP CRS <b>134°</b>	Rwy Idg TDZE <b>12</b> Apt Elev <b>21</b>	<b>7003</b>
---	------------------------	---	-------------

# ILS or LOC RWY 13

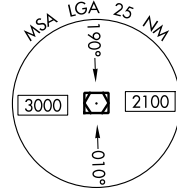
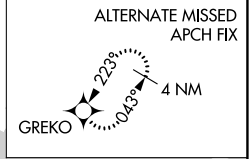
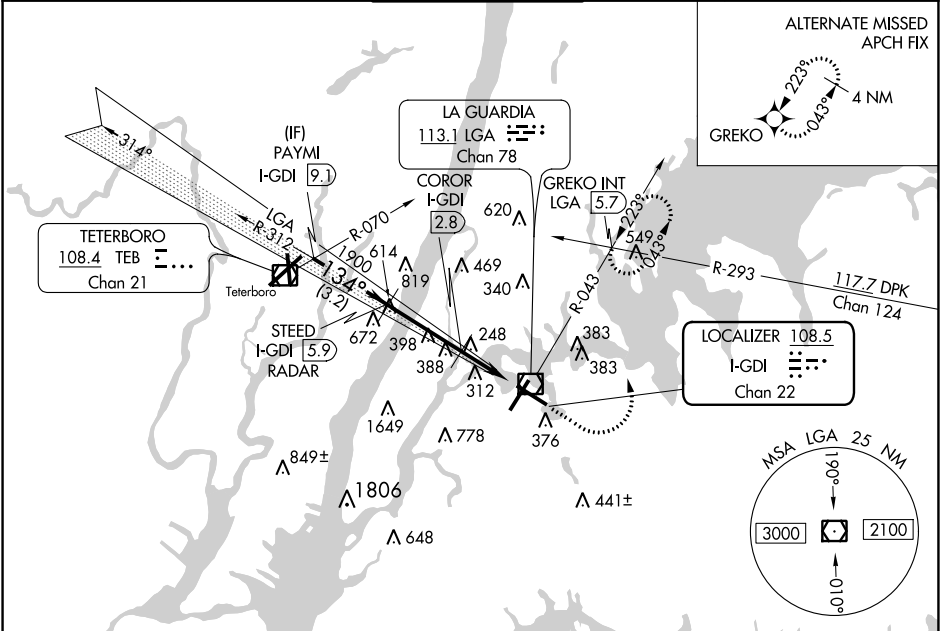
LAGUARDIA (LGA)

Radar required for procedure entry. DME or RADAR required for LOC only.

**⚠** For inop ALS, increase S-LOC 13 Cats C/D visibility to 2½ SM.

**⚠** MISSED APPROACH: Climb to 800 then climbing left turn to 2000 on LGA VOR/DME R-043 to GREKO INT/LGA 5.7 DME and hold, continue climb-in-hold to 2000.

D-ATIS ARR <b>125.95</b> D-ATIS DEP <b>127.05</b>	NEW YORK APP CON <b>120.8 263.0</b>	LAGUARDIA TOWER <b>118.7 263.0</b>	GND CON <b>121.7 263.0</b>	CLNC DEL <b>135.2</b>	CPDLC
--	--	---------------------------------------	-------------------------------	--------------------------	-------



NE-2, 02 DEC 2021 to 30 DEC 2021

NE-2, 02 DEC 2021 to 30 DEC 2021

VGSi and ILS glidepath not coincident (VGSi Angle 3.10/TCH 55).					ELEV 21	TDZE 12
CATEGORY	A	B	C	D		
S-ILS 13	212/18				200 (200-½)	
S-LOC 13	800/24 788 (800-½)	800/40 788 (800-¾)	800-1¼	788 (800-1¼)		
<b>C</b> CIRCLING	800-1 779 (800-1)	800-1¼ 779 (800-1¼)	1080-3 1059 (1100-3)	1260-3 1239 (1300-3)		
COROR FIX MINIMUMS						
S-LOC 13	500/24	488 (500-½)	500/50	488 (500-1)		
<b>C</b> CIRCLING	700-1	679 (700-1)	1080-3 1059 (1100-3)	1260-3 1239 (1300-3)		
FAF to MAP 5.5 NM						
Knots	60	90	120	150	180	
Min:Sec	5:30	3:40	2:45	2:12	1:50	