

# ILS or LOC RWY 22

LAGUARDIA (LGA)

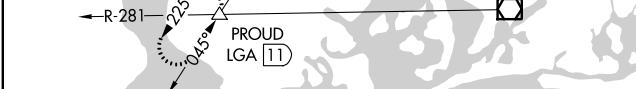
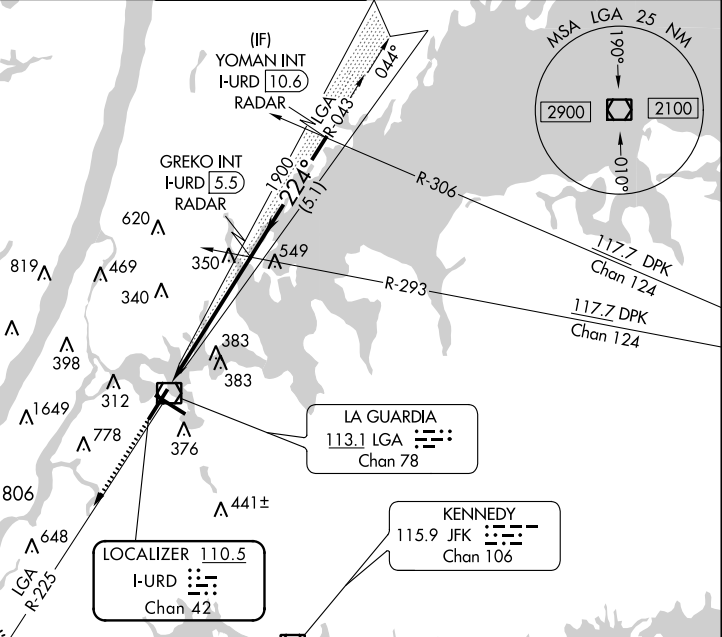
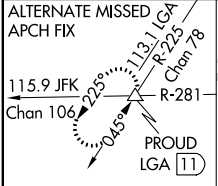
LOC/DME I-URD <b>110.5</b> Chan <b>42</b>	APP CRS <b>224°</b>	Rwy Idg TDZE <b>12</b> Apt Elev <b>21</b>	<b>7001</b>
---	------------------------	---	-------------

RADAR required for procedure entry. RADAR or DME required for LOC only.

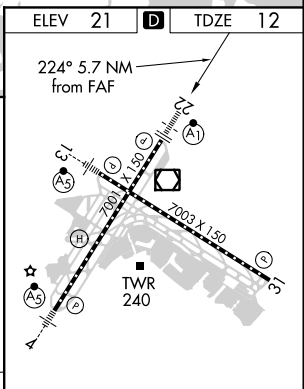


MISSED APPROACH: Climb to 3000 on LGA VOR/DME R-225 to PROUD INT/LGA 1.1 DME and hold, continue climb-in-hold to 3000.

D-ATIS ARR <b>125.95</b>	NEW YORK APP CON	LAGUARDIA TOWER	GND CON	CLNC DEL	CPDLC
D-ATIS DEP <b>127.05</b>	<b>120.8 263.0</b>	<b>118.7 263.0</b>	<b>121.7 263.0</b>	<b>135.2</b>	



3000	PROUD	VGSI and ILS glidepath not coincident (VGSI Angle 3.00/TCH 67).
LGA R-225	△	
* LOC only		
I-URD DME ANTENNA	I-URD	
I-URD	* I-URD	
0.2	1.5	
1.6 NM	4.1 NM	5.1 NM
		3000
		1900
		224°
		GS 3.00°
		TCH 52



CATEGORY	A	B	C	D
S-ILS 22	212/18		200 (200-½)	
S-LOC 22	600/24 588 (600-½)		600-1¼ 588 (600-1¼)	
CIRCLING	700-1 679 (700-1)		1080-3 1260-3 1059 (1100-3) 1239 (1300-3)	

ELEV 21	TDZE 12				
224° 5.7 NM from FAF					
700 X 150	700 X 150				
TWR 240					
TDZ/CL Rwy 4, 13 and 22					
HIRL Rwy 4-22 and 13-31					
REIL Rwy 31					
FAF to MAP 5.7 NM					
Knots	60	90	120	150	180
Min:Sec	5:42	3:48	2:51	2:17	1:54

# LAGUARDIA (LGA)

## ILS or LOC RWY 22

NE-2, 02 DEC 2021 to 30 DEC 2021

NE-2, 02 DEC 2021 to 30 DEC 2021