

| | | | |
|---|------------------------|---|-------------|
| LOC/DME I-LGA 110.5 Chan 42 | APP CRS 044° | Rwy Idg TDZE 21 Apt Elev 21 | 7001 |
|---|------------------------|---|-------------|

ILS or LOC RWY 4

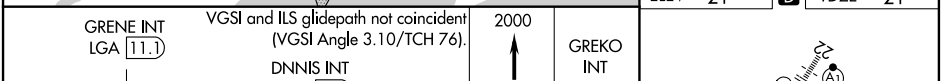
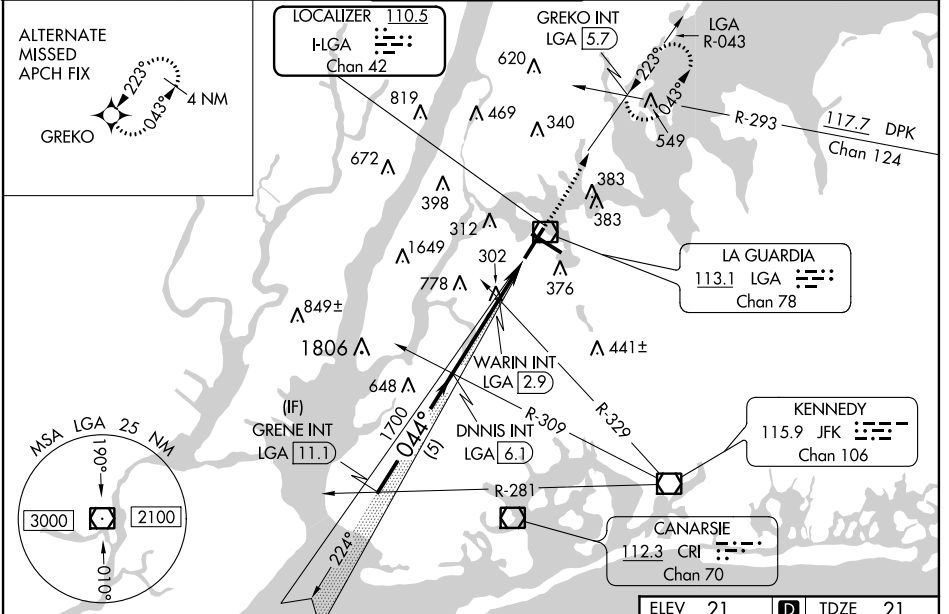
LAGUARDIA (LGA)

RADAR required for procedure entry.

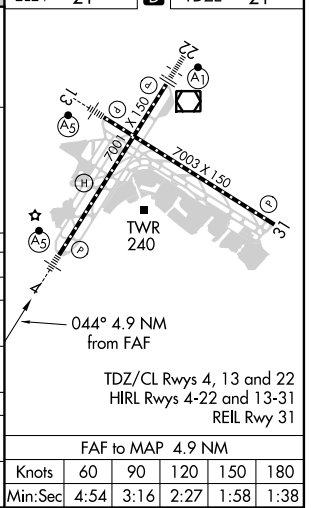
▼ Rwy 4 helicopter visibility reduction below RVR 5000 NA. For inop ALS increase S-ILS 4 all Cats visibility to RVR 4500. Inop table does not apply to S-LOC 4 Cats A and B and WARIN fix minimums S-LOC 4 Cats A and B. Going below glidepath may not provide obstacle clearance inside DA. Crossing Rwy threshold below charted TCH may not provide required visual area obstacle clearance. DME from LGA VOR/DME. Autopilot coupled approach NA.

⚠ MISSED APPROACH: Climb to 2000 on LGA VOR/DME R-043 to GREKO INT/LGA 5.7 DME and hold, continue climb-in-hold to 2000.

| | | | | | |
|--|--|---------------------------------------|-------------------------------|--------------------------|-------|
| D-ATIS ARR 125.95 D-ATIS DEP 127.05 | NEW YORK APP CON 120.8 263.0 | LAGUARDIA TOWER 118.7 263.0 | GND CON 121.7 263.0 | CLNC DEL 135.2 | CPDLC |
|--|--|---------------------------------------|-------------------------------|--------------------------|-------|



| | | | | |
|---|--------------------|-------------|-------------------------|-------------------------|
| CATEGORY | A | B | C | D |
| S-ILS 4 | 305/40 284 (300-¾) | | | |
| S-LOC 4 | 640/50 | 619 (700-1) | 640-1⅓ | 619 (700-1⅓) |
| ⓐ CIRCLING | 700-1 | 679 (700-1) | 1080-3 1059 (1100-3) | 1260-3 1239 (1300-3) |
| WARIN FIX MINIMUMS (DUAL VOR RECEIVERS OR DME REQUIRED) | | | | |
| S-LOC 4 | 560/50 | 539 (600-1) | 560/55 | 539 (600-1) |
| ⓐ CIRCLING | 700-1 | 679 (700-1) | 1080-3 1059 (1100-3) | 1260-3 1239 (1300-3) |



NE-2, 02 DEC 2021 to 30 DEC 2021

NE-2, 02 DEC 2021 to 30 DEC 2021