

LOC/DME I-TKD <b>111.15</b> Chan 48 (Y)	APP CRS <b>234°</b>	Rwy Idg TDZE Apt Elev	<b>N/A</b> <b>21</b>
---	------------------------	--------------------------	-------------------------

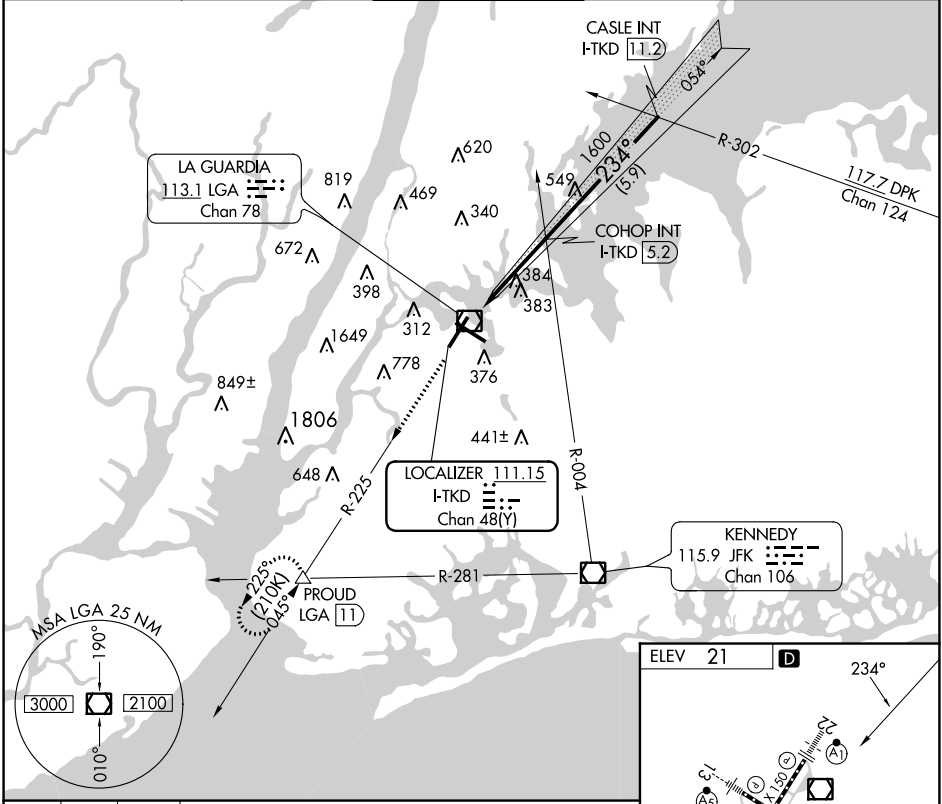
# LDA-A

LAGUARDIA (LGA)

RADAR required for procedure entry.  
 Auto pilot coupled approach NA.

MISSED APPROACH: Climb to 3000 on LGA VOR/DME R-225 to PROUD INT and hold, continue climb-in-hold to 3000.

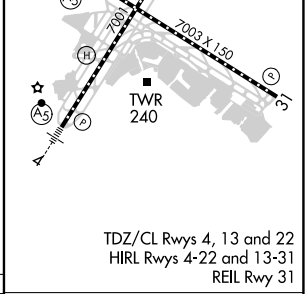
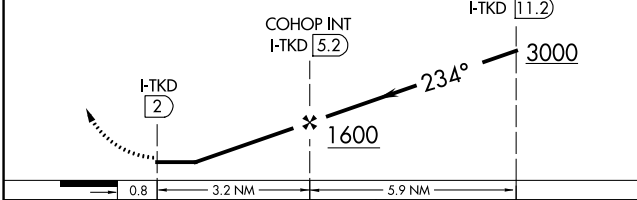
D-ATIS ARR <b>125.95</b> D-ATIS DEP <b>127.05</b>	NEW YORK APP CON <b>120.8 263.0</b>	LAGUARDIA TOWER <b>118.7 263.0</b>	GND CON <b>121.7 263.0</b>	CLNC DEL <b>135.2</b>	CPDLC
--	--	---------------------------------------	-------------------------------	--------------------------	-------



NE-2, 02 DEC 2021 to 30 DEC 2021

NE-2, 02 DEC 2021 to 30 DEC 2021

3000	LGA R-225	PROUD
------	-----------	-------



CATEGORY	A	B	C	D	FAF to MAP 3.2 NM					
CIRCLING	700-1	679 (700-1)	1080-3	1260-3	Knots	60	90	120	150	180
			1059 (1100-3)	1239 (1300-3)	Min:Sec	3:12	2:08	1:36	1:17	1:04