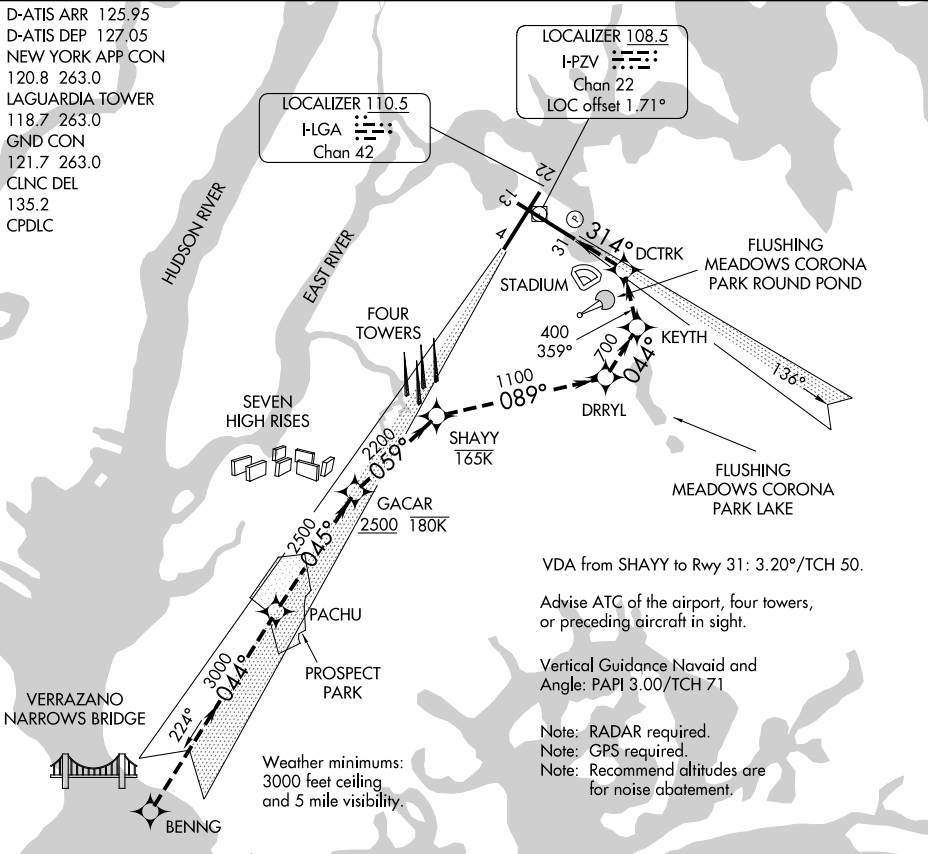


PARK VISUAL RWY 31

D-ATIS ARR 125.95
 D-ATIS DEP 127.05
 NEW YORK APP CON
 120.8 263.0
 LAGUARDIA TOWER
 118.7 263.0
 GND CON
 121.7 263.0
 CLNC DEL
 135.2
 CPDLC



NE-2, 02 DEC 2021 to 30 DEC 2021

NE-2, 02 DEC 2021 to 30 DEC 2021

1 NM	2	3	4	5	6	7	8	9	10	11	12	13	14	15	16
------	---	---	---	---	---	---	---	---	----	----	----	----	----	----	----

PARK VISUAL RWY 31 APPROACH

When cleared for the PARK VISUAL aircraft may proceed via the (Special RNAV (GPS) X Rwy 31) approach to Rwy 31 and/or cross GACAR at or below 180K (Seven Towers) at 2500 or above and turn right tracking 059° to SHAYY at or below 165K (Four Towers) then turn right tracking 089° to DRRYL (Flushing Meadows Corona Park Lake) then turn left tracking 044° to KEYTH (Flushing Meadows Corona Park Round Pond) then left turn tracking 359° to DCTRK (stadium) then left turn direct RWY 31.

PARK VISUAL RWY 31

40°47'N-73°52'W

NEW YORK, NEW YORK
LAGUARDIA (LGA)