

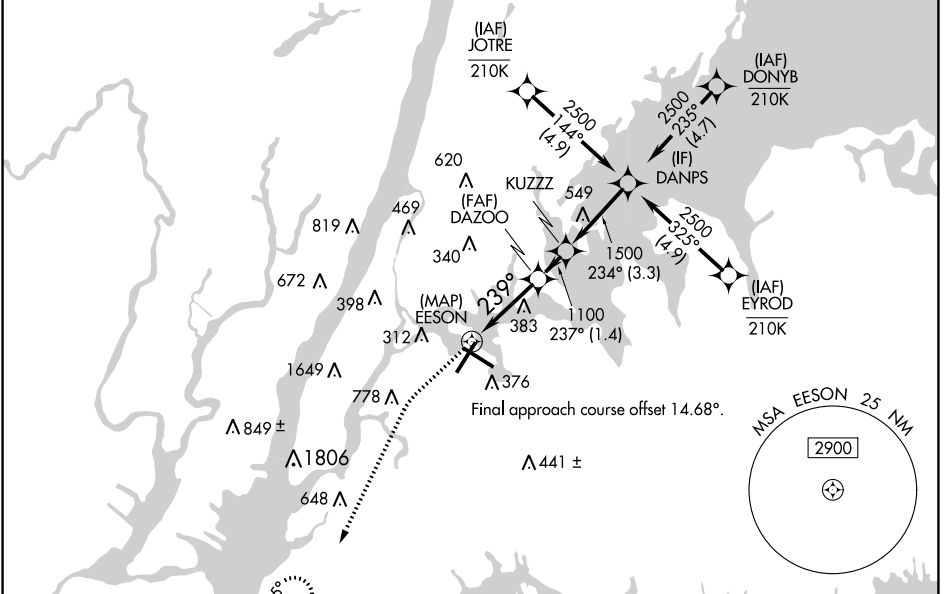
APP CRS	Rwy Idg	<b>7001</b>
<b>239°</b>	TDZE	<b>12</b>
	Apt Elev	<b>21</b>

# RNAV (GPS) X RWY 22

LAGUARDIA (LGA)

RNP APCH - GPS.	ALSF-1 	MISSED APPROACH: Climb to 500 then climbing left turn to 3000 direct PROUD and hold, continue climb-in-hold to 3000.
Circling NA southwest of Rwy 13-31. For uncompensated Baro-VNAV systems, LNAV/VNAV NA below -11°C or above 54°C. For inop ALS, increase LNAV/VNAV all Cats visibility to RVR 5500; increase LNAV Cats C/D visibility to 1¼ SM.		

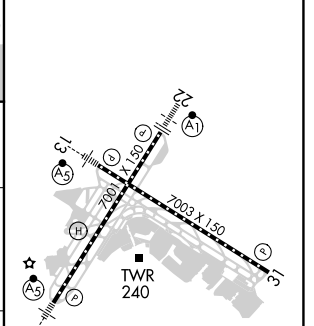
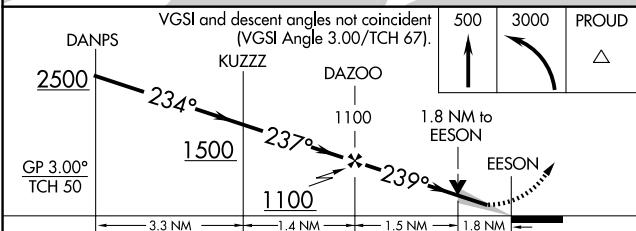
D-ATIS ARR <b>125.95</b>	NEW YORK APP CON	LAGUARDIA TOWER	GND CON	CLNC DEL	CPDLC
D-ATIS DEP <b>127.05</b>	<b>120.8 263.0</b>	<b>118.7 263.0</b>	<b>121.7 263.0</b>	<b>135.2</b>	



NE-2, 02 DEC 2021 to 30 DEC 2021

NE-2, 02 DEC 2021 to 30 DEC 2021

ELEV 21	<b>D</b> TDZE 12
---------	------------------



CATEGORY	A	B	C	D
LNAV/VNAV DA		381/35	369 (400-%)	
LNAV MDA	640/24	628 (700-½)	640-1¾	628 (700-1¾)
<b>C</b> CIRCLING	640-1	619 (700-1)	700-2 679 (700-2)	760-2¼ 739 (800-2¼)

TDZ/CL Rws 4, 13 and 22  
 HIRL Rws 4-22 and 13-31  
 REIL Rwy 31