

WAAS CH <b>48928</b> <b>W31A</b>	APP CRS <b>314°</b>	Rwy Idg TDZE Apt Elev	<b>7003</b> <b>7</b> <b>21</b>
--	------------------------	-----------------------------	--------------------------------------

# RNAV (GPS) Z RWY 31

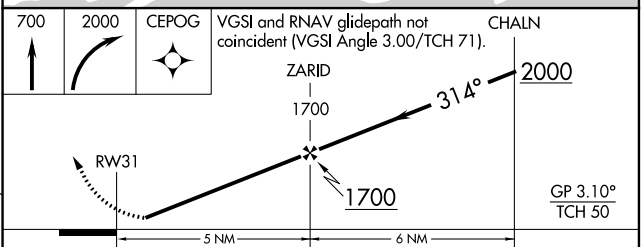
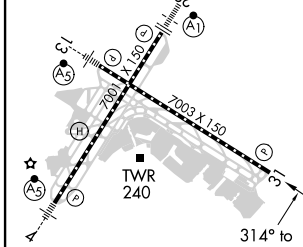
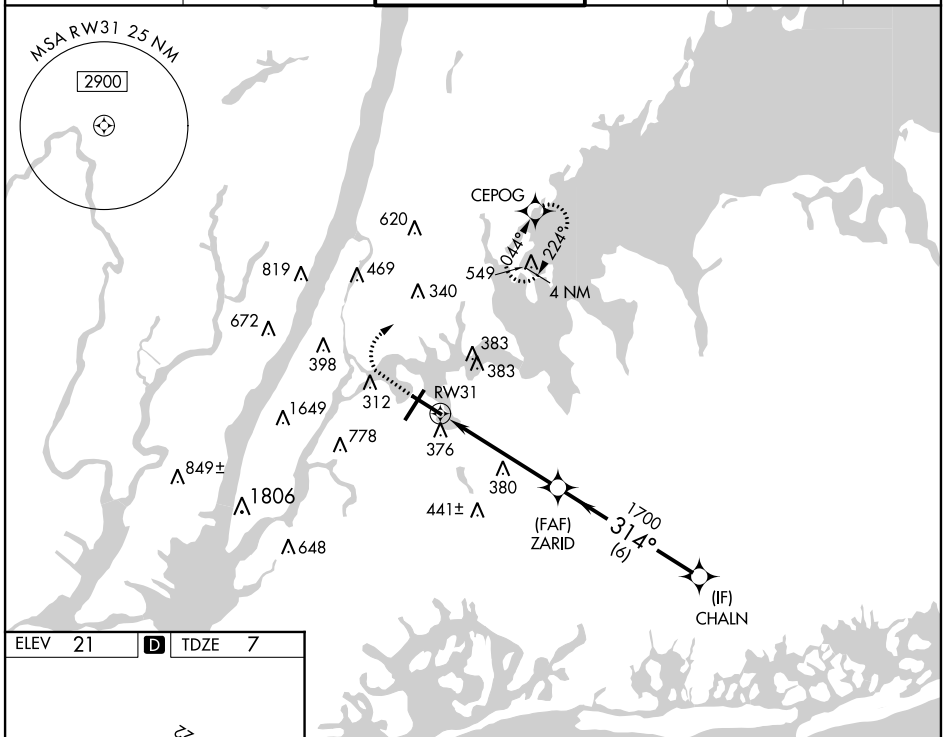
LAGUARDIA (LGA)

RNP APCH.

**▼** Helicopter visibility reduction below 1 SM NA. For uncompensated Baro-VNAV systems, LNAV/VNAV NA below -12°C or above 48°C. Circling NA for Cat D northwest of Rwy 4 and southwest of Rwy 13.

MISSED APPROACH: (Do not exceed 220K until CEPOG) Climb to 700 then climbing right turn to 2000 direct CEPOG and hold.

D-ATIS ARR <b>125.95</b>	NEW YORK APP CON <b>120.8 263.0</b>	LAGUARDIA TOWER <b>118.7 263.0</b>	GND CON <b>121.7 263.0</b>	CLNC DEL <b>135.2</b>	CPDLC
D-ATIS DEP <b>127.05</b>					



CATEGORY	A	B	C	D
LPV DA		330/50	323 (400-1)	
LNAV/VNAV DA		618-1¼	611 (600-1¼)	
LNAV MDA	640/55	633 (700-1)	640-1¼	633 (700-1¼)
<b>C</b> CIRCLING	700-1	679 (700-1)	1080-3 1059 (1100-3)	1260-3 1239 (1300-3)

TDZ/CL Rwy 4, 13 and 22  
HIRL Rwy 4-22 and 13-31  
REIL Rwy 31

NE-2, 02 DEC 2021 to 30 DEC 2021

NE-2, 02 DEC 2021 to 30 DEC 2021