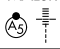


VOR/DME LGA 113.1 Chan 78	APP CRS 046°	Rwy Idg TDZE Apt Elev	7001 21 21
---	------------------------	-----------------------------	---------------------------------------

VOR RWY 4

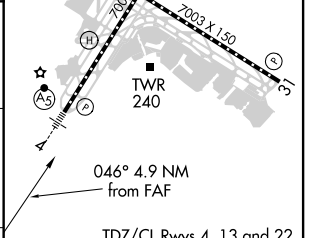
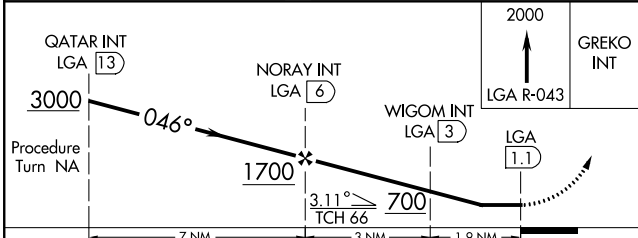
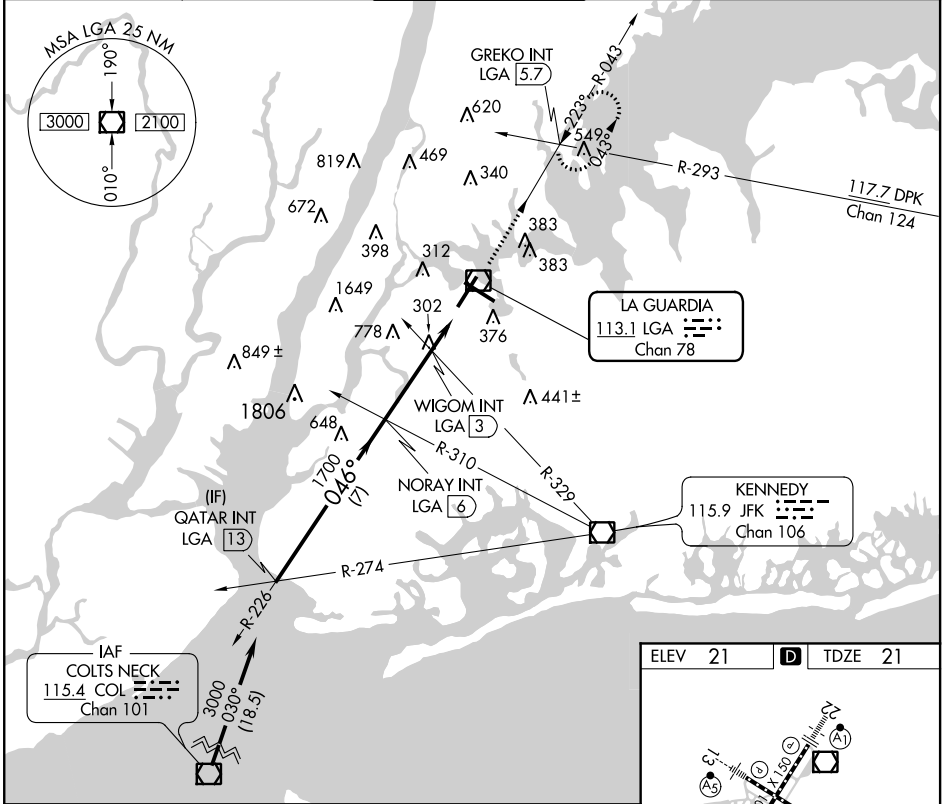
LAGUARDIA (LGA)

⚠ Inop table does not apply to Cats A and B.

MALSR 

MISSED APPROACH: Climb to 2000 on LGA VOR/DME R-043 to GREKO INT/LGA 5.7 DME and hold, continue climb-in-hold to 2000.

D-ATIS ARR D-ATIS DEP	125.95 127.05	NEW YORK APP CON	120.8 263.0	LAGUARDIA TOWER	118.7 263.0	GND CON	121.7 263.0	CLNC DEL	135.2	CPDLC
--------------------------	--------------------------------	------------------	--------------------	-----------------	--------------------	---------	--------------------	----------	--------------	-------



CATEGORY	A	B	C	D
S-4	560/50	539 (600-1)		560/60 539 (600-1 1/4)
C CIRCLING	700-1	679 (700-1)	1080-3 1059 (1100-3)	1260-3 1239 (1300-3)

FAF to MAP 4.9 NM					
Knots	60	90	120	150	180
Min:Sec	4:54	3:16	2:27	1:58	1:38

NE-2, 02 DEC 2021 to 30 DEC 2021

NE-2, 02 DEC 2021 to 30 DEC 2021