

ARLIN FOUR ARRIVAL

AL-322 (FAA)

PHOENIX, ARIZONA

SW-4, 02 DEC 2021 to 30 DEC 2021

ARRIVAL ROUTE DESCRIPTION

BLYTHE TRANSITION (BLH,ARLIN4): From over BLH VORTAC on BLH R-089 and IWA R-256 to ARLIN INT. Thence, . . .

MOHAK TRANSITION (MOHAK,ARLIN4): From over MOHAK INT on GBN R-247 and BXK R-215 to HYDRR INT, then on IWA R-256 to ARLIN INT. Thence, . . .

PHOENIX SKY HARBOR INTL: Rwy 7L/R or 8: From over ARLIN, Expect vectors to final approach course; Rwy 25L/R or 26: From over ARLIN, on IWA R-256 to TUKEE. Expect vectors to final approach course prior to TUKEE.

SATELLITE AIRPORTS: Expect vectors after passing SCOPE or JUDTH.

LOST COMMUNICATIONS: After ARLIN, on IWA R-256 and PXR R-143 to PXR VORTAC.

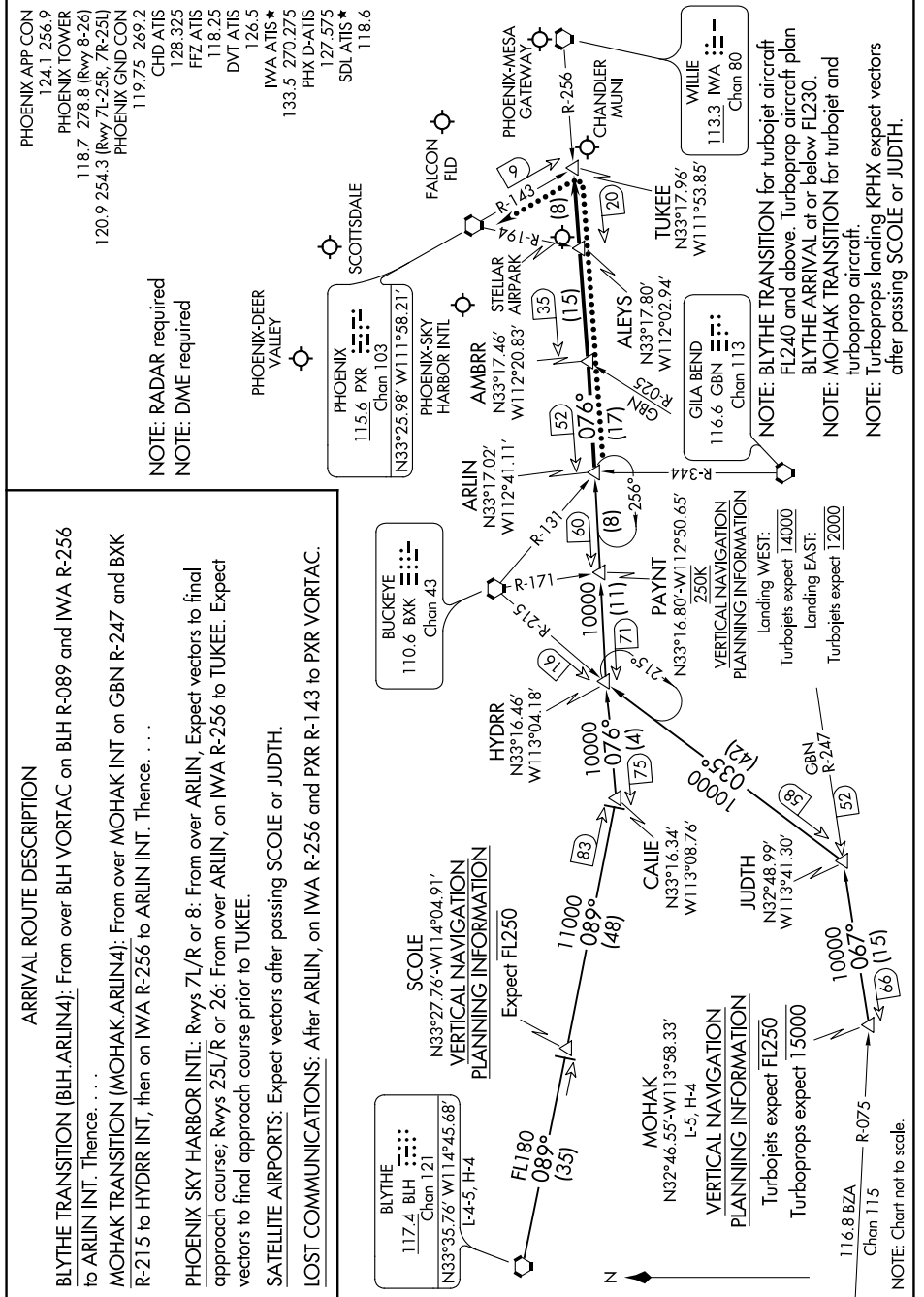
NOTE: RADAR required
NOTE: DME required

PHOENIX APP CON
124.1 256.9
PHOENIX TOWER
118.7 278.8 (Rwy 8-26)
120.9 254.3 (Rwy 7L-23R, 7R-25L)
PHOENIX GND CON
119.75 269.2
CHD ATIS
128.325
FFZ ATIS
118.25
DVT ATIS
126.5
IWA ATIS ★
133.5 270.275
PHX D-ATIS
127.575
SDL ATIS ★
118.6

PHOENIX-DEER VALLEY

ARLIN FOUR ARRIVAL

PHOENIX, ARIZONA



SW-4, 02 DEC 2021 to 30 DEC 2021

NOTE: Chart not to scale.