

LOC/DME I-CWJ <b>111.75</b> Chan <b>54 (Y)</b>	APP CRS <b>258°</b>	Rwy Idg <b>11489</b> TDZE <b>1135</b> Apt Elev <b>1135</b>
--	------------------------	--

# ILS or LOC RWY 26

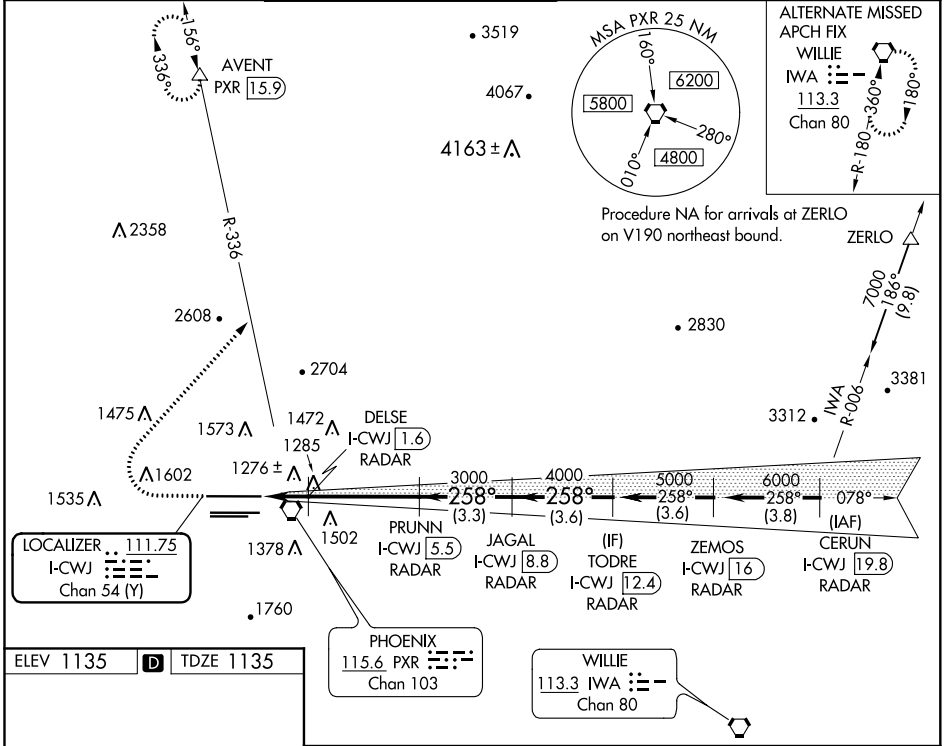
PHOENIX SKY HARBOR INTL (PHX)

DME or RADAR required.

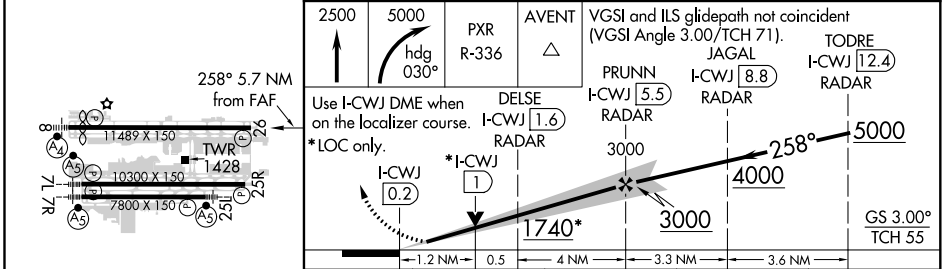
Simultaneous approach authorized.

MISSED APPROACH: Climb to 2500 then climbing right turn to 5000 on heading 030° and PXR VORTAC R-336 to AVENT/PXR 15.9 DME and hold.

D-ATIS <b>127.575</b>	PHOENIX APP CON <b>128.65 353.9</b>	PHOENIX TOWER <b>118.7 278.8</b> (Rwy 8-26) <b>120.9 254.3</b> (Rwy 7L-25R, 7R-25L)	GND CON <b>119.75 269.2 (N)</b> <b>132.55 269.2 (S)</b>	CLNC DEL <b>118.1 269.2</b>	CPDLC
--------------------------	--	---	---	--------------------------------	-------



ELEV 1135	<b>D</b>	TDZE 1135
-----------	----------	-----------



FAF to MAP 5.7 NM	1.2 NM	0.5	4 NM	3.3 NM	3.6 NM
CATEGORY	A		B		D
S-ILS 26	1385-3/4 250 (300-3/4)				
S-LOC 26	1580-1 445 (500-1)		1580-1 3/8 445 (500-3/8)		
<b>C</b> CIRCLING	1740-1 605 (700-1)		2040-2 3/4 905 (1000-2 3/4)		2560-3 1425 (1500-3)

HIRL Rwy 8-26, 7L-25R and 7R-25L REIL Rwy 26					
Knots	60	90	120	150	180
Min:Sec	5:42	3:48	2:51	2:17	1:54

PHOENIX, ARIZONA  
Amdt 1 15AUG19

33°26'N-112°01'W

# PHOENIX SKY HARBOR INTL (PHX) ILS or LOC RWY 26

SW-4, 02 DEC 2021 to 30 DEC 2021

SW-4, 02 DEC 2021 to 30 DEC 2021