

LOC/DME I-AHA <b>110.75</b> Chan <b>44 (Y)</b>	APP CRS <b>078°</b>	Rwy ldg <b>7800</b> TDZE <b>1116</b> Apt Elev <b>1135</b>
--	------------------------	---

# ILS or LOC RWY 7R

PHOENIX SKY HARBOR INTL (PHX)

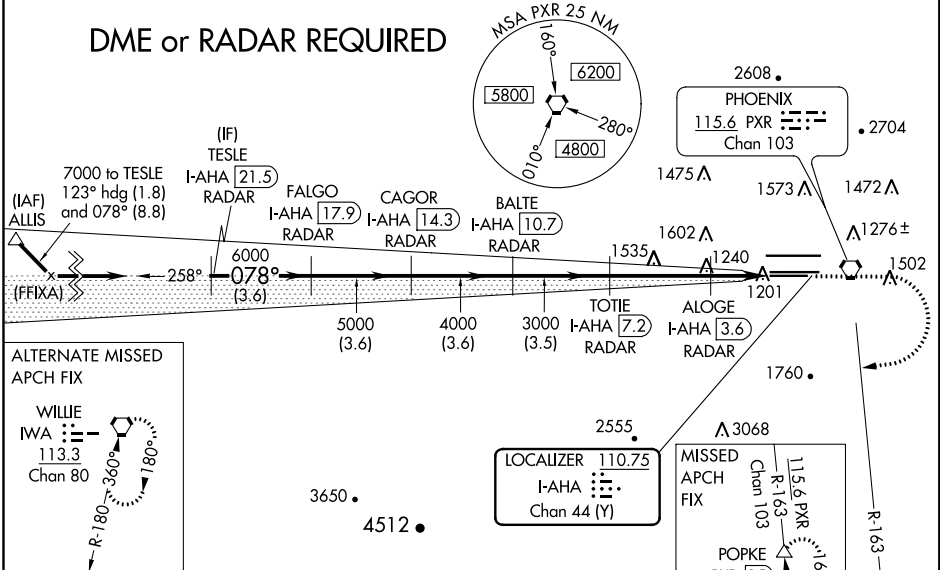
**⚠** Inoperative table does not apply to S-ILS 7R. Simultaneous approach authorized with ILS or LOC Rwy 8. DME required. Rwy 7R helicopter visibility reduction below 3/4 SM NA. LOC procedure NA during simultaneous operations. For inoperative ALS, increase S-LOC 7R visibility Cats A/B to 1 SM and Cats C/D to 1 1/2 SM.



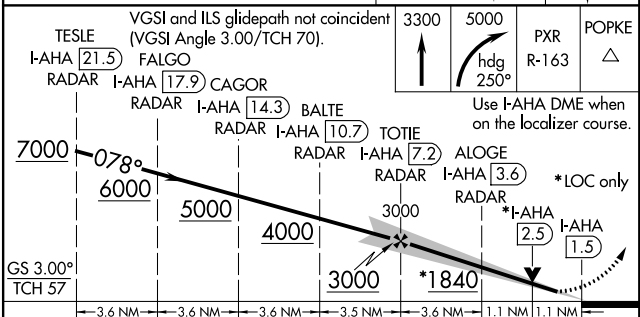
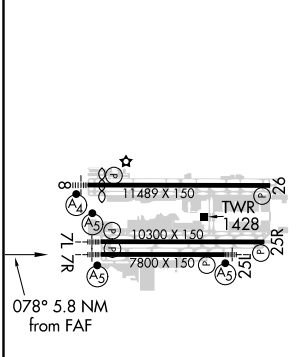
**MISSED APPROACH:** Climb to 3300 then climbing right turn to 5000 on heading 250° and PXR VORTAC R-163 to POPKE/PXR 15 DME and hold.

D-ATIS <b>127.575</b>	PHOENIX APP CON <b>128.65 353.9</b>	PHOENIX TOWER <b>118.7 278.8 (Rwy 8-26)</b> <b>120.9 254.3 (Rwy 7L-25R, 7R-25L)</b>	GND CON <b>119.75 269.2 (N)</b> <b>132.55 269.2 (S)</b>	CLNC DEL <b>118.1 269.2</b>	CPDLC
--------------------------	--	---	---	--------------------------------	-------

## DME or RADAR REQUIRED



ELEV <b>1135</b>	<b>D</b>	TDZE <b>1116</b>
------------------	----------	------------------



	CATEGORY	A	B	C	D
S-ILS 7R			1369-3/4	253 (300-3/4)	
S-LOC 7R			1520-3/4	404 (400-3/4)	
<b>C</b> CIRCLING		1740-1	605 (700-1)	2040-2 3/4 905 (1000-2 3/4)	2560-3 1425 (1500-3)

SW-4, 02 DEC 2021 to 30 DEC 2021

SW-4, 02 DEC 2021 to 30 DEC 2021