

LOC/DME I-SYQ <b>111.75</b> Chan <b>54 (Y)</b>	APP CRS <b>078°</b>	Rwy Idg <b>10591</b> TDZE <b>1118</b> Apt Elev <b>1135</b>
--	------------------------	--

# ILS or LOC RWY 8

PHOENIX SKY HARBOR INTL (PHX)

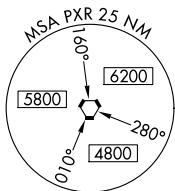
**Simultaneous approach authorized with Rwy 7R and RNAV (RNP) Z Rwy 7L, RNAV (GPS) Y Rwy 7L. DME required.**



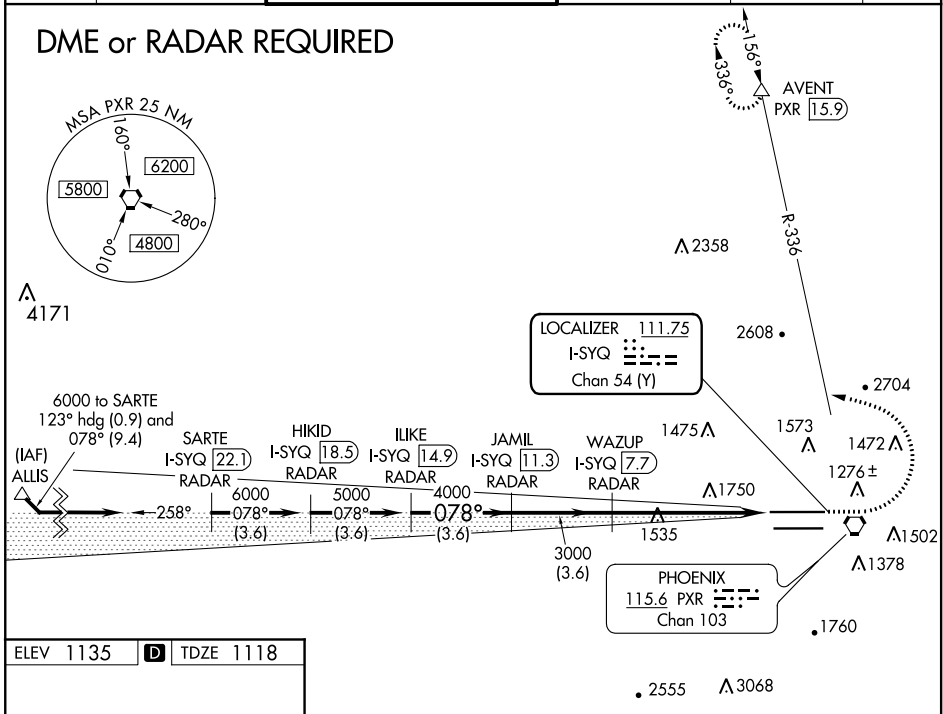
**MISSED APPROACH:** Climb to 3000, then climbing left turn to 5000 via heading 280° and PXR R-336 to AVENT/PXR 15.9 DME and hold.

D-ATIS <b>127.575</b>	PHOENIX APP CON <b>128.65 353.9</b>	PHOENIX TOWER <b>118.7 278.8</b> (Rwy 8-26) <b>120.9 254.3</b> (Rwy 7L-25R, 7R-25L)	GND CON <b>119.75 269.2 (N)</b> <b>132.55 269.2 (S)</b>	CLNC DEL <b>118.1 269.2</b>	CPDLC
--------------------------	--	---	---	--------------------------------	-------

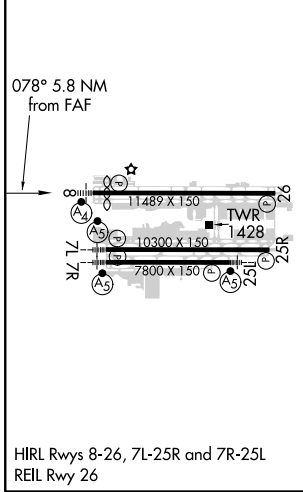
## DME or RADAR REQUIRED



4171



ELEV 1135	<b>D</b>	TDZE 1118
-----------	----------	-----------



VGSI and ILS glidepath not coincident (VGSI Angle 3.00/TCH 69).

ILIKE I-SYQ 14.9 RADAR	JAMIL I-SYQ 11.3 RADAR	WAZUP I-SYQ 7.7 RADAR	3000	5000	PXR R-336	AVENT
Use I-SYQ DME when on LOC course.			hdg 280°			
5000		4000	3000	I-SYQ 1.9		
GS 3.00° TCH 55		Procedure Turn NA				
3.6 NM		3.6 NM		5.7 NM		
A		B		C		
S-ILS 8		1368-1		250 (300-1)		
S-LOC 8		1860-1 742 (800-1)		1860-1¼ 742 (800-2¼)		1860-2½ 742 (800-2½)
<b>C</b> CIRCLING		1860-1 725 (800-1)		2040-2¾ 905 (1000-2¾)		2560-3 1425 (1500-3)

SW-4, 02 DEC 2021 to 30 DEC 2021

SW-4, 02 DEC 2021 to 30 DEC 2021