


APP CRS	Rwy Idg	<b>10300</b>
<b>078°</b>	TDZE	<b>1116</b>
	Apt Elev	<b>1135</b>

# RNAV (RNP) Z RWY 7L

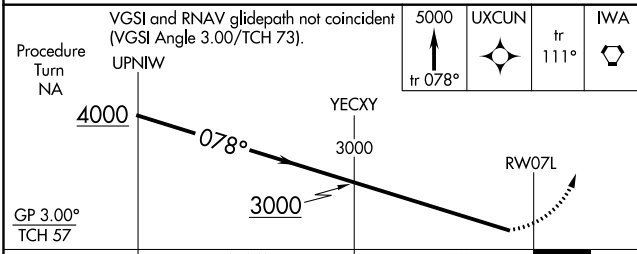
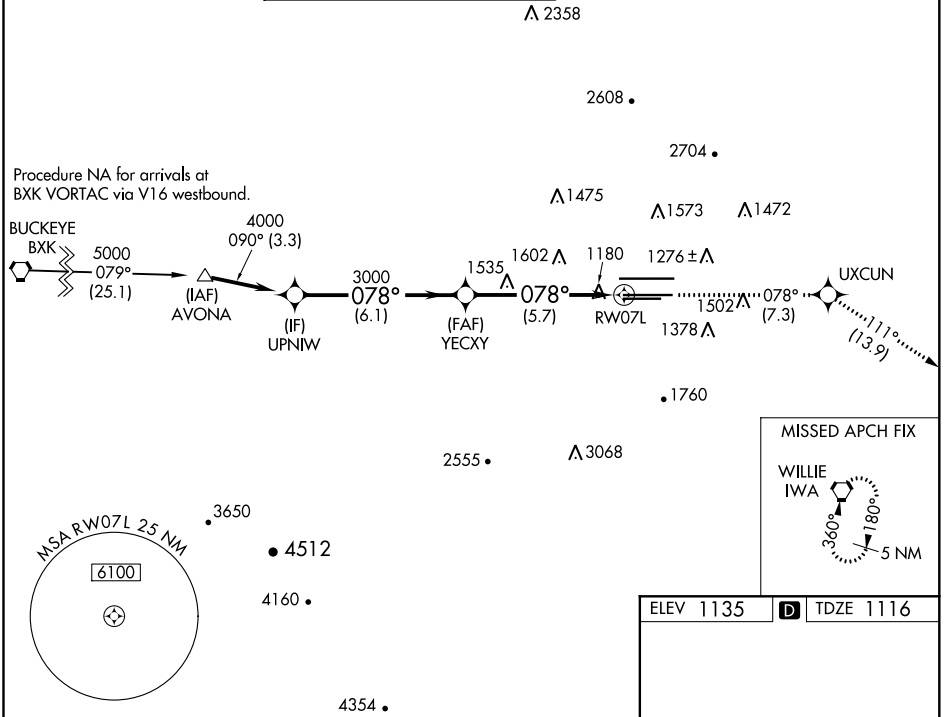
PHOENIX SKY HARBOR INTL (PHX)

**▽** GPS required. Visibility reduction by helicopters NA. For uncompensated Baro-VNAV systems, procedure NA below 1°C (34°F) or above 46°C (116°F). For inoperative MALSRS, increase RNP 0.30 all Cats visibility to 1½ mile. Simultaneous approach authorized with ILS or LOC Rwy 8. Use of FD or AP providing RNAV track guidance required during simultaneous operations.

**MALSRS** 

**MISSED APPROACH:**  
Climb to 5000 via track 078° to UXCUN and via track 111° to IWA VORTAC and hold.

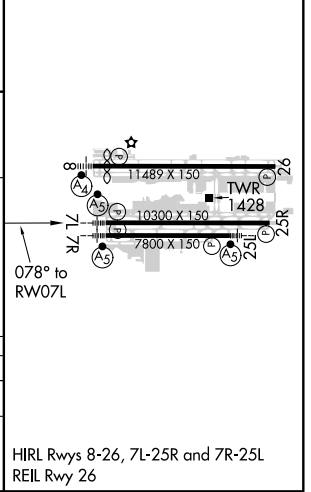
D-ATIS <b>127.575</b>	PHOENIX APP CON <b>128.65 353.9</b>	PHOENIX TOWER <b>118.7 278.8</b> (Rwy 8-26) <b>120.9 254.3</b> (Rwy 7L-25R, 7R-25L)	GND CON <b>119.75 269.2</b> (N) <b>132.55 269.2</b> (S)	CLNC DEL <b>118.1 269.2</b>	CPDLC
--------------------------	--	---	---	--------------------------------	-------



CATEGORY	A	B	C	D
RNP 0.30 DA	1523/50		407 (400-1)	

**AUTHORIZATION REQUIRED**

ELEV 1135	<b>D</b> TDZE 1116
-----------	--------------------



SW-4, 02 DEC 2021 to 30 DEC 2021

SW-4, 02 DEC 2021 to 30 DEC 2021

HIRL Rwy 8-26, 7L-25R and 7R-25L  
REIL Rwy 26