

WAAS CH <b>65811</b> <b>W07A</b>	APP CRS <b>078°</b>	Rwy Idg <b>10300</b> TDZE <b>1116</b> Apt Elev <b>1135</b>
--	------------------------	--

# RNAV (GPS) Y RWY 7L

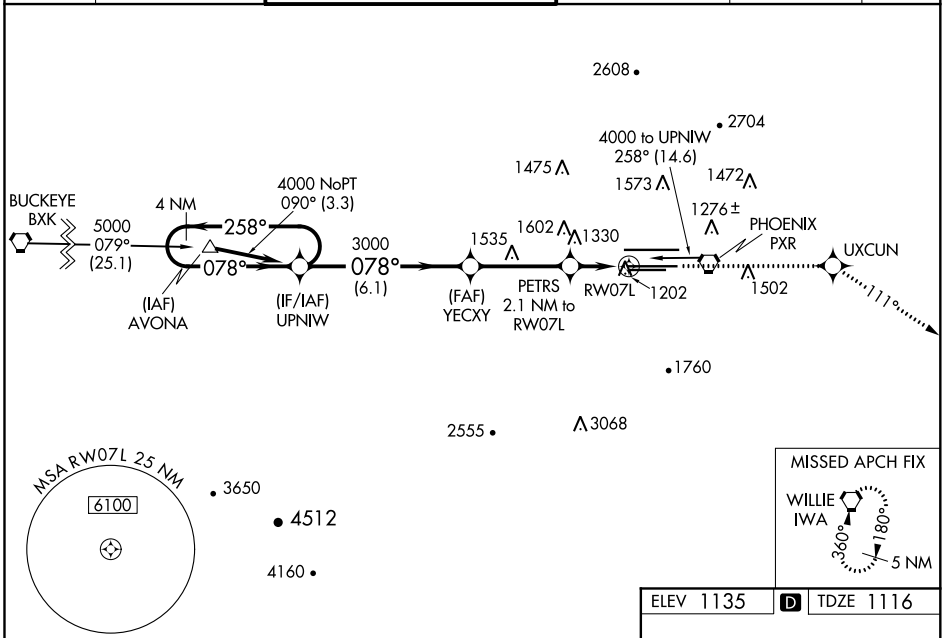
PHOENIX SKY HARBOR INTL (PHX)

**⚠** For inoperative ALS, increase visibility LPV all Cats to RVR 4500, LNAV/VNAV all Cats to RVR 6000, LNAV Cats C/D to 1 1/8 SM. For uncompensated Baro-VNAV systems, LNAV/VNAV NA below -17°C (2°F) or above 46°C (114°F). DME/DME RNP-0.3 NA. Simultaneous approach authorized with ILS or LOC Rwy 8. Use of FD or AP providing RNAV track guidance required during simultaneous operations. LNAV procedure NA during simultaneous operations.

MALSR

MISSED APPROACH: Climb to 5000 direct UXCUN and via 111° track to IWA VORTAC and hold.

D-ATIS <b>127.575</b>	PHOENIX APP CON <b>128.65 353.9</b>	PHOENIX TOWER <b>118.7 278.8</b> (Rwy 8-26) <b>120.9 254.3</b> (Rwy 7L-25R, 7R-25L)	GND CON <b>119.75 269.2</b> (N) <b>132.55 269.2</b> (S)	CLNC DEL <b>118.1 269.2</b>	CPDLC
--------------------------	--	---	---	--------------------------------	-------



SW-4, 02 DEC 2021 to 30 DEC 2021

SW-4, 02 DEC 2021 to 30 DEC 2021

VGSi and RNAV glidepath not coincident (VGSi Angle 3.00/TCH 73).		5000	UXCUN	tr 111°	IWA
4 NM Holding Pattern		UPNIW	YECXY	PETRS 2.1 NM to RW07L	*LNAV only.
GP 3.00° TCH 57		4000	3000	*1.3 NM to RW07L	RW07L
6.1 NM		3.6 NM		0.8	1.3 NM
CATEGORY	A	B	C	D	
LPV DA	1389/24		273 (300-1/2)		
LNAV/VNAV DA	1519/50		403 (400-1)		
LNAV MDA	1580/24	464 (500-1/2)	1580/40	1580/50	
			464 (500-3/4)	464 (500-1)	
<b>C</b> CIRCLING	1740-1	605 (700-1)	2040-2 3/4	2560-3	
			905 (1000-2 3/4)	1425 (1500-3)	

078° to RW07L

Plan view diagram showing the RNAV Y RWY 7L approach. Key waypoints and distances include: UPNIW (4 NM from AVONA), YECXY (3000), PETRS (2.1 NM to RW07L), RW07L (1202), PHOENIX PXR (1502), and UXCUN (1760). Distances are marked in NM. A 4 NM holding pattern is shown at UPNIW. A missed approach fix (MISSED APCH FIX) is shown at Willie IWA, 5 NM from PHOENIX PXR.