

HI-ILS or LOC Y RWY 30

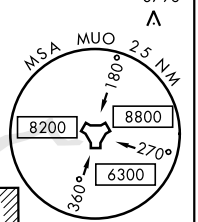
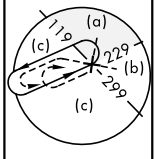
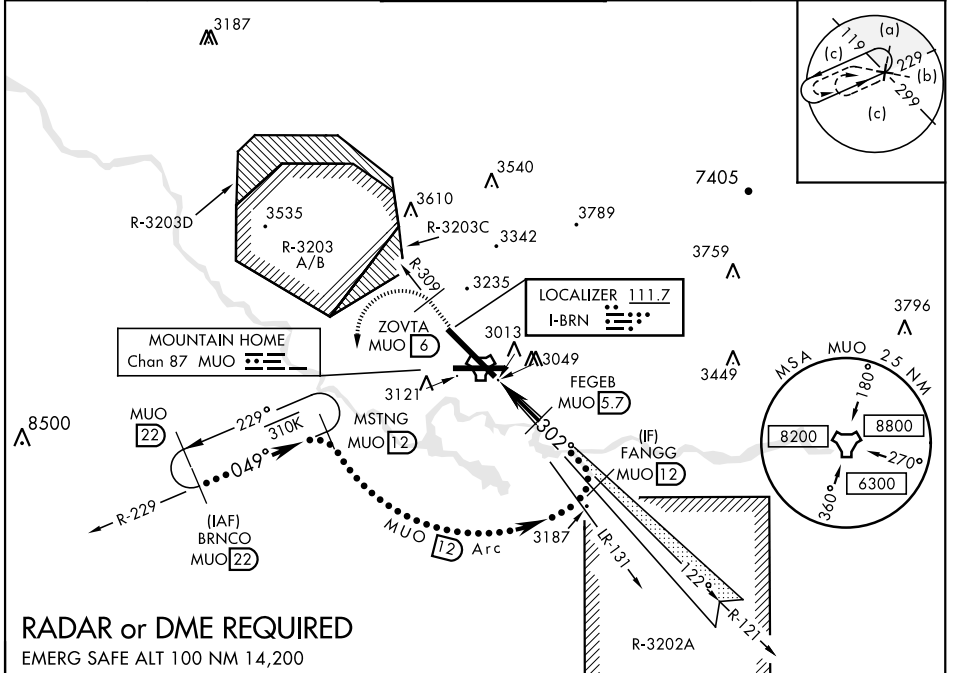
LOC I-BRN 111.7	APCH CRS 302°	Rwy Idg 13,510 TDZE 2996 Arpt Elev 2996	JAL-323 [USAF]	MOUNTAIN HOME AFB (KMUO)
---------------------------	-------------------------	--	----------------	--------------------------

▼ * When ALS inop, increase CAT CDE RVR to 47 and vis to 1 mile.
 ** When ALS inop, increase CAT CDE vis to 1 1/2 miles.
 *** Circling NA NE of Rwy 12-30.



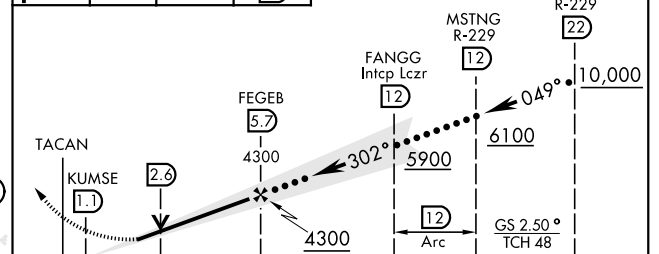
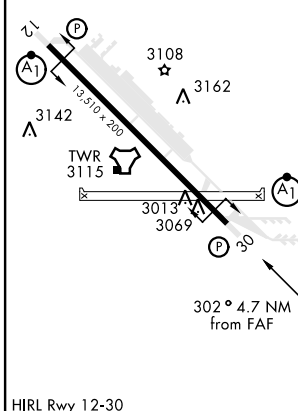
MISSED APPROACH: Climb to 10,000 via MUO R-309 to ZOVTA/6 DME, turn left and intcp MUO R-229 to MSTNG/12 DME and hold. Continue climb in hold to 10,000.

ATIS 273.5	MOUNTAIN HOME APP CON 124.8 259.1	MOUNTAIN HOME TOWER 133.85 253.5	GND CON 120.5 275.8	CLNC DEL 127.1 290.425
----------------------	---	--	-------------------------------	----------------------------------



RADAR or DME REQUIRED
EMERG SAFE ALT 100 NM 14,200

ELEV 2996	TDZE 2996	10,000 MUO R-309	ZOVTA MUO 6	MUO R-229	MSTNG MUO R-229 12	VGSI and ILS glidepath not coincident (VGSI Angle 2.50/TCH 40).
-----------	-----------	---------------------	-------------	-----------	--------------------	---



CATEGORY	C	D	E
S-ILS 30 *	3246/40	250 (300-3/4)	
S-LOC 30 **	3460/50	464 (500-1)	
C CIRCLING ***	3560-1 1/2 564 (600-1 1/2)	3560-2 564 (600-2)	3700-2 1/2 704 (800-2 1/2)

HI-ILS or LOC Y RWY 30

NW-1, 02 DEC 2021 to 30 DEC 2021

NW-1, 02 DEC 2021 to 30 DEC 2021