

# ILS or LOC Z RWY 12

LOC I-MUO <b>110.3</b>	APCH CRS <b>122°</b>	Rwy Ldg <b>13,510</b> TDZE <b>2987</b> Arprt Elev <b>2996</b>
---------------------------	-------------------------	--

AL-323 [USAF]

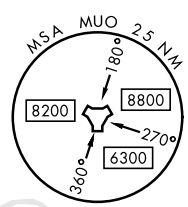
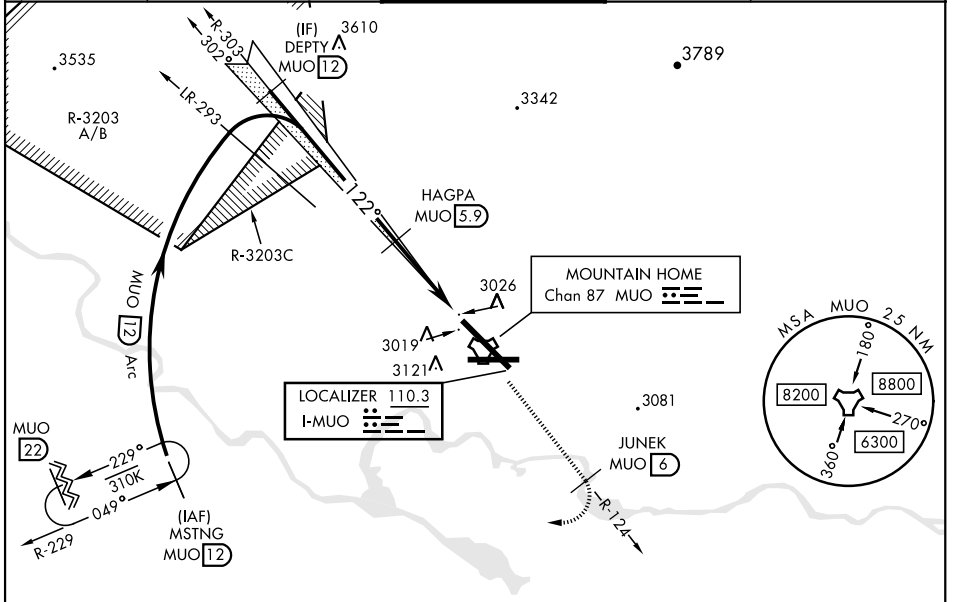
MOUNTAIN HOME AFB (KMUO)

▼ \* When ALS inop, increase RVR to 40, vis to ¼ mile.  
 \*\* When ALS inop, increase CAT AB RVR to 55 and vis to 1 mile, CAT CDE vis to 1¾ miles.  
 \*\*\* Circling NA NE of Rwy 12-30.



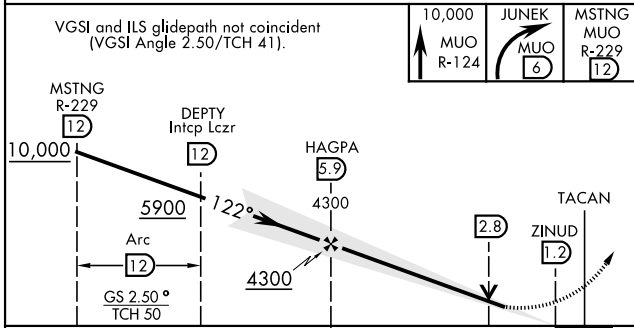
MISSED APPROACH: Climb to 10,000 via MUO R-124 to JUNEK/6 DME, turn right and intercept MUO R-229 to MSTNG/12 DME and hold. Continue climb in hold to 10,000.

ATIS <b>273.5</b>	MOUNTAIN HOME APP CON <b>124.8 259.1</b>	MOUNTAIN HOME TOWER <b>133.85 253.5</b>	GND CON <b>120.5 275.8</b>	CLNC DEL <b>127.1 290.425</b>
----------------------	---	--	-------------------------------	----------------------------------

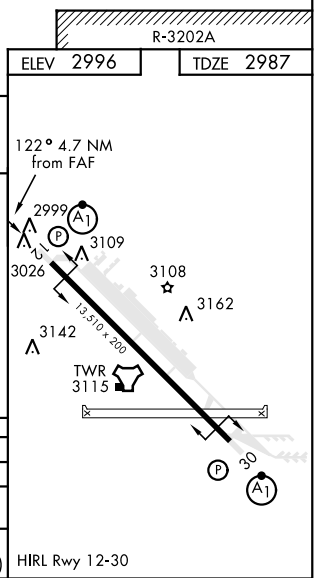


## RADAR or DME REQUIRED

EMERG SAFE ALT 100 NM 14,200



VGSi and ILS glidepath not coincident (VGSi Angle 2.50/TCH 41).	10,000 MUO R-124	JUNEK MUO 6	MSTNG MUO R-229 12		
CATEGORY	A	B	C	D	E
S-ILS 12 *	3190/24 203 (200-½)				
S-LOC 12 **	3460/24	473 (500-½)	3460/50	473	(500-1)
*** CIRCLING	3520-1 524 (600-1)	3560-1 564 (600-1)	3560-1½ 564 (600-1½)	3560-2 564 (600-2)	3700-2½ 704 (800-2½)



# ILS or LOC Z RWY 12

NW-1, 02 DEC 2021 to 30 DEC 2021

NW-1, 02 DEC 2021 to 30 DEC 2021