

# TACAN Z RWY 30

MOUNTAIN HOME AFB (KMUO)

TACAN MUO Chan 87	APCH CRS 295°	Rwy Idg 13,510 TDZE 2996 Arpt Elev 2996
----------------------	------------------	---

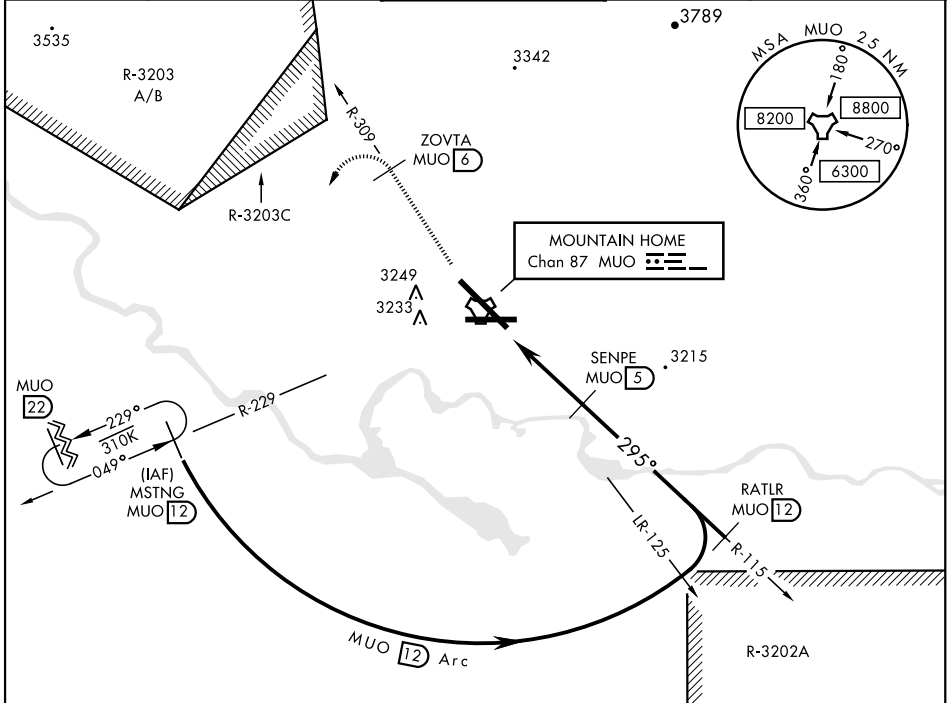
AL-323 [USAF]

▼ \* When ALS inop, increase CAT AB RVR to 55 and vis to 1 mile, CAT CDE vis to 1½ miles.  
 \*\* Circling NA NE of Rwy 12-30.



**MISSED APPROACH:** Climb to 10,000 via MUO R-309 to ZOVTA/6 DME, turn left and intercept MUO R-229 to MSTNG/12 DME and hold. Continue climb in hold to 10,000.

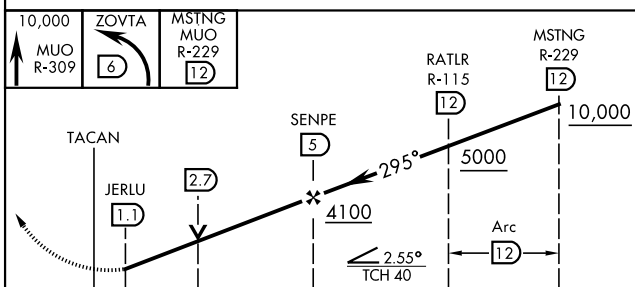
ATIS <b>273.5</b>	MOUNTAIN HOME APP CON <b>124.8 259.1</b>	MOUNTAIN HOME TOWER <b>133.85 253.5</b>	GND CON <b>120.5 275.8</b>	CLNC DEL <b>127.1 290.425</b>
----------------------	---	--	-------------------------------	----------------------------------



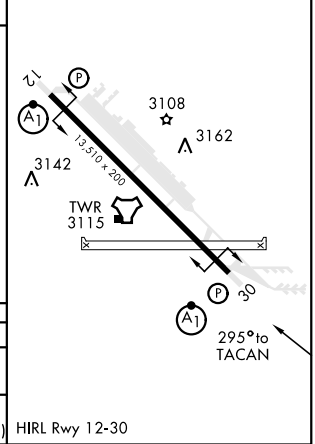
NW-1, 02 DEC 2021 to 30 DEC 2021

NW-1, 02 DEC 2021 to 30 DEC 2021

EMERG SAFE ALT 100 NM 14,200



ELEV 2996	TDZE 2996
-----------	-----------



CATEGORY	A	B	C	D	E
S-30 *	3480/24 484 (500-½)		3480/50 484 (500-1)		
<b>CIRCLING</b> **	3520-1 524 (600-1)	3560-1 564 (600-1)	3560-1½ 564 (600-1½)	3560-2 564 (600-2)	3700-2½ 704 (800-2½)

HIRL Rwy 12-30

# TACAN Z RWY 30