

LOC I-EZD 110.9	APP CRS 023°	Rwy Idg TDZE Apt Elev	6607 161 168
---------------------------	------------------------	-----------------------------	---

ILS or LOC RWY 2

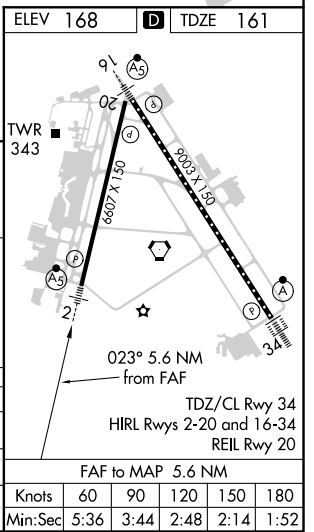
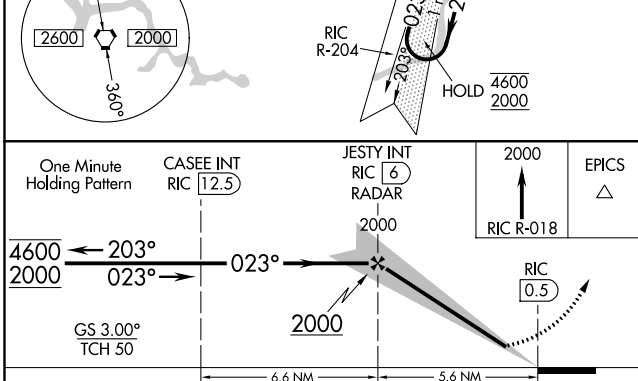
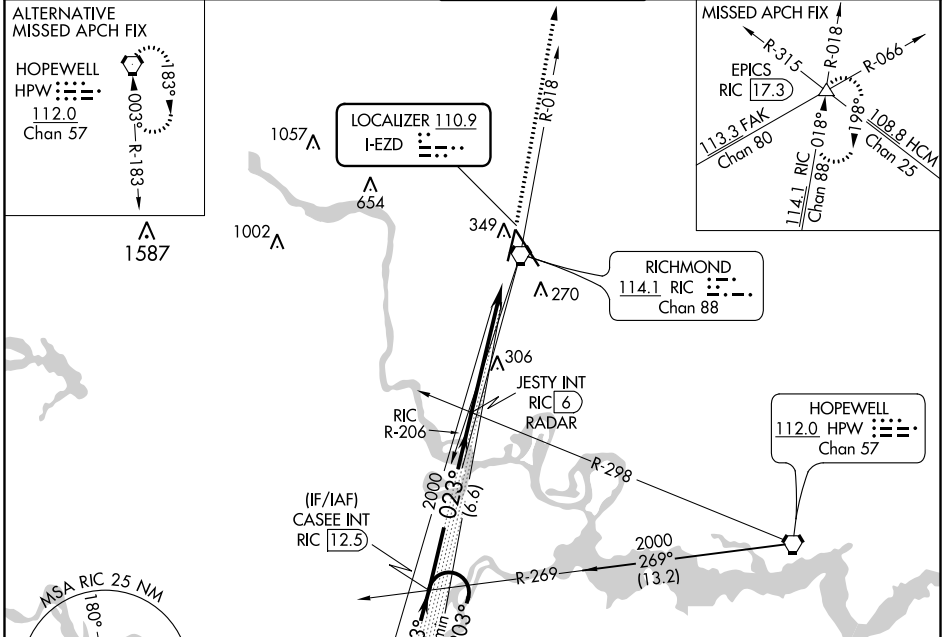
RICHMOND INTL (RIC)

▼ Rwy 2 helicopter visibility reduction below ¼ SM NA. For inop ALS, increase S-ILS 2 all Cats visibility to ⅝ SM and S-LOC 2 Cats A and B visibility to 1 SM.

MALSRL

MISSED APPROACH: Climb to 2000 on RIC VORTAC R-018 to EPICS INT/ RIC 17.3 DME and hold.

ATIS 119.15 263.025	POTOMAC APP CON 126.4 282.375 (001°-185°) 126.75 307.2 (186°-360°)	RICHMOND TOWER 121.1 257.8	GND CON 121.9 348.6	CLNC DEL 127.55 348.6
-------------------------------	--	--------------------------------------	-------------------------------	---------------------------------



CATEGORY	A	B	C	D
S-ILS 2		457-¾ 296 (300-¾)		
S-LOC 2		560-¾ 399 (400-¾)		
C CIRCLING	660-1 492 (500-1)		700-1½ 532 (600-1½)	720-2 552 (600-2)

Knots	60	90	120	150	180
Min:Sec	5:36	3:44	2:48	2:14	1:52

NE-3, 02 DEC 2021 to 30 DEC 2021

NE-3, 02 DEC 2021 to 30 DEC 2021