

VORTAC RIC 114.1 Chan 88	APP CRS 188°	Rwy Idg TDZE 168 Apt Elev 168	6607
----------------------------------------------	------------------------	---------------------------------------------------	-------------

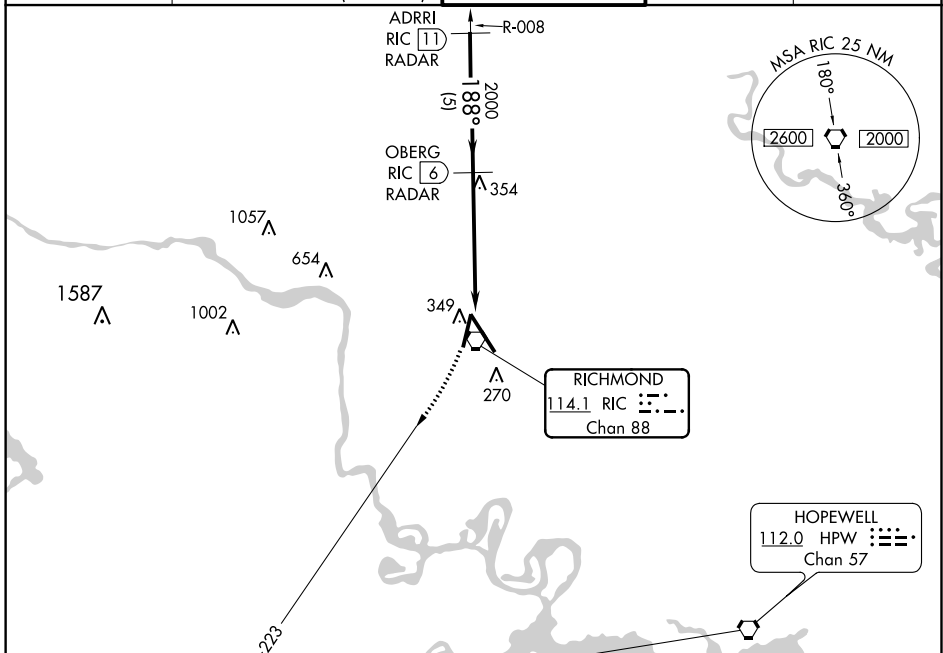
VOR RWY 20

RICHMOND INTL (RIC)

RADAR required for procedure entry. DME or RADAR required.

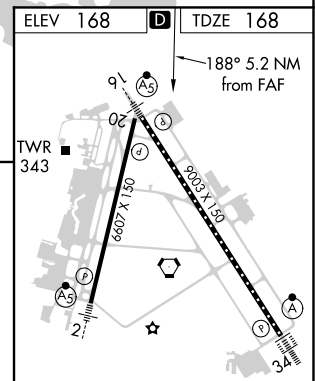
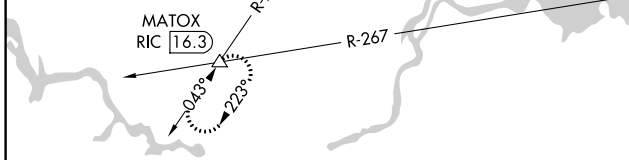
MISSED APPROACH: Climbing right turn to 2000 on RIC R-223 to MATOX INT/RIC 16.3 DME and hold.

Rwy 20 helicopter visibility reduction below 3/4 SM NA.		RICHMOND TOWER 121.1 257.8		GND CON 121.9 348.6		CLNC DEL 127.55 348.6	
ATIS 119.15 263.025	POTOMAC APP CON 126.4 282.375 (001°-185°) 126.75 307.2 (186°-360°)						



NE-3, 02 DEC 2021 to 30 DEC 2021

NE-3, 02 DEC 2021 to 30 DEC 2021



2000 RIC R-223	MATOX △	VGS1 and descent angles not coincident (VGS1 Angle 3.00/TCH 49).			
		OBERG RIC (6) RADAR	ADIRRI RIC (11) RADAR		
			2000		
			188°		
			3.26° TCH 50		
			1.4		
			3.8 NM		
			5 NM		
CATEGORY	A	B	C	D	
S-20	660-1	492 (500-1)	660-1 3/8	492 (500-1 3/8)	
CIRCLING	660-1	492 (500-1)	700-1 1/2	720-2	
			532 (600-1 1/2)	552 (600-2)	

TDZ/CL Rwy 34					
HIRL Rwys 2-20 and 16-34					
REIL Rwy 20					
FAF to MAP 5.2 NM					
Knots	60	90	120	150	180
Min:Sec	5:12	3:28	2:36	2:05	1:44