

LOC/DME I-SMX	APP CRS	Rwy Idg	8004
108.9	120°	TDZE	230
Chan 26		Apt Elev	261

ILS or LOC RWY 12

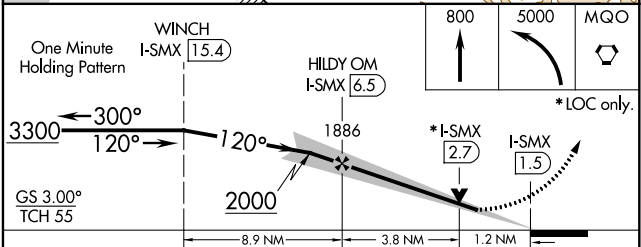
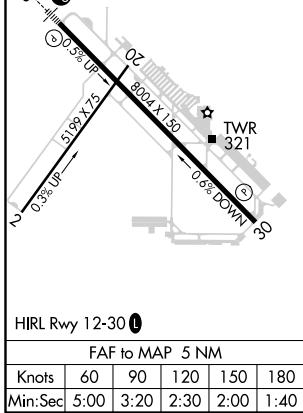
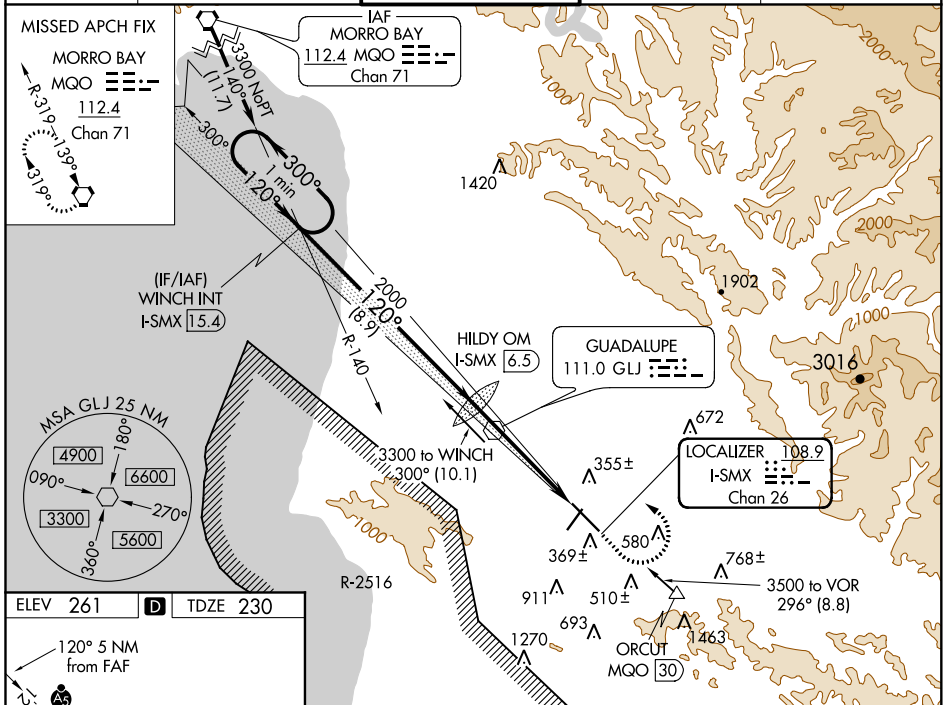
SANTA MARIA PUB/CAPT G ALLAN HANCOCK FLD (SMX)

⚠ Night Landing: Rwy 2 NA. VDP NA with Vandenberg altimeter setting.
⚠ When local altimeter setting not received, use Vandenberg altimeter setting and increase all DA 43 feet, and all MDA 60 feet, increase S-LOC 12 Cat C/D visibility to RVR 5500 and Circling Cat C visibility to 1¾. For inop MALSRS, increase S-LOC 12 Cat C/D visibility to 1¾ mile.
 # RVR 1800 authorized with the use of FD or AP or HUD to DA.



MISSED APPROACH: Climb to 800, then climbing left turn to 5000 direct MQO VORTAC and hold.

ATIS	SANTA BARBARA APP CON*	SANTA MARIA TOWER*	GND CON	UNICOM
121.15	124.15 327.8	118.3 (CTAF) 0 239.25	121.9	122.95



WINDCH	I-SMX	1.5.4	800	5000	MQO
One Minute Holding Pattern			↑	↻	⬡
3300	← 300°	→ 120°	→ 120°	→ 300°	
GS 3.00°					
TCH 55					
	8.9 NM	3.8 NM	1.2 NM		
CATEGORY	A	B	C	D	
S-ILS 12#	430/24 200 (200-½)				
S-LOC 12	680/24	450 (500-½)	680/50	450 (500-1)	
CIRCLING	860-1	599 (600-1)	860-1½	1320-3	
			599 (600-1½)	1059 (1100-3)	

ILS or LOC RWY 12

SW-3, 02 DEC 2021 to 30 DEC 2021

SW-3, 02 DEC 2021 to 30 DEC 2021