

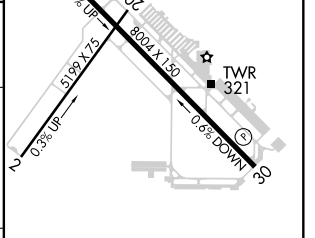
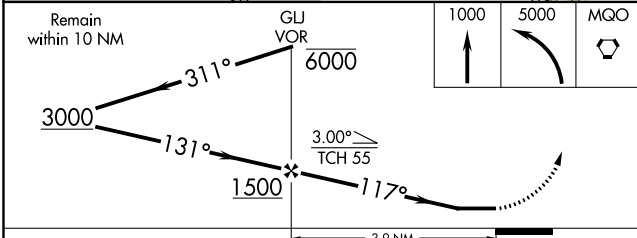
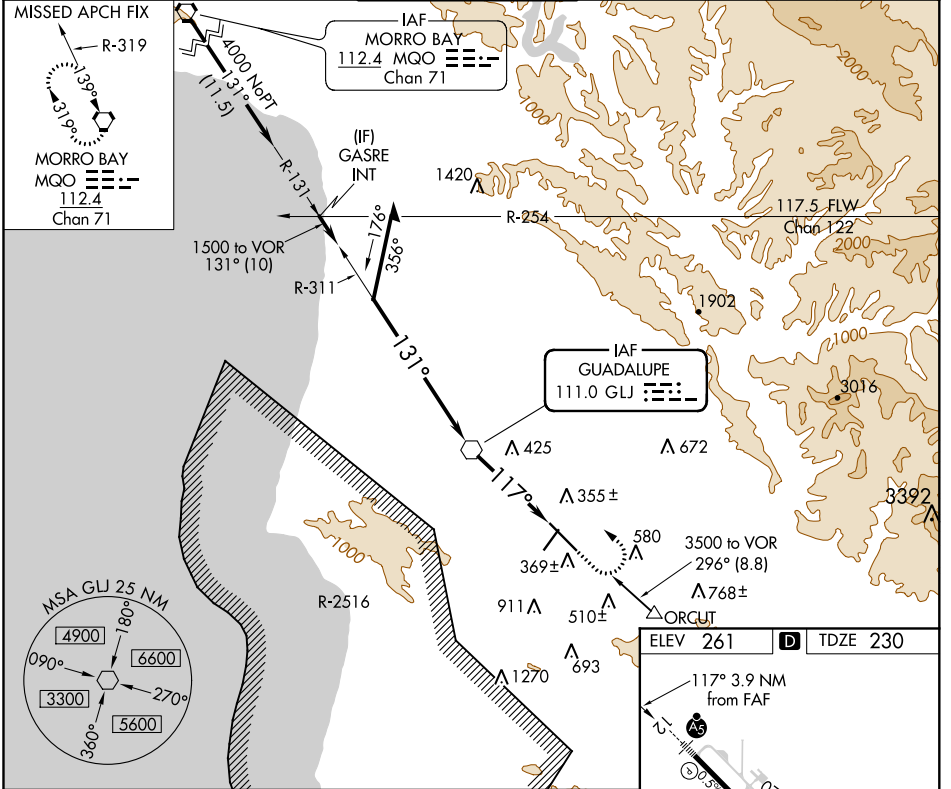
VOR GLJ 111.0	APP CRS 117°	Rwy Idg TDZE Apt Elev	8004 230 261
-------------------------	------------------------	-----------------------------	---

VOR RWY 12

SANTA MARIA PUB/CAPT G ALLAN HANCOCK FLD (SMX)

<p>When local altimeter setting not received, use Vandenberg altimeter setting and increase all MDA 60 feet. Increase S-12 Cat C/D visibility and Circling Cat C visibility 1/2 mile. For inop MALSR when using Vandenberg altimeter setting, increase S-12 Cat C/D visibility to 1 1/8 miles. Night Landing Rwy 2 NA.</p>	<p>MALSR</p>	<p>MISSED APPROACH: Climb to 1000 then climbing left turn to 5000 direct MQO VORTAC and hold.</p>
		<p>VORTAC</p>

ATIS 121.15	SANTA BARBARA APP CON* 124.15 327.8	SANTA MARIA TOWER* 118.3 (CTAF) 239.25	GND CON 121.9	UNICOM 122.95
-----------------------	---	--	-------------------------	-------------------------



CATEGORY	A	B	C	D
S-12	740/24	510 (500-1/2)	740/55	510 (500-1)
CIRCLING	860-1	599 (600-1)	860-1 1/2 599 (600-1 1/2)	1320-3 1059 (1100-3)

HIRL Rwy 12-30					
FAF to MAP 3.9 NM					
Knots	60	90	120	150	180
Min:Sec	3:54	2:36	1:57	1:34	1:18

VOR RWY 12

SW-3, 02 DEC 2021 to 30 DEC 2021

SW-3, 02 DEC 2021 to 30 DEC 2021