


| | | |
|---|------------------------|--|
| LOC/DME I-RMT 110.35 Chan 40 (Y) | APP CRS 126° | Rwy Idg 8279 TDZE 3963 Apt Elev 3967 |
|---|------------------------|--|

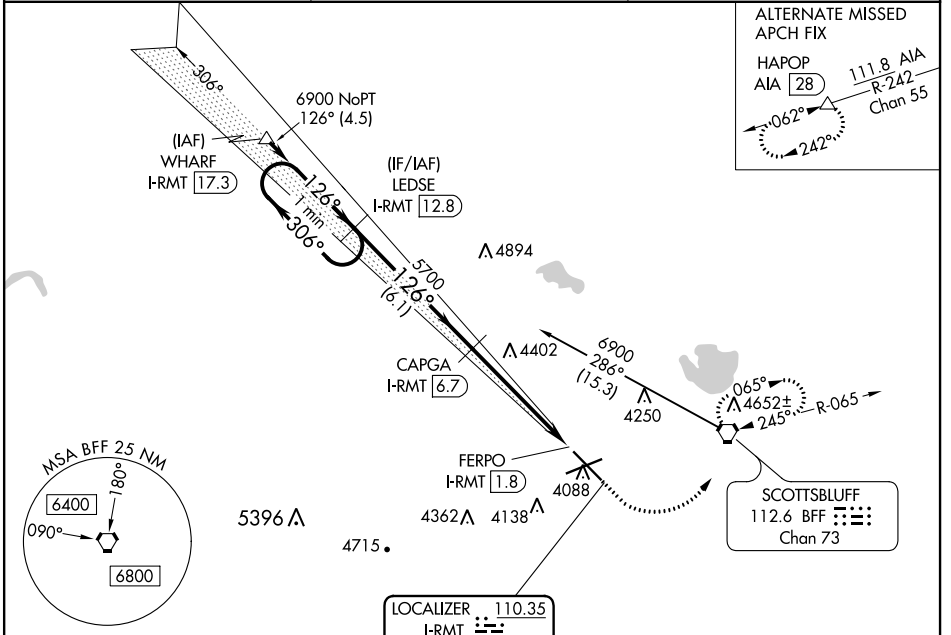
ILS or LOC/DME RWY 12

WESTERN NEBRASKA RGNL/WILLIAM B HEILIG FLD (BFF)

⚠ When local altimeter setting not received, use Alliance altimeter setting and increase DA 91 feet; all MDAs 100 feet, and S-LOC 12 and Circling Cat B/C/D visibilities ½ mile. For inoperative MALSR, when using Alliance altimeter setting, increase S-ILS 12 visibility to 1. VDP NA when using Alliance altimeter setting.

MALSR  **MISSED APPROACH:** Climb to 4500 then climbing left turn to 6900 direct BFF VORTAC and hold, continue climb-in-hold to 6900.

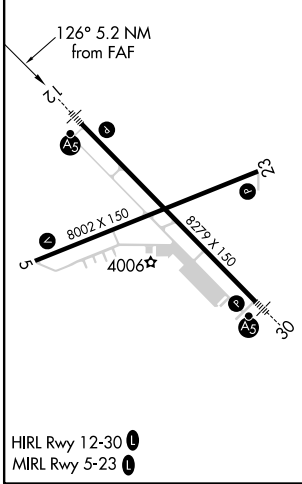
| | | |
|------------------------|--------------------------------------|---------------------------------|
| ASOS 121.025 | DENVER CENTER 127.95 338.2 | UNICOM 123.0 (CTAF) 0 |
|------------------------|--------------------------------------|---------------------------------|



NC-2, 02 DEC 2021 to 30 DEC 2021

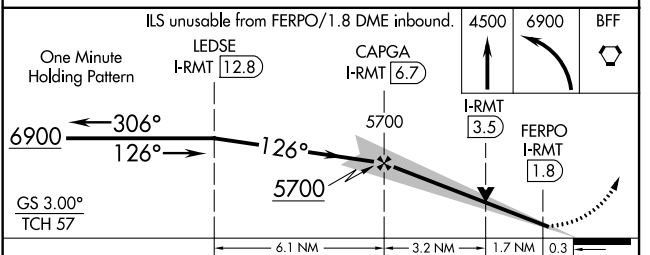
NC-2, 02 DEC 2021 to 30 DEC 2021

| | | |
|-----------|----------|-----------|
| ELEV 3967 | D | TDZE 3963 |
|-----------|----------|-----------|



HIRL Rwy 12-30 **0**
MIRL Rwy 5-23 **0**

DME REQUIRED



| CATEGORY | A | B | C | D |
|-------------------|--------------------|----------------------|----------------------|----------------------|
| S-ILS 12 | 4163-½ 200 (200-½) | | | |
| S-LOC 12 | 4640-½ 677 (700-½) | 4640-1½ 677 (700-1½) | 4640-1¾ 677 (700-1¾) | 4640-1¾ 677 (700-1¾) |
| C CIRCLING | 4640-1 673 (700-1) | 4640-2 673 (700-2) | 4740-2½ 773 (800-2½) | 4740-2½ 773 (800-2½) |