

VORTAC BFF <b>112.6</b> Chan <b>73</b>	APP CRS <b>245°</b>	Rwy Idg TDZE Apt Elev	<b>8002</b> <b>3967</b> <b>3967</b>
--	------------------------	-----------------------------	---

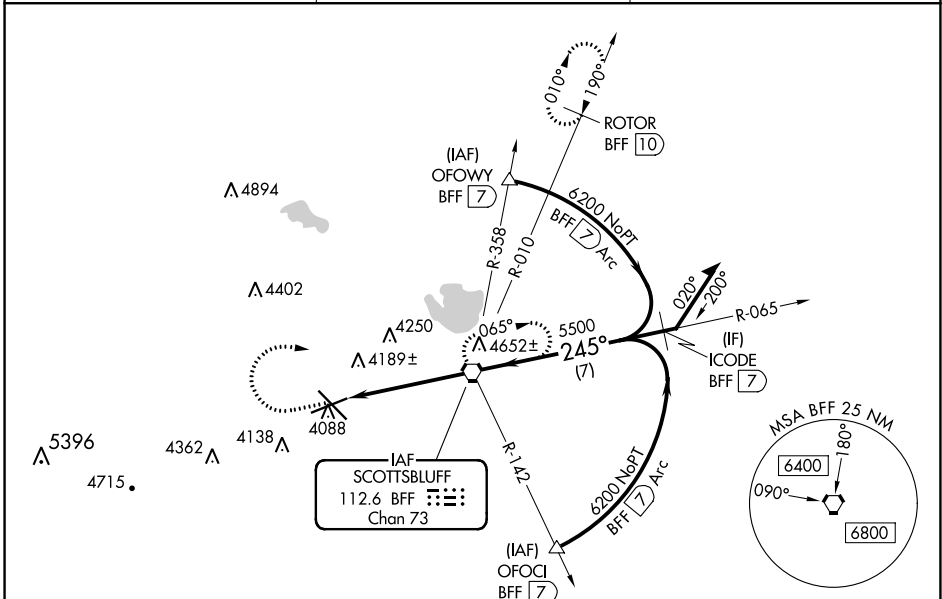
# VOR or TACAN RWY 23

WESTERN NEBRASKA RGNL/WILLIAM B HEILIG FLD (BTF)

**⚠** When local altimeter setting not received, use Alliance altimeter setting: increase all MDAs 100 feet and visibility Cats C and D ½ SM. VDP NA when using Alliance altimeter setting. Visibility reduction by helicopters NA.

**MISSED APPROACH:** Climb to 5000 then climbing right turn to 6500 direct BFF VORTAC and hold (TACAN aircraft continue climb to 7300 via BFF R-010 to ROTOR 10 DME and hold north, right turn 190° inbound).

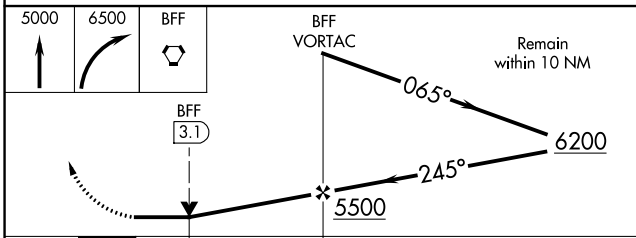
ASOS <b>121.025</b>	DENVER CENTER <b>127.95 338.2</b>	UNICOM <b>123.0 (CTAF) 0</b>
------------------------	--------------------------------------	---------------------------------



NC-2, 02 DEC 2021 to 30 DEC 2021

NC-2, 02 DEC 2021 to 30 DEC 2021

ELEV 3967	<b>D</b> TDZE 3967
-----------	--------------------



ELEV 3967		<b>D</b> TDZE 3967	
HIRL Rwy 12-30 <b>0</b>			
MIRL Rwy 5-23 <b>0</b>			
FAF to MAP 4.7 NM			
Knots	60	90	120 150 180
Min:Sec	4:42	3:08	2:21 1:53 1:34

# VOR or TACAN RWY 23