

WAAS CH 58303 W18A	APP CRS 180°	Rwy Idg 6015 TDZE 224 Apt Elev 224
--	------------------------	---

RNAV (GPS) RWY 18

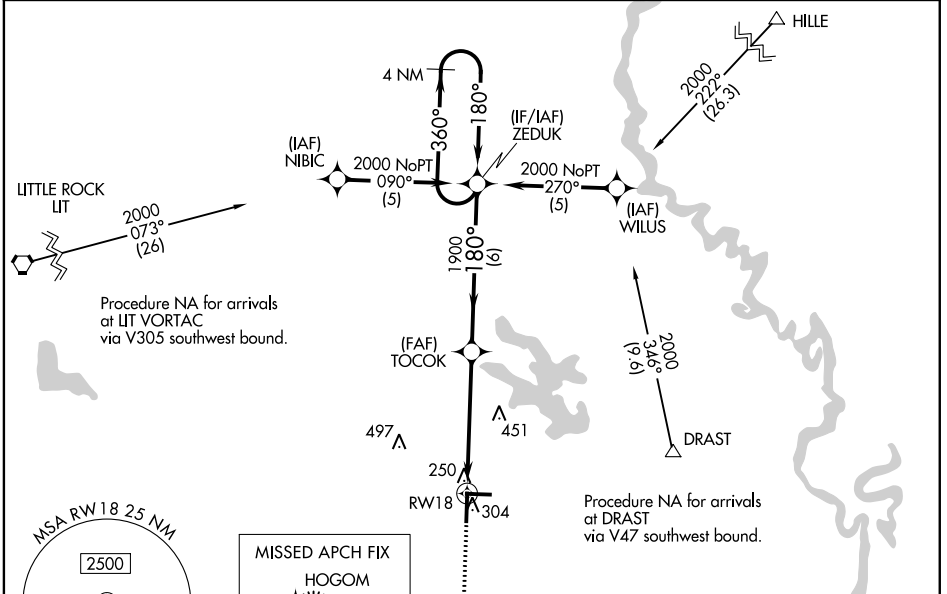
STUTTGART MUNI CARL HUMPHREY FLD (SGT)

RNP APCH

▼ For uncompensated Baro-VNAV systems, LNAV/VNAV NA below -15°C (5°F) or above 48°C (118°F).
 ▲ When local altimeter setting not received, use Bill and Hillary Clinton Nil/Adams Fld altimeter setting; increase LPV DA to 556 feet; increase LNAV/VNAV DA to 602 feet; increase all MDAs 100 feet and visibility Cats C and D ¼ SM. Baro-VNAV NA when using Bill and Hillary Clinton Nil/Adams Fld altimeter setting. VDP NA when using Bill and Hillary Clinton Nil/Adams Fld altimeter setting.

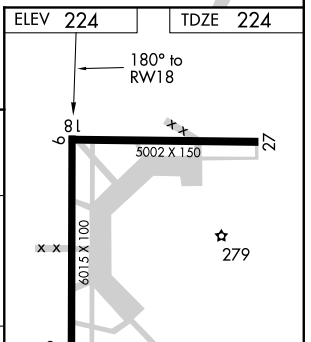
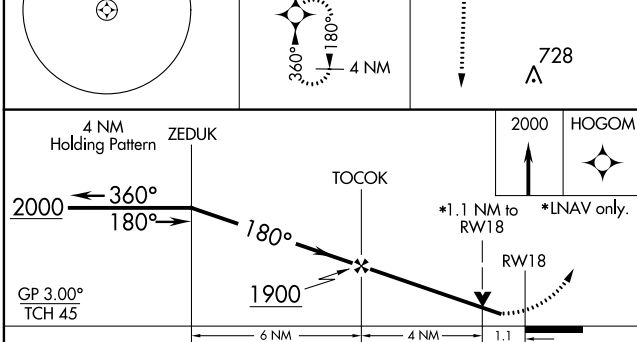
MISSED APPROACH:
Climb to 2000 direct HOGOM and hold.

AWOS-3PT 119.025	LITTLE ROCK APP CON 135.4 353.6	CLNC DEL 123.7	UNICOM 122.8 (CTAF) 0
----------------------------	---	--------------------------	---------------------------------

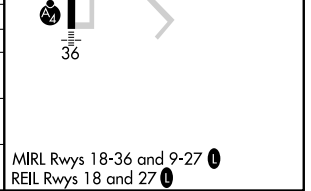


SC-1, 02 DEC 2021 to 30 DEC 2021

SC-1, 02 DEC 2021 to 30 DEC 2021



CATEGORY	A	B	C	D
LPV DA	474-1 250 (300-1)			
LNAV/VNAV DA	520-¾	296 (300-¾)	520-1 296 (300-1)	
LNAV MDA	620-¾	396 (400-¾)	620-1¼ 396 (400-1¼)	
CIRCLING	660-1 436 (500-1)	680-1 456 (500-1)	760-1½ 536 (600-1½)	860-2 636 (700-2)



MIRL Rwy 18-36 and 9-27 0
REL Rwy 18 and 27 0