

APP CRS **090°**  
 Rwy Idg **5002**  
 TDZE **222**  
 Apt Elev **224**

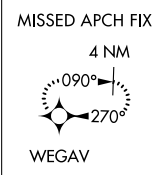
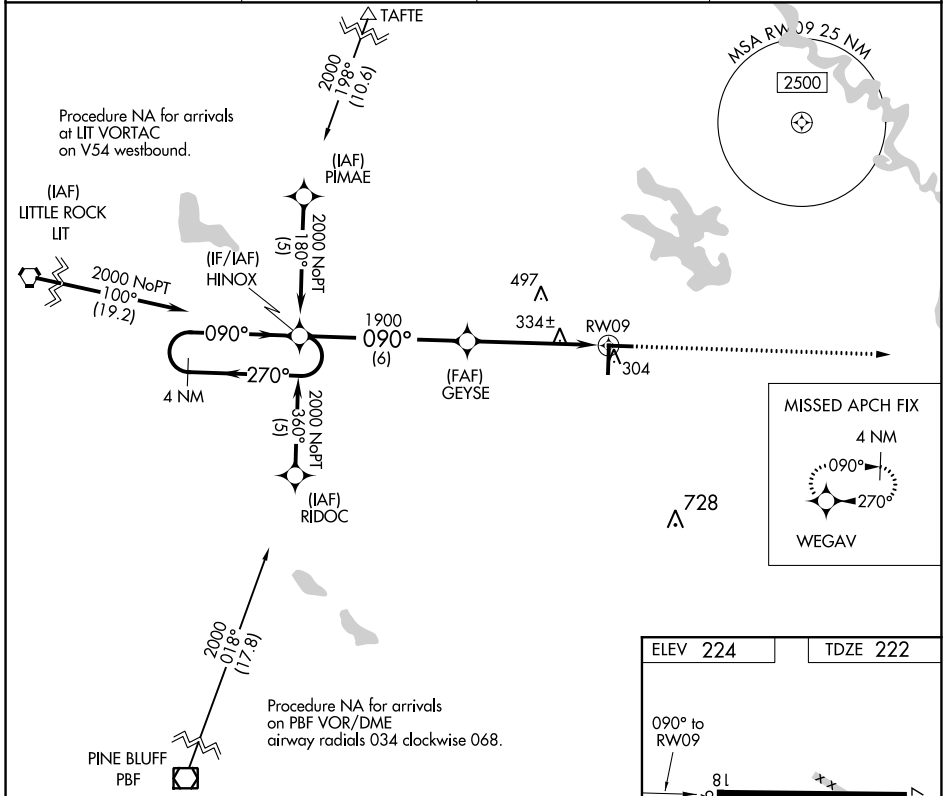
**RNAV (GPS) RWY 9**  
 STUTTGART MUNI CARL HUMPHREY FLD (SGT)

RNP APCH-GPS.

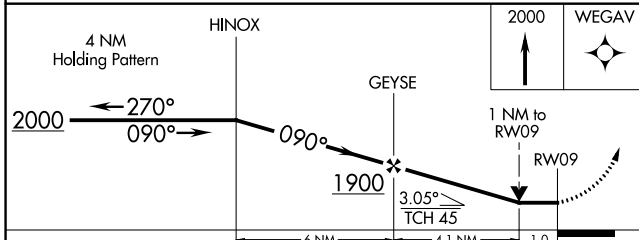
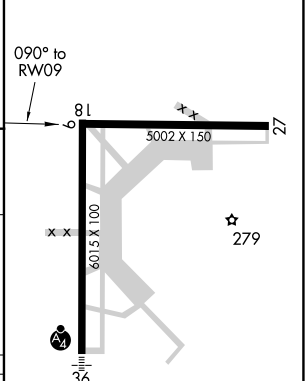
▼ When local altimeter setting not received, use Bill and Hillary Clinton Nil/Adams Fld altimeter setting and increase all MDAs 100 feet and visibility Cats C and D ¼ SM.  
 ▲ VDP NA when using Bill and Hillary Clinton National/Adams Fld altimeter setting.

MISSED APPROACH: Climb to 2000 direct WEGAV and hold.

AWOS-3PT <b>119.025</b>	LITTLE ROCK APP CON <b>135.4 353.6</b>	CLNC DEL <b>123.7</b>	UNICOM <b>122.8 (CTAF) 0</b>
----------------------------	---	--------------------------	---------------------------------



ELEV 224 TDZE 222



CATEGORY	A	B	C	D
LNVA MDA		600-1	378 (400-1)	600-1¼ 378 (400-1¼)
CIRCLING	660-1 436 (500-1)	680-1 456 (500-1)	760-1½ 536 (600-1½)	860-2 636 (700-2)

MIRL Rwy 18-36 and 9-27 0  
 REIL Rwy 18 and 27 0

SC-1, 02 DEC 2021 to 30 DEC 2021

SC-1, 02 DEC 2021 to 30 DEC 2021