

FORT LEWIS, WASHINGTON

ILS or LOC RWY 15

| | | | |
|---|-------------------------|--|---|
| LOC I-GRF 108.3 Chan 20 | APCH CRS 151° | Rwy Idg TDZE Arprt Elev 6124 300 301 | AL-413 [USA] GRAY AAF (JOINT BASE LEWIS MCCHORD) (KGRF) |
|---|-------------------------|--|---|

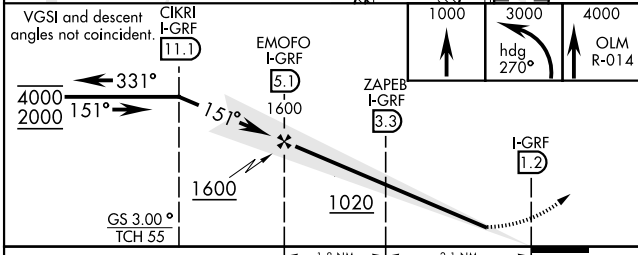
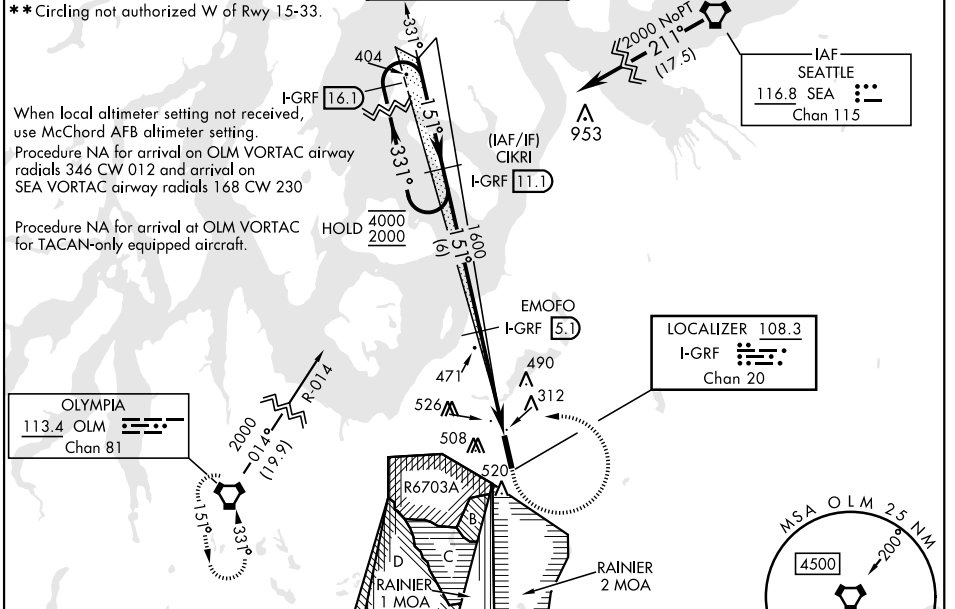
RNAV1 - GPS from SEA VORTAC.

DME required for civil use. For non-RNAV aircraft, RADAR required from SEA VORTAC.

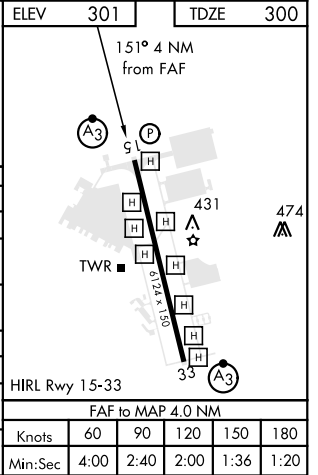
SSALR MISSED APPROACH: Climb to 1000, then climbing left turn to 3000 on hdg 270° and OLM VORTAC R-014, then continue climb to 4000 on OLM R-014 to OLM and hold.

*When ALS inop when using McChord AFB altimeter setting, increase LOC CAT C/D vis to RVR 55.

| | | | | | |
|-----------------------|---------------------------------|---|--------------------------------------|---------------------------------------|-----|
| ATIS 124.65 | SEATTLE APP CON 306.2 | TOWER ★ 119.325 (CTAF) 256.8 | GND CON 121.9 290.2 | CLNC DEL 121.9 290.2 | PAR |
|-----------------------|---------------------------------|---|--------------------------------------|---------------------------------------|-----|



| | | | | |
|--|--------|-------------|------------------------|----------------------|
| CATEGORY | A | B | C | D |
| S-ILS 15 | 500/24 | | 200 | (200-½) |
| S-LOC 15 | 640/24 | 340 (400-½) | 640/26 | 340 (400-½) |
| CIRCLING ** | 840-1 | 539 (600-1) | 840-1½ 539 (600-1½) | 920-2 619 (700-2) |
| McCHORD FLD ALTIMETER SETTING MINIMUMS | | | | |
| S-ILS 15 | 516/24 | | 216 | (300-½) |
| S-LOC 15* | 660/24 | 360 (400-½) | 660/35 | 360 (400-¾) |
| CIRCLING ** | 860-1 | 559 (600-1) | 860-1½ 559 (600-1½) | 940-2 639 (700-2) |



FORT LEWIS, WASHINGTON 47°05'N-122°35'W GRAY AAF (JOINT BASE LEWIS MCCHORD) (KGRF)

Amdt 8A 05DEC19

ILS or LOC RWY 15

NW-1, 02 DEC 2021 to 30 DEC 2021

NW-1, 02 DEC 2021 to 30 DEC 2021