

FORT LEWIS, WASHINGTON

RNAV (GPS) RWY 15

APCH CRS	Rwy Idg	6124
151°	TDZE	300
	Arpt Elev	301

AL-413 (USA)

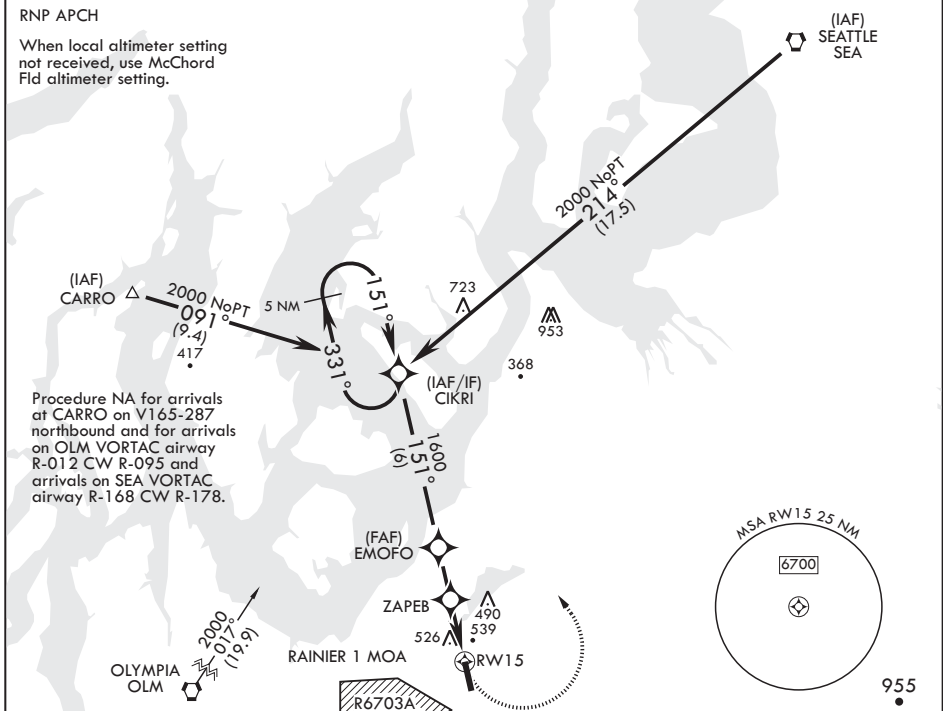
GRAY AAF (JOINT BASE LEWIS MCCHORD) (KGRF)

* Circling not authorized W of Rwy 15-33.

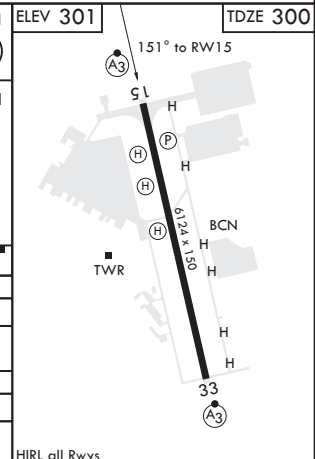
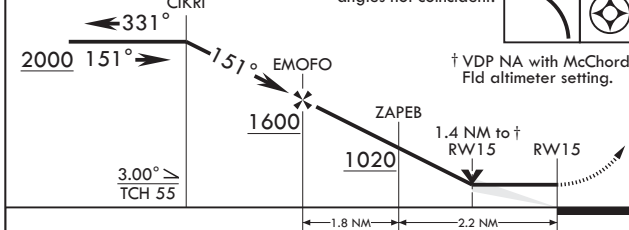


MISSED APPROACH: Climbing left turn to 2000 direct CIKRI and hold.

ATIS 124.65 306.2	SEATTLE APP CON/DEP CON 120.1 290.9	TOWER * 119.325 (CTAF) 256.8	GND CON 121.9 290.2	CLNC DEL 121.9 290.2	PAR
----------------------	--	---------------------------------	------------------------	-------------------------	-----



VGSI and descent angles not coincident.	2000	CIKRI	ELEV 301	TDZE 300
---	------	-------	----------	----------



CATEGORY	A	B	C	D
LNAV MDA	800/24 500	(500-½)	800/50 500	(500-1)
C CIRCLING*	840-1 539	(600-1)	840-1½ 539	(600-1½) 920-2 619
MC CHORD FLD ALTIMETER SETTING MINIMUMS				
LNAV MDA	820/24	520	(600-½)	
C CIRCLING*	860-1 559	(600-1)	860-1½ 559	(600-1½) 940-2 639

FORT LEWIS, WASHINGTON

47°05'N - 122°35'W GRAY AAF (JOINT BASE LEWIS MCCHORD) (KGRF)

Amdt 2 10OCT19

RNAV (GPS) RWY 15

NW-1, 02 DEC 2021 to 30 DEC 2021

NW-1, 02 DEC 2021 to 30 DEC 2021