

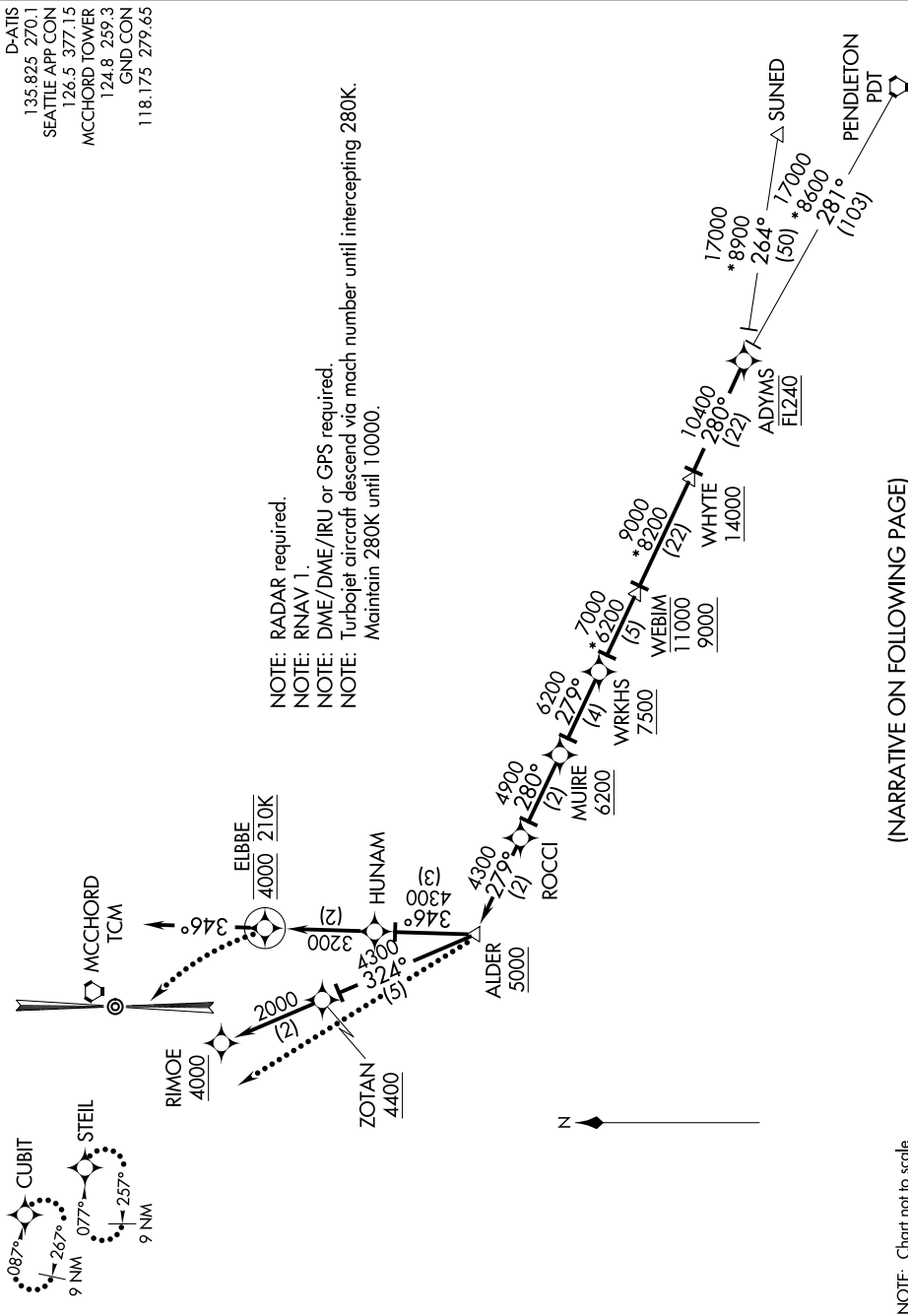
(ADYMS.ADYMS2) 21112

ADYMS TWO ARRIVAL (RNAV)

MCCHORD FLD (JOINT BASE LEWIS-MCCHORD) (KTCM)
AL-414 (FAA) TACOMA, WASHINGTON

D-ATIS
135.825 270.1
SEATTLE APP CON
126.5 377.15
MCCHORD TOWER
124.8 259.3
GND CON
118.175 279.65

NOTE: RADAR required.
NOTE: RNAV 1.
NOTE: DME/DME/IRU or GPS required.
NOTE: Turbojet aircraft descend via mach number until intercepting 280K.
NOTE: Maintain 280K until 10000.



(NARRATIVE ON FOLLOWING PAGE)

NOTE: Chart not to scale.

NW-1, 02 DEC 2021 to 30 DEC 2021

NW-1, 02 DEC 2021 to 30 DEC 2021

ADYMS TWO ARRIVAL (RNAV)
(ADYMS.ADYMS2) 15OCT15

TACOMA, WASHINGTON
MCCHORD FLD (JOINT BASE LEWIS-MCCHORD) (KTCM)