

# MOCAA THREE DEPARTURE (RNAV)

NW-1, 02 DEC 2021 to 30 DEC 2021

**DEPARTURE ROUTE DESCRIPTION**

**TAKEOFF RUNWAY 16:** Climb heading 165° to 3000, then left turn direct to cross ALDER at or above 5800 and at or below 9000, then on track 111° to MOCAA, thence . . . . .

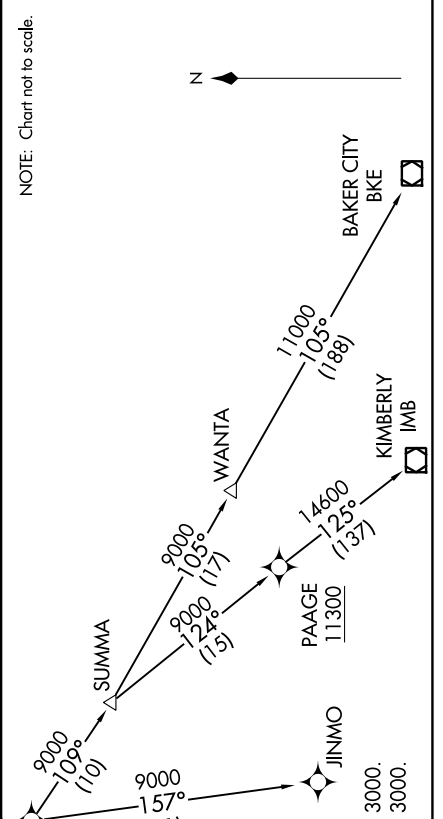
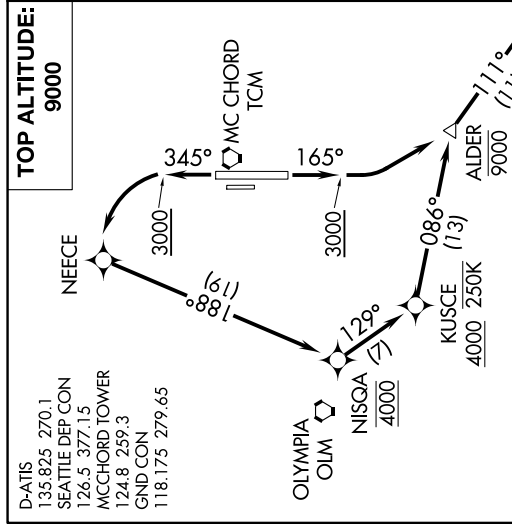
**TAKEOFF RUNWAY 34:** Climb heading 345° to 3000, then left turn direct NEECE, then on track 188° to cross NISQA at 4000, then on track 129° to cross KUSCE at or above 4000 and at or below 250K, then on track 086° to cross ALDER at or above 5800 and at or below 9000, then on track 111° to MOCAA, thence . . . . .

. . . . . (transition). Maintain 9000, expect filed altitude five minutes after departure.

**BAKER CITY TRANSITION (MOCAA3.BKE)**

**JINMO TRANSITION (MOCAA3.JINMO)**

**KIMBERLY TRANSITION (MOCAA3.IMB)**



- D-ATIS 135.825 270.1
- SEATTLE DEP CON 126.5 377.15
- MCCHORD TOWER 124.8 259.3
- GND CON 118.175 279.65

NOTE: RNAV 1.  
NOTE: GPS required.

**TAKEOFF MINIMUMS**  
Rwy 16: Standard with minimum climb of 500' per NM to 3000.  
Rwy 34: Standard with minimum climb of 500' per NM to 3000.

NW-1, 02 DEC 2021 to 30 DEC 2021

# MOCAA THREE DEPARTURE (RNAV)