

OLYMPIC-FOUR DEPARTURE

AL-414 [USAF]

MCCHORD FLD (KTCM)

TACOMA, WASHINGTON

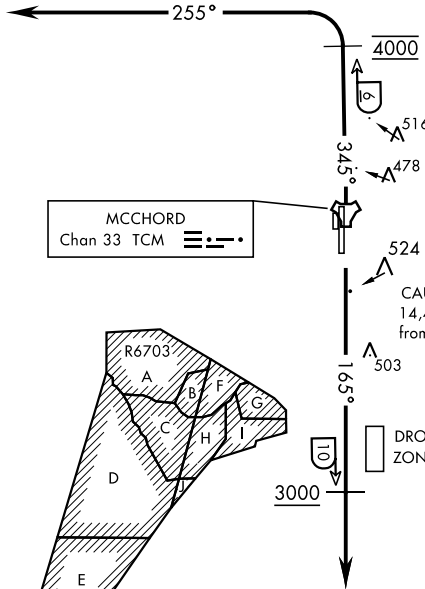
ATIS
 135.825 270.1
 GND CON
 118.175 279.65
 TOWER
 124.8 259.3
 SEATTLE DEP CON
 126.5 377.15

If unable to make ATC charted crossing restrictions advise ATC prior to departure.

Maximum 250 KIAS

SEATTLE
 116.8 SEA
 Chan 115

L-1



MCCHORD
 Chan 33 TCM

OLYMPIA
 113.4 OLM
 Chan 81

L-1

CAUTION: Mountains to 14,411 ft 103° 34 NM from McCord.

① 2270' from Rwy 34

NW-1, 02 DEC 2021 to 30 DEC 2021

NW-1, 02 DEC 2021 to 30 DEC 2021

RADAR REQUIRED



DEPARTURE ROUTE DESCRIPTION

TAKEOFF RWY 16: Climb on track of 165° to cross TCM TACAN 10 DME at or above 3000. Expect radar vectors within TCM 8 DME. Maintain ATC assigned altitude.

TAKEOFF RWY 34: Climb on track 345° to cross TCM TACAN 6 DME at 4000. Then turn left tracking 255° to expect radar vectors. Maintain ATC assigned altitude.

OLYMPIC-FOUR DEPARTURE

TACOMA, WASHINGTON
 MCCHORD FLD (KTCM)