

TACAN RWY 16

TACAN TCM Chan 33	APCH CRS 160°	Rwy ldg 10,108 TDZE 286 Arprt Elev 322
--------------------------	----------------------	---

AL-414 [USAF]

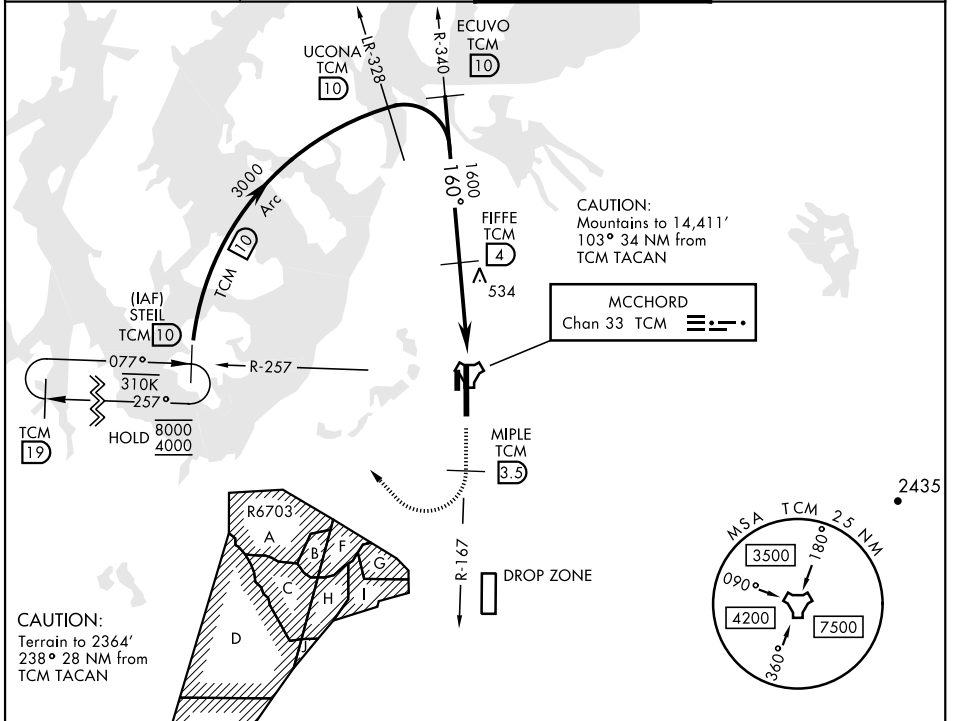
MCCHORD FLD (KTCM)

▼ * When ALS inop, increase CAT AB RVR to 55, vis to 1 mile, CAT CDE vis to 1½ miles.
 ** Circling not authorized E of Rwy 16-34.

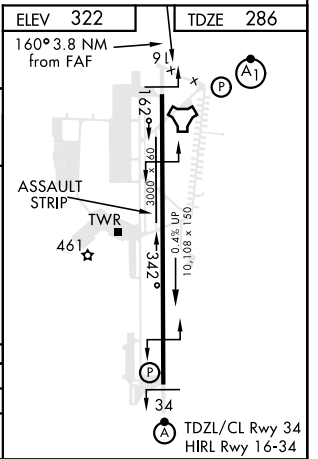
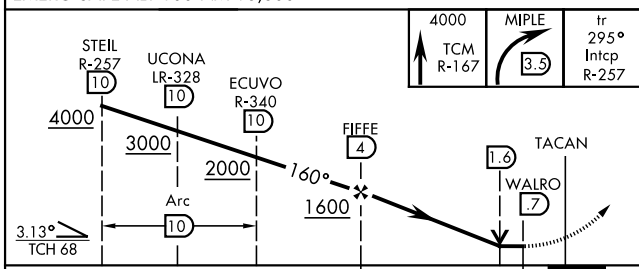
 ALSF-1
A1

 MISSED APPROACH: Climb to 4000 on TCM TACAN R-167. At TCM 3.5 DME turn right via 295° course to intercept TCM R-257 to STEIL and hold, continue climb in hold to 4000.

ATIS 135.825 270.1	SEATTLE APP CON 126.5 377.15	TOWER 124.8 259.3	GND CON 118.175 279.65
------------------------------	--	-----------------------------	----------------------------------



EMERG SAFE ALT 100 NM 16,600	<table border="1" style="width: 100%;"> <tr> <td>ELEV 322</td> <td>TDZE 286</td> </tr> <tr> <td>160° 3.8 NM from FAF</td> <td>A1</td> </tr> </table>	ELEV 322	TDZE 286	160° 3.8 NM from FAF	A1
ELEV 322	TDZE 286				
160° 3.8 NM from FAF	A1				



CATEGORY	A	B	C	D	E
S-16 *	800/24	514 (500-½)	800/55	514	(500-1)
CIRCLING **	940-1 618 (700-1)	940-1¾ 618 (700-1¾)	940-2 618 (700-2)	1020-2½ 698 (700-2½)	

TACAN RWY 16

NW-1, 02 DEC 2021 to 30 DEC 2021

NW-1, 02 DEC 2021 to 30 DEC 2021