

TACOMA, WASHINGTON

# TACAN RWY 34

TACAN TCM Chan <b>33</b>	APCH CRS <b>347°</b>	Rwy Ildg <b>10,108</b> TDZE <b>322</b> Arprt Elev <b>322</b>
--------------------------	----------------------	--

AL-414 [USAF]

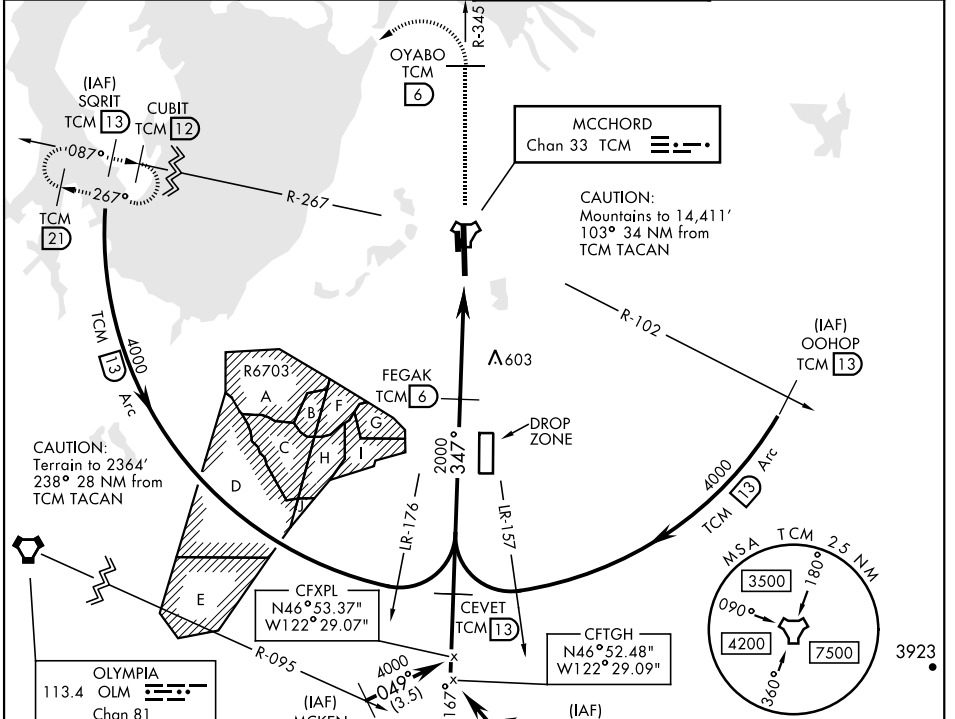
MCCHORD FLD (KTCM)

▲ \* When ALS inop, increase CAT AB RVR to 55, vis to 1 mile, CAT CD vis to 1½ miles.  
 \*\* Circling not authorized E of Rwy 16-34.

ALSF-2

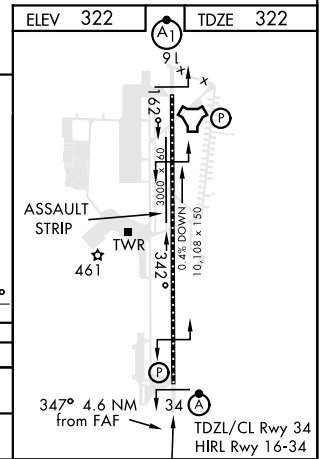
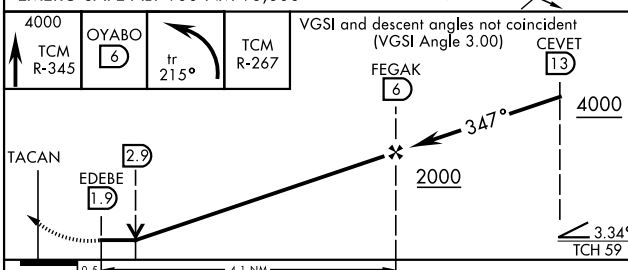
MISSED APPROACH: Climb to 4000 on TCM TACAN R-345 to OYABO, then turn left via 215° course to intercept TCM R-267 to CUBIT and hold. Cross OYABO at or above 3000. Continue climb in hold to 4000.

ATIS <b>135.825 270.1</b>	SEATTLE APP CON <b>126.5 377.15</b>	TOWER <b>124.8 259.3</b>	GND CON <b>118.175 279.65</b>
------------------------------	--	-----------------------------	----------------------------------



ELEV 322	TDZE 322
----------	----------

EMERG SAFE ALT 100 NM 16,600



CATEGORY	A	B	C	D
S-34 *	860/24 538 (600-½)		860/55 538 (600-1)	
CIRCLING **	940-1 618 (700-1)		940-1½ 618 (700-1½)	940-2 618 (700-2)

TACOMA, WASHINGTON

47°08'N-122°29'W

MCCHORD FLD (KTCM)

Amtd 4 10SEP20

# TACAN RWY 34

NW-1, 02 DEC 2021 to 30 DEC 2021

NW-1, 02 DEC 2021 to 30 DEC 2021