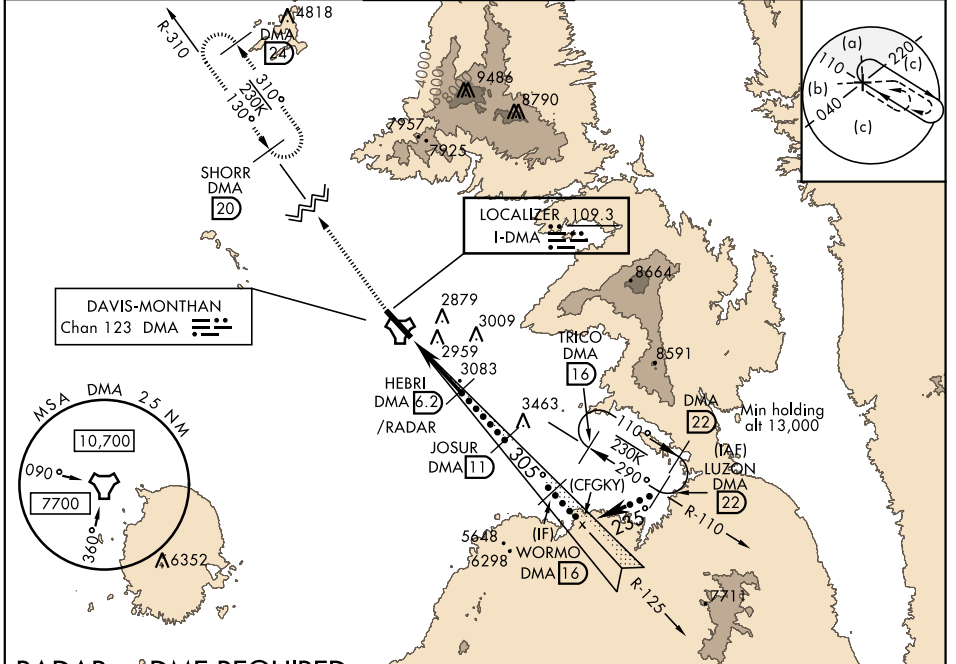


# HI-ILS or LOC Z RWY 30

LOC I-DMA <b>109.3</b>	APCH CRS <b>305°</b>	Rwy ldg <b>13,643</b> TDZE <b>2704</b> Arprt Elev <b>2704</b>	JAL-429 [USAF]	DAVIS-MONTHAN AFB (KDMA)
---------------------------	-------------------------	---	----------------	--------------------------

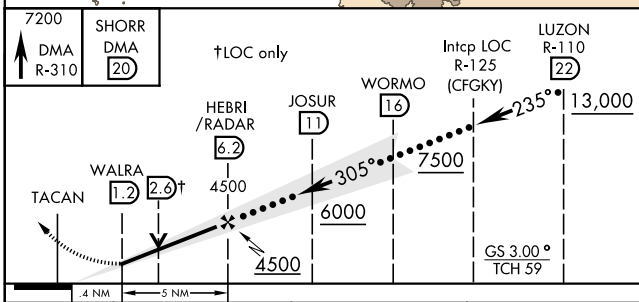
<p>▼ * When ALS inop, increase vis to 1 3/4 miles. ** Circling not authorized S of Rwy 12-30.</p>	<p>ALSF-1 A1</p>	<p>MISSED APPROACH: Climb to 7200, intercept DMA TACAN R-310 to SHORR and hold.</p>
---	----------------------	---

<p>ATIS ★ <b>270.1</b></p>	<p>TUCSON APP CON 066°-274° <b>119.4 318.1</b> 275°-065° <b>125.1 269.55</b></p>	<p>DAVIS-MONTHAN TOWER <b>118.85 253.5</b></p>	<p>GND CON <b>121.8 275.8</b></p>	<p>CLNC DEL <b>121.8 275.8</b></p>
--------------------------------	--	--	---------------------------------------	--

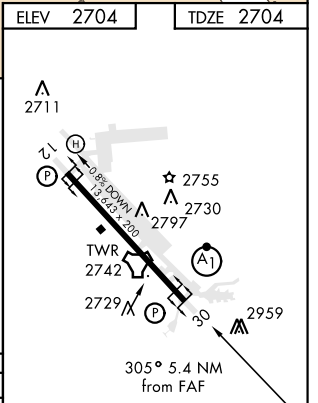


## RADAR or DME REQUIRED

EMERG SAFE ALT 100 NM 17,200



CATEGORY	C	D	E
S-ILS 30	2954/40	250	(300-3/4)
S-LOC 30 *	3340-1 3/4	636	(700-1 3/4)
CIRCLING **	3340-1 3/4 636 (700-1 3/4)	3360-2 656 (700-2)	3440-2 1/2 736 (800-2 1/2)



FAF to MAP 5 NM					
Knots	120	140	160	180	200
Min:Sec	2:30	2:09	1:53	1:40	1:30

# HI-ILS or LOC Z RWY 30

SW-4, 02 DEC 2021 to 30 DEC 2021

SW-4, 02 DEC 2021 to 30 DEC 2021