

HI-TACAN Z RWY 30

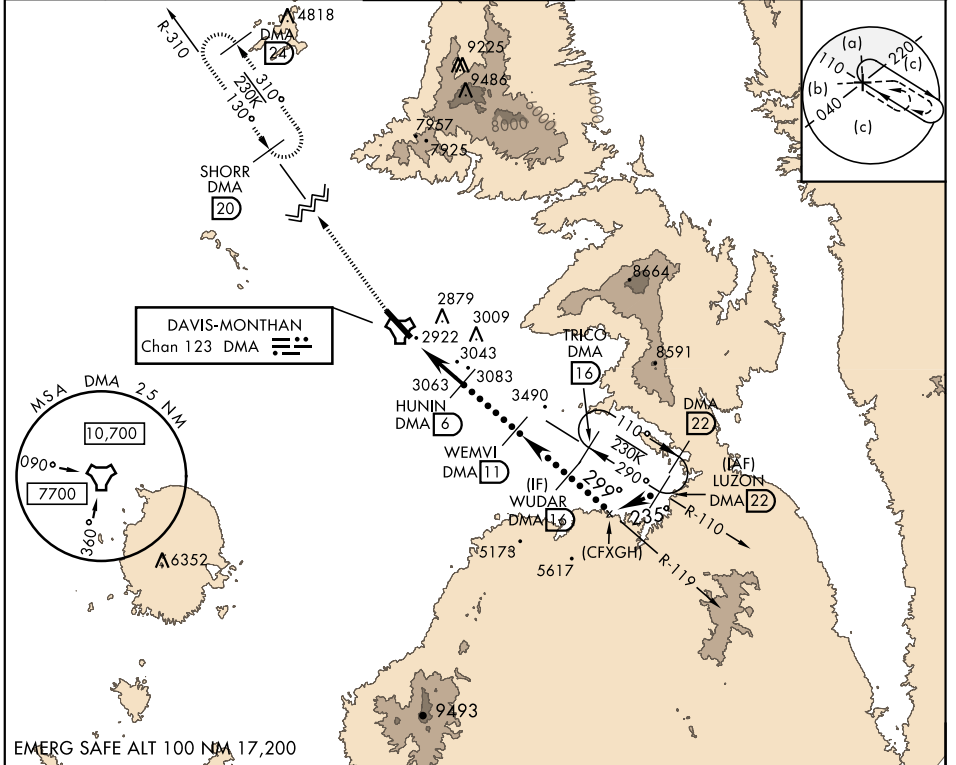
TACAN DMA Chan 123	APCH CRS 299°	Rwy Ldg 13,643 TDZE 2704 Arprt Elev 2704
------------------------------	-------------------------	---

JAL-429 [USAF]

DAVIS-MONTHAN AFB (KDMA)

<p>▼ * When ALS inop, increase vis to 1 1/4 miles. ** Circling not authorized S of Rwy 12-30.</p>	<p>ALSF-1 (A1)</p>	<p>MISSED APPROACH: Climb to 7200, intercept DMA TACAN R-310 to SHORR and hold.</p>
---	------------------------	---

<p>ATIS ★ 270.1</p>	<p>TUCSON APP CON 066°-274° 119.4 318.1 275°-065° 125.1 269.55</p>	<p>DAVIS-MONTHAN TOWER 118.85 253.5</p>	<p>GND CON 121.8 275.8</p>	<p>CLNC DEL 121.8 275.8</p>
--------------------------------	--	--	---------------------------------------	--



7200 DMA R-310	SHORR DMA 20	ELEV 2704	TDZE 2704
CATEGORY	C	D	E
S-30 *	3340-1 3/4	636 (700-1 3/4)	636 (700-1 3/4)
CIRCLING **	3340-1 3/4 636 (700-1 3/4)	3360-2 656 (700-2)	3440-2 1/2 736 (800-2 1/2)
<p>HIRL Rwy 12-30 REIL Rwy 12</p> <p>299° to TACAN</p>			

HI-TACAN Z RWY 30

SW-4, 02 DEC 2021 to 30 DEC 2021

SW-4, 02 DEC 2021 to 30 DEC 2021