

# ILS or LOC Y RWY 12

LOC I-APB <b>109.3</b>	APCH CRS <b>125°</b>	Rwy Ldg <b>13,643</b> TDZE <b>2615</b> Arprt Elev <b>2704</b>
---------------------------	-------------------------	---

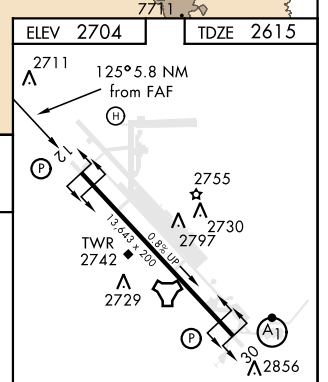
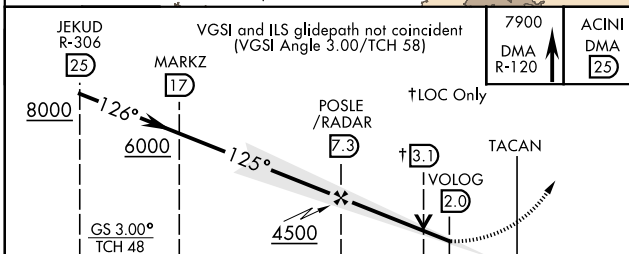
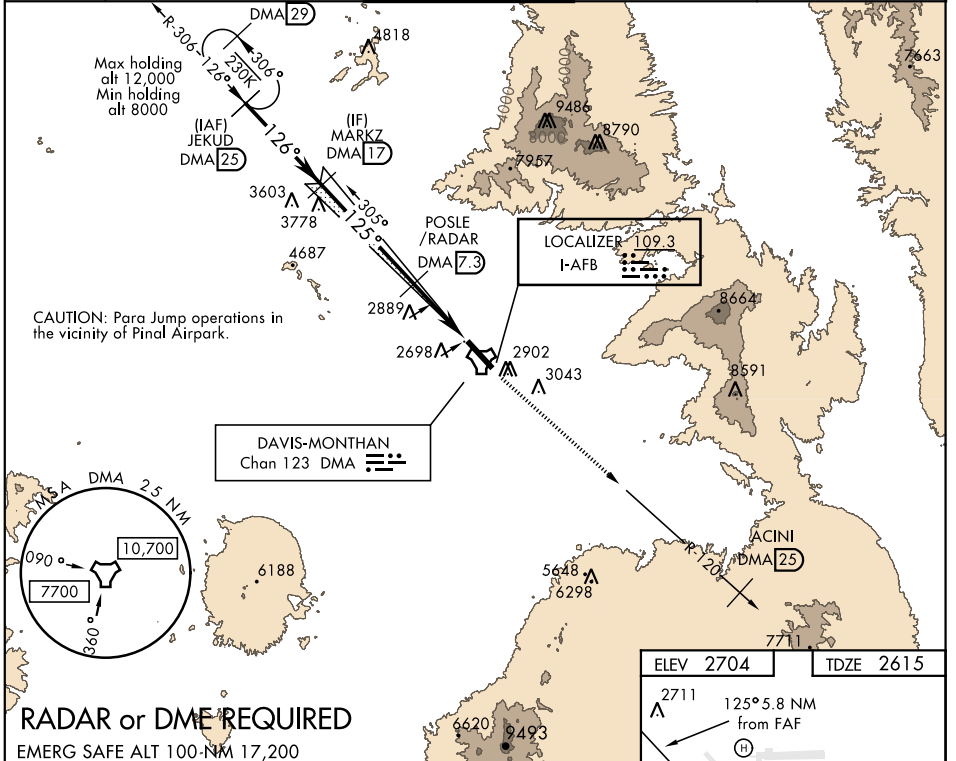
AL-429 [USAF]

DAVIS-MONTHAN AFB (KDMA)

**\* Circling not authorized S of Rwy 12-30.**

MISSED APPROACH: Climbing to 7900 intercept DMA TACAN R-120 to ACINI. Expect RADAR vectors.

ATIS★ <b>270.1</b>	TUCSON APP CON 066°-274° <b>119.4 318.1</b> 275°-065° <b>125.1 269.55</b>	DAVIS-MONTHAN TOWER <b>118.85 253.5</b>	GND CON <b>121.8 275.8</b>	CLNC DEL <b>121.8 275.8</b>
-----------------------	---	--	-------------------------------	--------------------------------



CATEGORY	A	B	C	D	E	REIL Rwy 12 HIRL Rwy 12-30
	2865/40 250 (200-¾)					
S-ILS 12	2865/40 250 (200-¾)					FAF to MAP 5.3 NM
S-LOC 12	3160/55	545 (500-1)	3160-1½	545 (500-1½)		
*CIRCLING	3220-1	3240-1	3320-1¾	3360-2	3440-2½	Knots 60 90 120 150 180 Min:Sec 5:18 3:32 2:39 2:07 1:46
	516 (600-1)	536 (600-1)	616 (700-1¾)	656 (700-2)	736(800-2½)	

TUCSON, ARIZONA 32°10'N-110°53'W DAVIS-MONTHAN AFB (KDMA)

Amdt 1 28MAR19

# ILS or LOC Y RWY 12

SW-4, 02 DEC 2021 to 30 DEC 2021

SW-4, 02 DEC 2021 to 30 DEC 2021