

TUCSON, ARIZONA

# RNAV (GPS) RWY 30

WAAS CH <b>91450</b> W30A	APCH CRS <b>305°</b>	Rwy ldg TDZE Arprt Elev	<b>13,643</b> <b>2704</b> <b>2704</b>
---------------------------------	-------------------------	-------------------------------	---

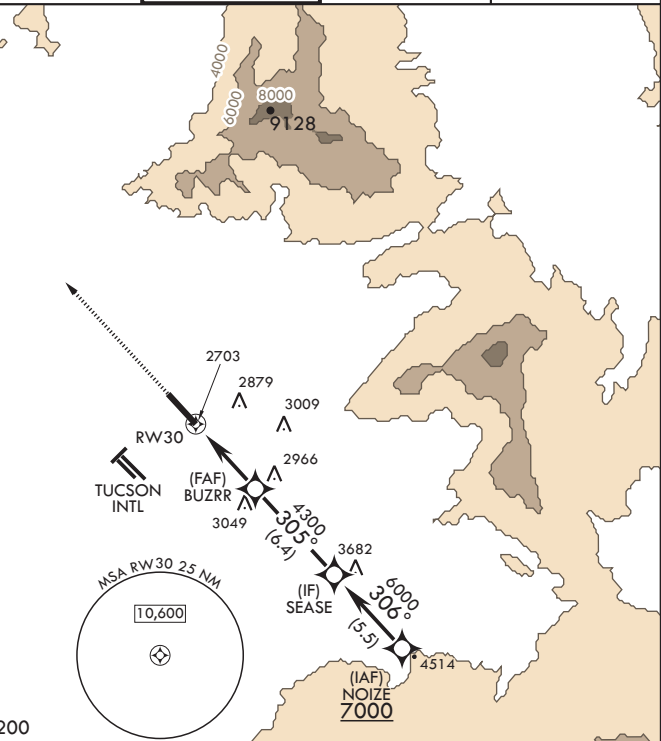
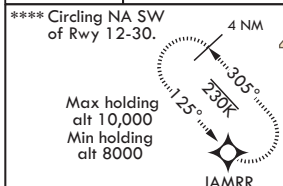
AL-429 (USAF)

DAVIS MONTHAN AFB (KDMA)

**V** \* When ALS inop increase vis to 1 3/8 miles.  
 \*\* When ALS inop, increase RVR to 60, vis to 1 1/8 miles.  
 \*\*\* When ALS inop, increase CAT AB RVR to 55, vis to 1 mile; CAT CDE vis to 1 5/8 miles.

ALSF-1 MISSED APPROACH: Climb to 8000 direct JAMRR and hold, continue climb-in-hold to 8000.

ATIS* <b>270.1</b>	TUCSON APP CON/DEP CON <b>119.4 269.55</b>	TOWER <b>118.85 253.5</b>	GND CON <b>121.8 275.8</b>	CLNC DEL <b>121.8 275.8</b>
-----------------------	---	------------------------------	-------------------------------	--------------------------------



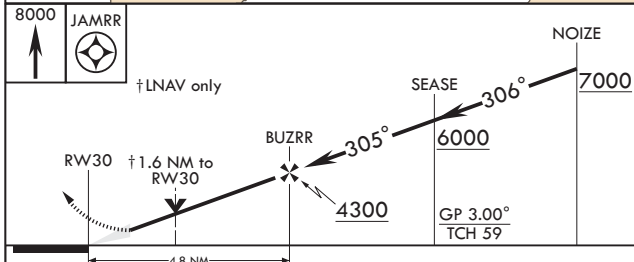
RNP APCH

Average Cold Temperature based on Standard -30.00 °C ISA deviation.

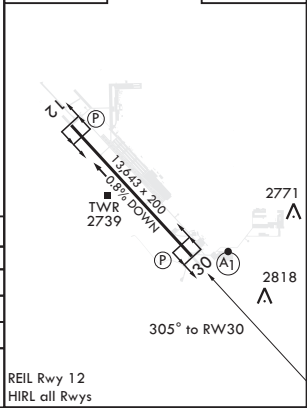
For uncompensated Baro-VNAV systems, LNAV/VNAV NA below 5°C or above 54°C.

CAUTION: Para Jump operations in vicinity of Pinal Airport.

EMERG SAFE ALT 100 NM 17,200



ELEV 2704	TDZE 2704
-----------	-----------



CATEGORY	A	B	C	D	E
LPV DA*	3168/50		464	(500-1)	
LNAV/VNAV DA**	3109/40		405	(500-3/4)	
LNAV MDA***	3280/24 576 (600-1/2)		3280-1 1/4	576 (600-1 1/4)	
<b>C</b> CIRCLING****	3280-1 576 (600-1)		3320-1 3/4 616 (700-1 3/4)	3320-2 616 (700-2)	3440-2 1/2 736 (800-2 1/2)

TUCSON, ARIZONA  
Orig 10SEP20

32°10'N - 110°53'W

DAVIS MONTHAN AFB (KDMA)

# RNAV (GPS) RWY 30

SW-4, 02 DEC 2021 to 30 DEC 2021

SW-4, 02 DEC 2021 to 30 DEC 2021