

TACAN Y RWY 30

DAVIS-MONTHAN AFB (KDMA)

TACAN DMA Chan 123	APCH CRS 299°	Rwy ldg 13,643 TDZE 2704 Arprt Elev 2704
-----------------------	------------------	--

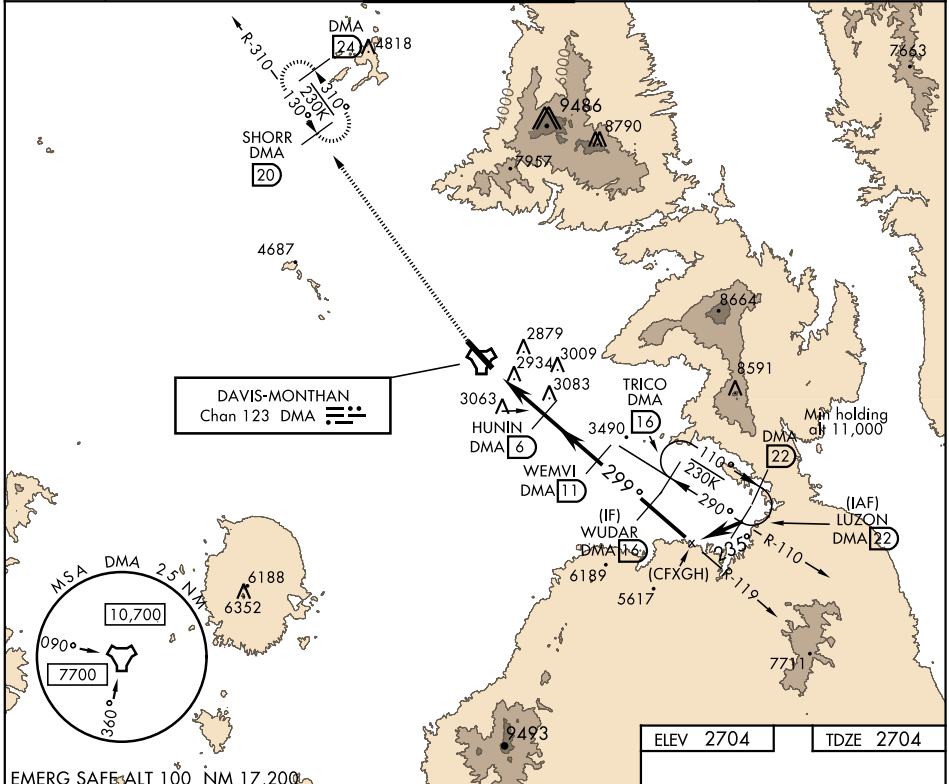
AL-429 [USAF]

▼ * When ALS inop, increase CAT AB RVR to 55, CAT CDE vis to 1 1/4 miles.
** Circling not authorized S of Rwy 12-30.

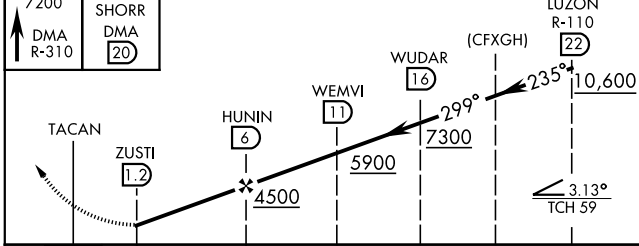


MISSED APPROACH: Climb to 7200, intercept DMA TACAN R-310 to SHORR and hold.

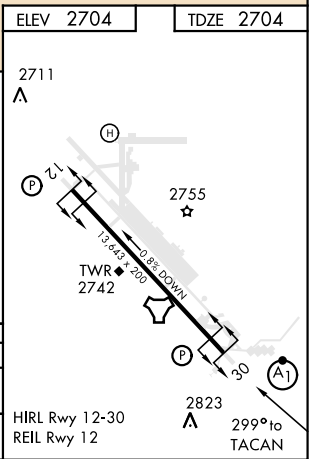
ATIS★ 270.1	TUCSON APP CON 066°-274° 119.4 318.1 275°-065° 125.1 269.55	DAVIS-MONTHAN TOWER 118.85 253.5	GND CON 121.8 275.8	CLNC DEL 121.8 275.8
----------------	---	-------------------------------------	------------------------	-------------------------



EMERG SAFE: ALT 100 NM 17,200



CATEGORY	A	B	C	D	E
S-30 *	3340/50	636 (700-1)	3340-1 1/8 636 (700-1 1/8)		
CIRCLING **	3340-1	636 (700-1)	3340-1 1/4 636 (700-1 1/4)	3360-2 656 (700-2)	3440-2 1/2 736 (800-2 1/2)



TACAN Y RWY 30

SW-4, 02 DEC 2021 to 30 DEC 2021

SW-4, 02 DEC 2021 to 30 DEC 2021