

LOC/DME I-TUS 111.7 Chan 54	APP CRS 123°	Rwy Idg 10996 TDZE 2599 Apt Elev 2643
---	------------------------	--

ILS or LOC RWY 11L

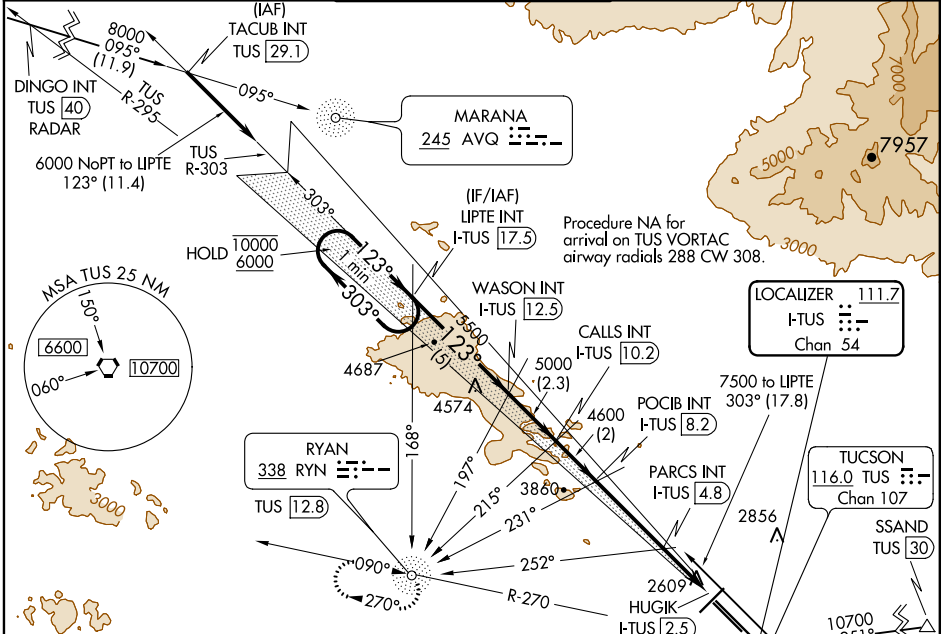
TUCSON INTL (TUS)

ADF or RADAR required for arrivals at DINGO.
ADF or DME required.
DME required for arrivals at SSAND.

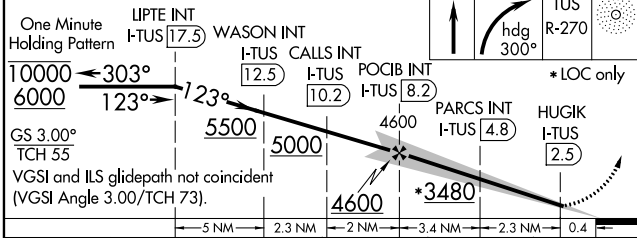
MALS R MISSED APPROACH: Climb to 4000 then climbing right turn to 6000 on heading 300° and TUS VORTAC R-270 to RYN NDB/TUS 12.8 DME and hold.

For inop ALS, increase S-ILS Cat E visibility to RVR 4000, S-LOC 11L Cat E visibility to 2½ SM; PARCS FIX MINIMUMS: S-LOC 11L Cat C/D/E visibility to RVR 5500.

ATIS 123.8 279.65	TUCSON APP CON 119.4 318.1	TUCSON TOWER 118.3 257.8	GND CON 124.4 348.6	CLNC DEL 126.65 326.2
-----------------------------	--------------------------------------	------------------------------------	-------------------------------	---------------------------------

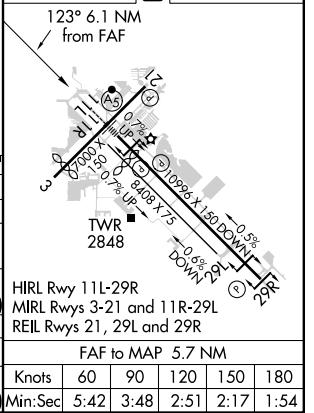


Use I-TUS DME when on the localizer course.



ELEV 2643	TDZE 2599
-----------	-----------

CATEGORY	A	B	C	D	E
S-ILS 11L	2800/24 201 (200-½)				
S-LOC 11L	3480/40	881 (900-¾)	3480-2	881 (900-2)	
CIRCLING	3480-1¼	837 (900-1¼)	3480-2½	3660-3	3920-3
PARCS FIX MINIMUMS					
S-LOC 11L	2960/24	361 (400-½)	2960/40	361 (400-¾)	
CIRCLING	3160-1	3220-1	3220-1½	3660-3	3920-3
	517 (600-1)	577 (600-1)	577 (600-1½)	1017 (1100-3)	277 (1300-3)



SW-4, 02 DEC 2021 to 30 DEC 2021

SW-4, 02 DEC 2021 to 30 DEC 2021