

LOC/DME I-TUS <b>111.7</b> Chan <b>54</b>	APP CRS <b>303°</b>	Rwy Idg TDZE <b>10996</b> <b>2643</b> Apt Elev <b>2643</b>
---	------------------------	---

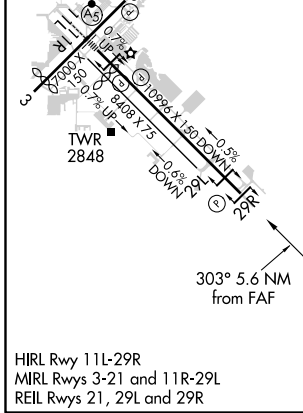
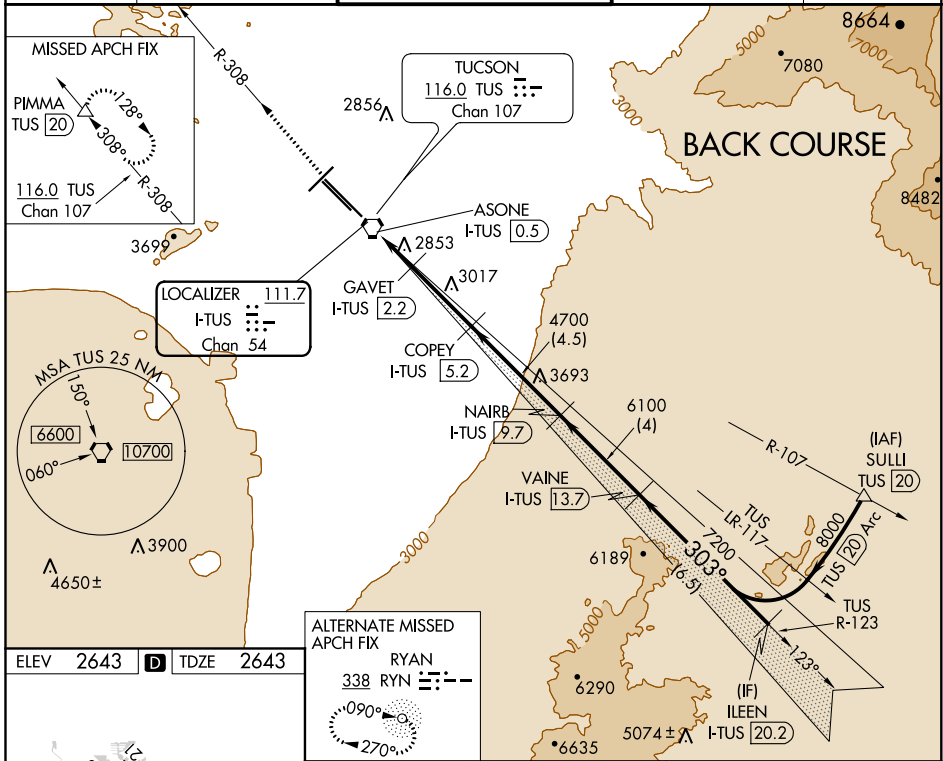
# LOC BC RWY 29R

TUCSON INTL (TUS)

DME required for procedure entry. DME required.

MISSED APPROACH: Climb to 6800 on TUS VORTAC R-308 to PIMMA/TUS VORTAC 20 DME and hold.

ATIS <b>123.8 279.65</b>	TUCSON APP CON <b>119.4 318.1</b>	TUCSON TOWER <b>118.3 257.8</b>	GND CON <b>124.4 348.6</b>	CLNC DEL <b>126.65 326.2</b>
-----------------------------	--------------------------------------	------------------------------------	-------------------------------	---------------------------------



ELEV 2643	D	TDZE 2643
RYAN 338 RYN	RYAN 338 RYN	RYAN 338 RYN
6800 TUS R-308	PIMMA △	Use I-TUS DME when on the localizer course. VGSIs and descent angles not coincident (VGSi Angle 3.00/TCH 81). Disregard glide slope indications.
ASONE I-TUS 0.5	GAVET I-TUS 2.2	COPEY I-TUS 5.2
NAIRB I-TUS 9.7	VAINE I-TUS 13.7	ILEEN I-TUS 20.2
3640	4700	6100
303°	7200	8000
0.9	1.7	3
4.5	4	6.5

CATEGORY	A	B	C	D	E
S-29R	3140-1	497 (500-1)	3140-1 <sup>3</sup> / <sub>8</sub>	497 (500-1 <sup>3</sup> / <sub>8</sub> )	
CIRCLING	3160-1	3220-1	3220-1 <sup>1</sup> / <sub>2</sub>	3660-3	3920-3
	517 (600-1)	577 (600-1)	577 (600-1 <sup>1</sup> / <sub>2</sub> )	1017 (1100-3)	1277 (1300-3)

SW-4, 02 DEC 2021 to 30 DEC 2021

SW-4, 02 DEC 2021 to 30 DEC 2021