

WLDKT THREE DEPARTURE (RNAV)

AL-430 (FAA)

TUCSON INTL (TUS)
TUCSON, ARIZONA

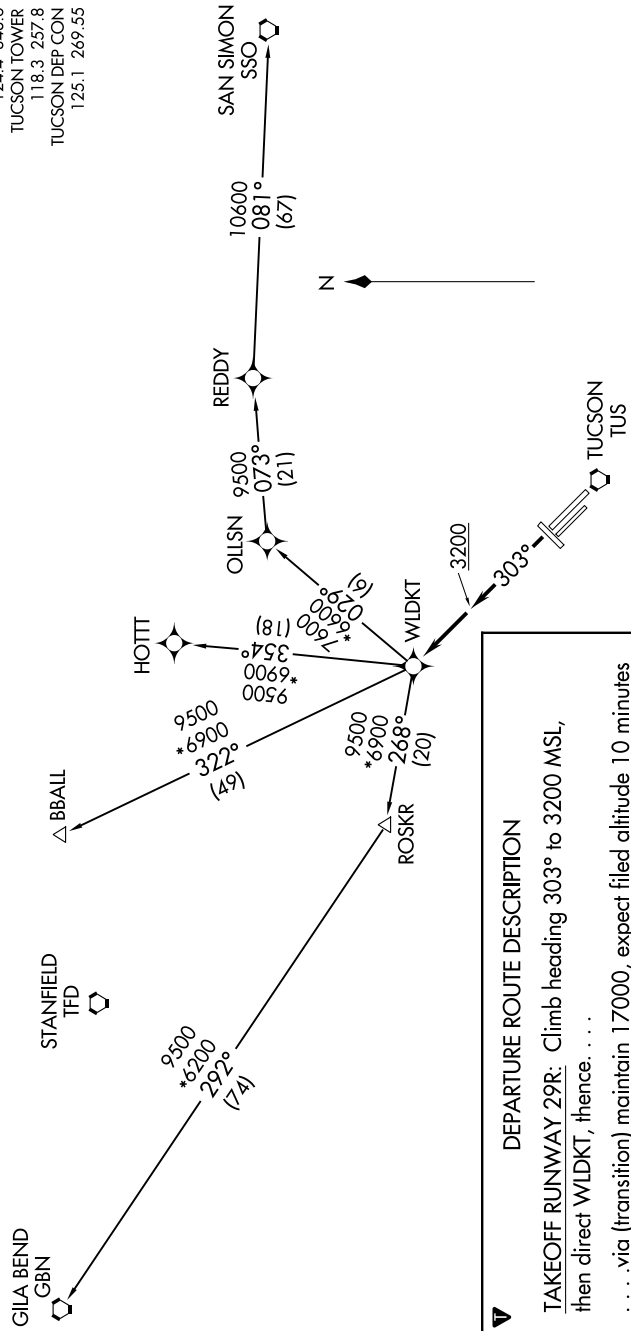
SW-4, 02 DEC 2021 to 30 DEC 2021

ATIS
123.8 279.65
CINC DEL
126.65 326.2
GND CON
124.4 348.6
TUCSON TOWER
118.3 257.8
TUCSON DEPCON
125.1 269.55

TAKEOFF MINIMUMS
Rwys 3, 11L, 11R, 21, 29L: NA - ATC.
Rwy 29R: Standard with minimum climb of 500' per NM to 9500.

WILLIE IWA

TOP ALTITUDE:
17000



NOTE: GPS required.
NOTE: RNAV 1.
NOTE: Chart not to scale.

DEPARTURE ROUTE DESCRIPTION

TAKEOFF RUNWAY 29R: Climb heading 303° to 3200 MSL, then direct WLDKT, thence . . .

. . . via (transition) maintain 17000, expect filed altitude 10 minutes after departure.

BBALL TRANSITION (WLDKT3.BBALL)
GILA BEND TRANSITION (WLDKT3.GBN)
HOTT TRANSITION (WLDKT3.HOTT)
SAN SIMON TRANSITION (WLDKT3.SSO)

SW-4, 02 DEC 2021 to 30 DEC 2021

WLDKT THREE DEPARTURE (RNAV)