

| | | | |
|--|------------------------|-----------------------------|---|
| WAAS CH 77825 W04A | APP CRS 044° | Rwy Idg TDZE Apt Elev | 6001 279 279 |
|--|------------------------|-----------------------------|---|

RNAV (GPS) RWY 4

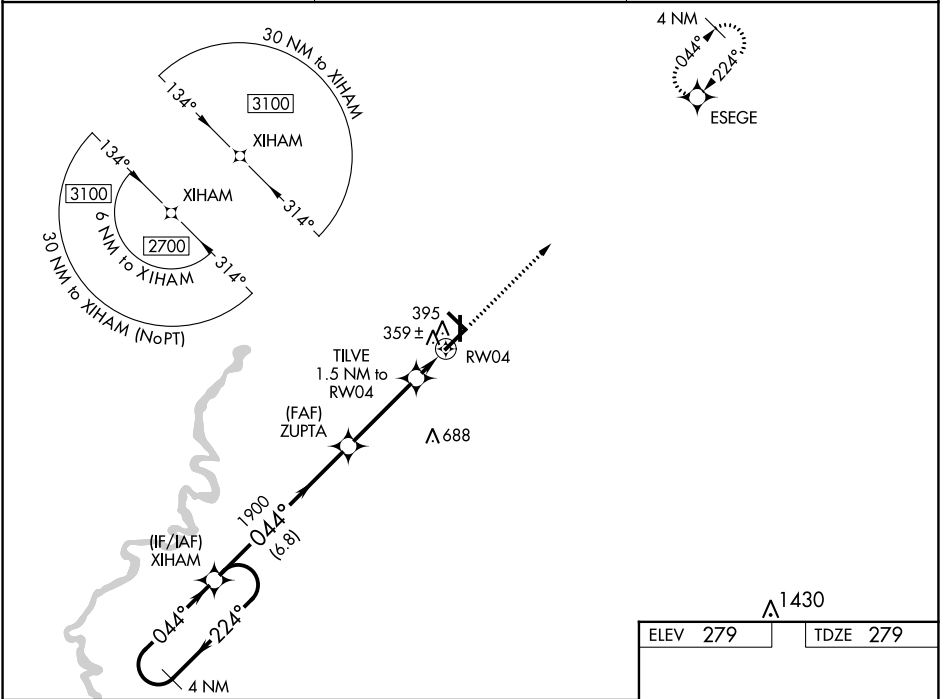
WALNUT RIDGE RGNL (A.R.G)

⚠ Baro-VNAV NA when using Jonesboro altimeter setting. For uncompensated Baro-VNAV systems, LNAV/VNAV NA below -15°C (5°F) or above 42°C (107°F).
⚠ DME/DME RNP-0.3 NA. VDP NA with Jonesboro altimeter setting. When local altimeter setting not received, use Jonesboro altimeter setting and increase LPV and LNAV/VNAV DA to 583 feet, and all MDAs 60 feet; increase Circling Cats C/D visibility 1/4 SM. Inop table does not apply.

MALSF

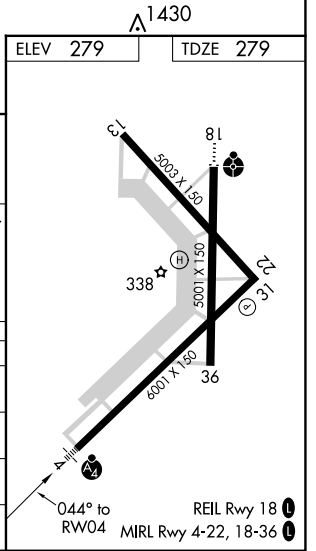
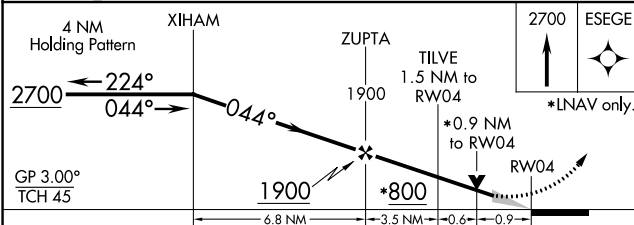
MISSED APPROACH:
Climb to 2700 direct ESEGE and hold.

| | | |
|----------------------------|--|---------------------------------|
| AWOS-3PT 135.925 | MEMPHIS CENTER 120.075 289.4 | UNICOM 122.8 (CTAF) 0 |
|----------------------------|--|---------------------------------|



SC-1, 02 DEC 2021 to 30 DEC 2021

SC-1, 02 DEC 2021 to 30 DEC 2021



| CATEGORY | A | B | C | D |
|--------------|-------|-------------|------------------------------|-------------------------------|
| LPV DA | | 529-3/4 | 250 (300-3/4) | |
| LNAV/VNAV DA | | 529-3/4 | 250 (300-3/4) | |
| LNAV MDA | | 620-1 | 341 (400-1) | |
| CIRCLING | 840-1 | 561 (600-1) | 840-1 1/2 561 (600-1 1/2) | 1000-2 1/4 721 (800-2 1/4) |