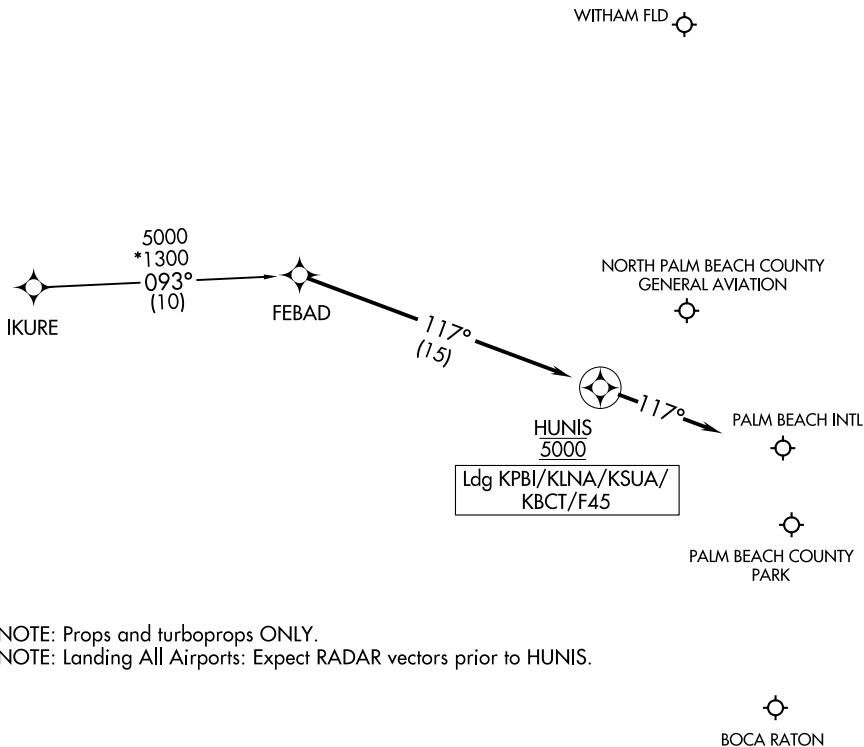


FEBAD ONE ARRIVAL (RNAV)

WEST PALM BEACH, FLORIDA

PALM BEACH APP CON
 127.35 317.4
 FBI D-ATIS
 123.75
 SUA ATIS
 134.475

RNAV 1 - DME/DME/IRU or GPS.
 RADAR required.



NOTE: Props and turboprops ONLY.
 NOTE: Landing All Airports: Expect RADAR vectors prior to HUNIS.

NOTE: Chart not to scale.

ARRIVAL ROUTE DESCRIPTION

IKURE TRANSITION (IKURE.FEBAD1)

LANDING ALL AIRPORTS: From FEBAD on track 117° to cross HUNIS at 5000, then on track 117°. Expect RADAR vectors to final approach course.